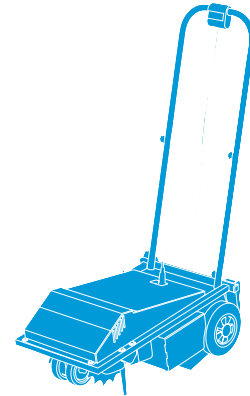


HSS Hire



Lawn Aerator

Battery operated lawn aerator.
Brings professional lawn care
techniques to your lawn.



Code 62324

The two batteries supplied are both 12V / 26AH Sealed Lead Acid [SLA] type. To avoid abuse and ensure a long trouble free life, follow these instructions carefully:

From a full charge you will find that the forward speed of the Lawn aerator will drop after a few minutes then continue at a lower speed for an hour or so then drop again until it is reluctant to move forward at all. At this point **STOP**. The batteries will not be fully discharged but they need recharging.

THE BATTERIES SHOULD NEVER BE ALLOWED TO FULLY DISCHARGE. TO DO SO WILL EFFECTIVELY DESTROY THEM.

The batteries should always be used and charged as pairs. If you are using additional sets of batteries we suggest you use a felt pen to mark up and identify separate sets of batteries.

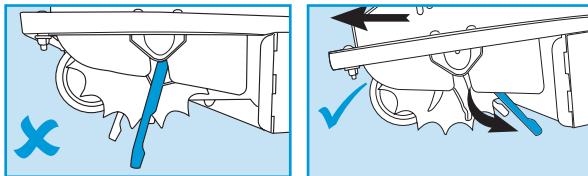
The batteries may be safely left permanently on trickle charge but if you find this practice environmentally unfriendly or costly then remember to recharge as necessary.

The batteries should be left protected in the Lawn aerator when not in use and when being stored to prevent accidental dropping, shorting out or damage. Recharging will take up to 4 hours. With care the batteries will give many hours of use.

STORAGE AND TRANSPORT

Wherever possible the machine should be stored and transported on end like this. So preventing strain and damage to the tines. **Never allow the machine to be transported, stored or dragged on its tines like this. This will strain and break the tines and holders.**

To prevent just push the machine forward onto its wheels so that the tines fall back.



EQUIPMENT CARE

Never push the equipment beyond its design limits. If it will not do what you want with reasonable ease and speed, assume you have the wrong tool for the job. Contact your local HSS Hire for advice.

Keep the equipment clean, you will find this less of a chore if you clean it regularly, rather than wait until the end of the hire period.

When not in use, **store the equipment somewhere clean, dry and safe** from thieves and unauthorised users.

This machine is effectively self cleaning as the nylon working parts and tines naturally resist anything (mud) sticking to them, once dried on any mud quickly falls off. Should you need to clean **DO NOT** clean with a pressure washer use an unpressurised garden hose with a cloth.

FINISHING OFF

Switch the unit OFF and wait for moving parts to stop.

Fold the machine up to gain vertical shape.

Collect all parts together ready for return, to your local HSS Hire.



... have you been trained

The law requires that personnel using this type of equipment must be competent and qualified to do so. Training is available at HSS Training Solutions
0845 766 7799

...any comments?

If you have any suggestions to enable us to improve the information within this guide please e-mail your comments or write to the Safety Guide Manager at the address below
e-mail: safety@hss.com

©HSS Hire Service Group Ltd 2010 No. 312/01

Group Office: 25 Willow Lane, Mitcham, Surrey CR4 4TS

Web Site: <http://www.hss.com>

GENERAL SAFETY

For advice on the safety and suitability of this equipment contact your local HSS Hire.


There is a serious risk of personal injury if you do not follow all instructions laid down in this guide.

The hirer has a responsibility to ensure that all necessary risk assessments have been completed prior to the use of this equipment.

This equipment should only be used by an operator who has been deemed competent to do so by his/her employer.

This equipment is designed to be used by an able bodied, competent adult who has read and understood these instructions. Anyone with either a temporary or permanent disability should seek expert advice before using it.

Keep children, animals and bystanders away from the work area. Cordon off a NO GO area using cones and either barriers or tape, available for hire from your local HSS Hire.

 Never use this equipment if you are ill, feeling tired, or under the influence of alcohol or drugs.

 Wear practical, protective clothing, gloves, and footwear.

Avoid loose garments and jewellery that could catch in moving parts, tie back long hair.

Do not work near flammable gases or liquids, petrol or paint thinner fumes for example. Keep combustible materials at a safe distance – at least 5m.

Make sure you know how to switch this equipment OFF before you switch it ON in case you get into difficulty.

Make sure you know how to operate this equipment safely and are aware of its limitations before you use it.

Check the equipment before use. If it shows signs of damage or excessive wear, return your local HSS Hire.

Make sure that everyone is warned of what you are doing.

When not in operation disconnect the switch cable from the socket on the top of the cover panel to prevent accidental and or unintended start-up.

Always operate from behind the handle for maximum safety.

Always check for underground electrical cables.

Always ensure that the lawn is free of surface twigs, stones, leaves and debris before operating.

Do not transport the Lawn aerator on its tines or drag it against the tines. This will damage the tines.

Do not operate the Lawn aerator on any surface other than lawn.

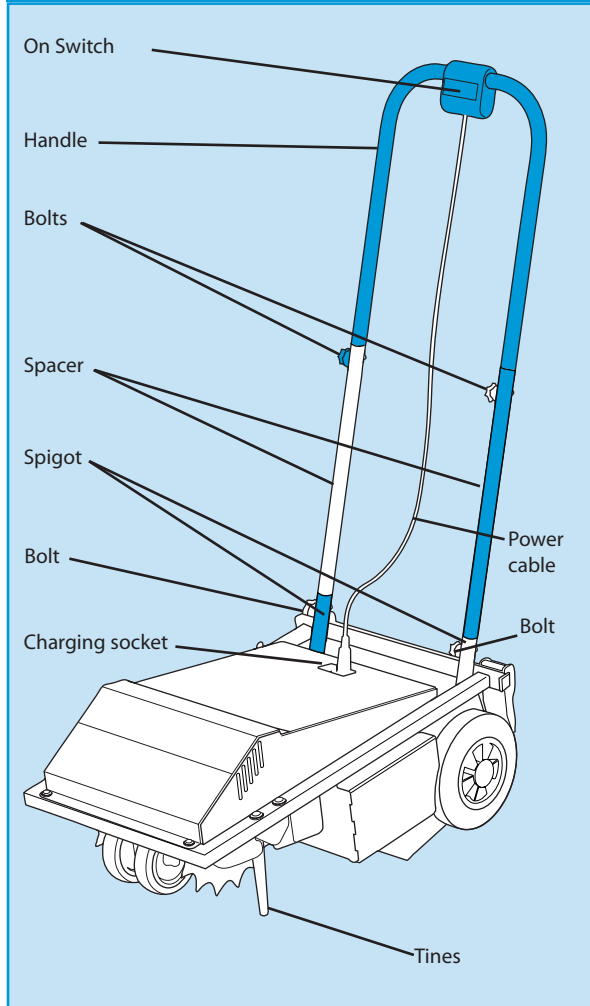
Do not use the core scoop on rough or un-mown lawns.

Do not attempt to lift or carry the Lawn aerator alone. Two people are needed to lift the Lawn aerator.

Do not use the Lawn aerator battery charger outdoors.

The battery charger must always be used undercover.

IDENTIFIER



GETTING STARTED

Never use the Lawn aerator until you have fully read and understood this User Guide and the machine has been properly set up using the information it contains.

We recommend that the hollow tines are used at each end of the growing season (from late Autumn through to late Spring) leaving a gap of a month or so between treatments, it is difficult to over aerate a lawn but two or three times per year should suffice.

We recommend that you leave the cores on the lawn and allow nature to break them down and re-absorb them as a top dressing. To do this you will need to remove the scoop by unscrewing the three screws at the back of the machine.

The scoop is primarily intended for summer use when it might not be desirable to leave the cores on the lawn

GROUND CONDITIONS

Firstly ensure the lawn is free of surface twigs, leaves and debris that might foul the mechanism and blow the fuse.

It is recommended that you mow the lawn before using the Lawn aerator.

The best time to use the Lawn aerator is when the ground is firm and damp but not soggy, 24 hours after a couple of day's rain is ideal.

Surface conditions make a huge difference to the running time and area covered.

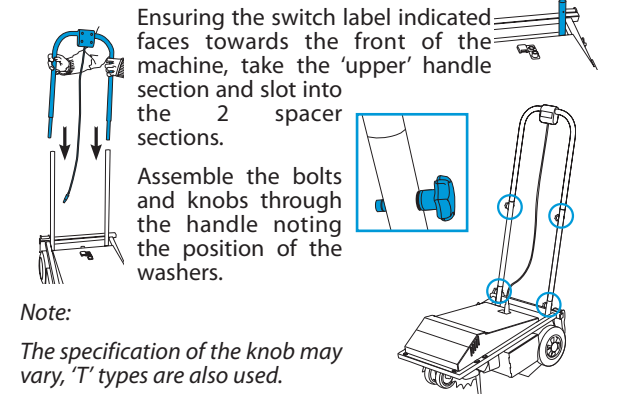
On a dry lawn up to 1 1/2 hours is possible but the cores will be shorter.

On an overly wet lawn you might only get 35-45 minutes and 200 square metres coverage before the batteries are discharged and you end up with a muddy machine.

In ideal conditions the machine should run for approximately an hour and cover 300 square metres or so. Use of the scoop will further lower the above running times. If used empty as necessary.

THE HANDLES

Take a handle 'spacer' tube and slot into a spigot at the rear of the lawn aerator taking care to line up the holes. Repeat for the opposite side.



BASIC TECHNIQUES

To operate after the above steps have been followed, simply push the ON switch and walk at a steady pace. Occasionally you will hear the Lawn aerator make a sharp bang. This is normal, it indicates that one of the tines has met soft ground or re-entered a previously made hole or slit. The sound you're hearing is the 'bump stops' hitting the axle.

CHARGING THE BATTERIES

Ensure the switch cable is disconnected from the switch socket. Plug the charger into the charging socket on the lid. Plug the charger into a switched mains socket. Switch on mains power. The LED signal lamp on the charger will initially be red. When the lamp changes to green the batteries are fully charged. When this point has been reached the batteries will continue to be trickle charged.