

## GETTING STARTED

If a side handle is supplied, it **MUST** be fitted and used, if the bit jams during drilling the side handle will help restrain the machine. **Without the handle fitted you risk breaking your wrist.**

To fit the side handle, simply slide the handle assembly over the tool holder and onto the Drill's collar, then secure by twisting the grip clockwise.

If the depth stop is to be used, this may be adjusted by releasing the wing nut on the handle or opening the clamp by simply pressing the red button.

Fit the Drill with the right bit for the job.

### Drill Bits

**TCT drills.** General purpose masonry drill bits are available with straight-shank or SDS fitting.

**HSS (high speed steel).** Used mainly for drilling holes in steel but also used for wood and plastics.

**Flat (spade) bits.** Designed for use in timber products.

To fit an SDS drill bit, push it into the tool holder, rotate slightly until you feel it engage and then push it firmly home. A click will be heard from the tool holder. To remove, pull back the outer sleeve of the tool holder and withdraw the bit.

If drilling into masonry, set the Drill to 'hammer', the hammer action is turned on and off with a rotary selector switch.

If drilling into timber, metal or plastic turn the selector to drill only.

## BASIC TECHNIQUES

Connect a charged battery to the unit (see "Electrical Safety" and illustration).

To start the Drill, squeeze in the ON/OFF trigger, to stop simply release the trigger.

The unit is fitted with a variable speed trigger, the further in the trigger is squeezed, the faster the Drill will run.

Hold the Drill in both hands and adopt a stable stance that gives a good view of the work while keeping you clear of the bit.

Do not work in areas where you are forced to stand on loose debris or on a slippery uneven surface.

Start drilling slowly and carefully, then, once the hole is established, concentrate on drilling in a straight line – with the Drill at right angles to the surface, where appropriate.

Apply just enough pressure to achieve a steady drilling rate – too much or too little pressure will overheat and/or blunt the drill bit and could damage the electric motor.

When drilling into hard material such as masonry, withdraw the bit from time to time, keeping the Drill running, in order to cool the bit and the Drill's motor. This will also clear waste from the hole.

When drilling large diameter holes with TCT or HSS twist bits, drill a small pilot hole first, then drill again with a larger bit, until the correct size is achieved.

If using a flat bit for timber, do not use a pilot as the flat bit relies on its own pilot tip to keep the bit central.

## EQUIPMENT CARE

Never push the equipment beyond its design limits. If it will not do what you want with reasonable ease and speed, assume you have the wrong tool for the job. Contact your local HSS Hire Shop for advice.

Never let the drill bit or motor over-heat. Stop work at frequent intervals and run the drill for a minute or so, just holding it in your hands. The air drawn in and around it will cool everything down and prevent damage.

Regularly check that the air vents in the drill body are clear. If these become blocked with dust, clean them out using a soft brush before continuing, taking care not to push dirt into the drill body.

Never fit a drill bit larger than the recommended maximum drilling capacity of the cordless drill. If in doubt, contact your local HSS Hire shop for advice.

Keep the equipment clean - you will find this less of a chore if you clean it regularly, rather than wait until the end of the hire period.

When not in use, store the equipment somewhere clean, dry and safe from thieves.

## FINISHING OFF

Disconnect the battery and place in the carry case with the charger. Remove any fitted drill bit and give the unit a final clean up ready for return, to your local HSS Hire Shop.



### ...any comments?

If you have any suggestions to enable us to improve the information within this guide please fax your comments or write to the Product Manager at the address below  
Fax: 020 8687 5001

©HSS Hire Service Group Plc 2003 No. 524/02

Group Office: 25 Willow Lane, Mitcham, Surrey CR4 4TS

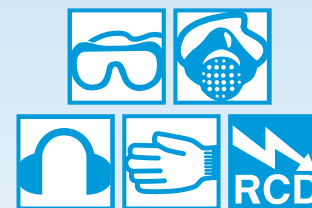
Web Site: <http://www.hss.com>

# HSS Hire Shops



# Cordless Rotary Hammer Drills

Designed for use where there is no power supply or a mains powered drills power cable would get in the way.



## GENERAL SAFETY

**For advice** on the safety and suitability of this equipment **contact your local HSS Hire Shop.**


**There is a serious risk of personal injury** if you do not **follow all instructions** laid down in this guide.


The hirer has a responsibility to **ensure that all necessary risk assessments have been completed** prior to the use of this equipment.


**This equipment should only be used by an operator who has been deemed competent to do so by his/her employer.**

**This equipment should be used by an able bodied, competent adult** who has read and understood these instructions. Anyone with either a temporary or permanent disability, should seek expert advice before using it.

**Keep children, animals and bystanders away from the work area.** Cordon off a NO GO area using either cones, barriers or tape, available for hire from your local HSS Hire Shop.

 **Never use this equipment if you are ill, feeling tired, or under the influence of alcohol or drugs.**

 **Safety goggles MUST be worn by everyone in the work area.**

 **This equipment generates potentially harmful noise levels.** To comply with health and safety at work regulations, **ear defenders must be worn** by everyone in the vicinity.

 **Some materials when drilled contain substances which, when inhaled, can be harmful to health.** A suitable mask must be worn when using this equipment. Respiratory protective equipment is available for hire, contact your local HSS Hire Shop for details.

 **Wear practical, protective clothing, gloves and footwear.** Avoid loose garments and jewellery that could catch in moving parts, tie back long hair.

**Always switch OFF and unplug the charger when not in use.**

**Take special care when changing drill bits** – they are sharp and become hot when in use.

**Always ensure that the ON/OFF switch is locked in the OFF position** when the Drill is not in use. **The ON/OFF switch is locked off when the direction selector is moved to the middle position.** Remove the battery and store it carefully in the carry case provided. Never leave the Drill unattended.

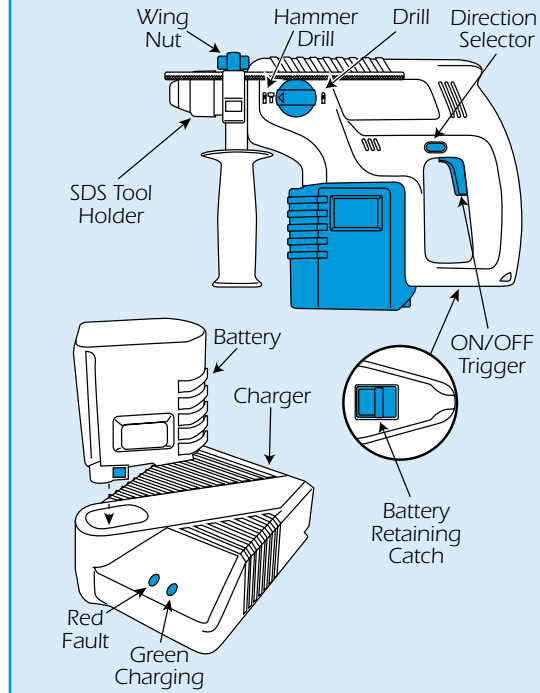
**To safeguard against the risk of fire, never allow the battery terminals to come in contact with metal objects.**

**Ensure the work area is well lit and ventilated,** if in doubt, ask about lighting and ventilation equipment at your local HSS Hire Shop.

**Only change the direction of rotation when the machine is stopped.**

**Take special care when drilling into walls or floors,** they may contain hidden pipe work, reinforcing bars or electrical cables. If in doubt, **hire a Cable Avoiding Tool or metal locator, to determine the exact position of such hazards.**

## 24V Version 1



**Watch your footing. Take special care if working other than on firm, level ground.** Above ground level, work from a stable, purpose-made work platform such as a step-up or trestle.

**Do not work near flammable gases or liquids,** petrol or paint thinner fumes for example. **Keep combustible materials at a safe distance** - at least 5m.

**Make sure you know how to switch this machine OFF before you switch it ON** in case you get into difficulty.

**Make sure that everyone is warned of what you are doing.**

**Check the condition of the equipment before use.** If it shows signs of damage or excessive wear, return it to your local HSS Hire Shop.

## ELECTRICAL SAFETY

**The battery charger is designed to plug straight into a standard 230V 13-amp power socket.**

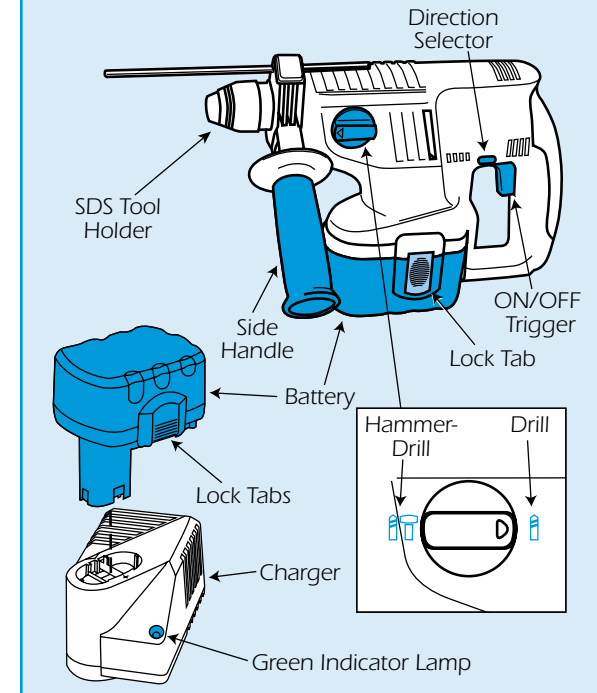
**Some 24V models have a level of charge indicator built into the battery,** simply push the ON button and observe the reading scale.

**To remove the battery from the Drill (Version 2), press the lock tabs in with finger and thumb and pull the battery clear.**

**With version 1, slide the battery retaining catch backwards while supporting the battery, the battery will simply drop.**

**Warning** – Never release this catch without supporting the battery, as it may fall and cause injury.

## 24V Version 2



**To recharge, insert the battery pack into the charger,** it will only go in one way. Then plug the charger into a suitable power supply and **switch the power ON,** recharging is fully automatic.

**The green indicator lamp will blink while the battery is being charged** and will remain on once charging is complete.

The charger will **recharge the battery in approximately 1 hour (Version 2) or half an hour (Version 1).**

**The version 1 charger has a red fault lamp,** which may illuminate if the battery is too hot/cold to safely charge, in this case allow the battery temperature to stabilise and try again. If the fault light persists, contact your local HSS Hire shop for advice.

If an **extension lead** is used for the charger it **should be fully unwound and loosely coiled,** away from the equipment. Never run leads through water, over sharp edges or where they could trip someone.

**Using the charger in very damp or wet conditions can be dangerous.**

 **To reduce the risk of electric shock, use a suitable RCD (Residual Current-Operated Device)** available from your local HSS Hire Shop, or power the charger from a mains circuit with a built-in RCD.

**If the Drill fails, or if the chargers power supply cable or plug gets damaged, return it.** Never try to repair it yourself.

**Never carry or pull the charger by its power supply cable.**