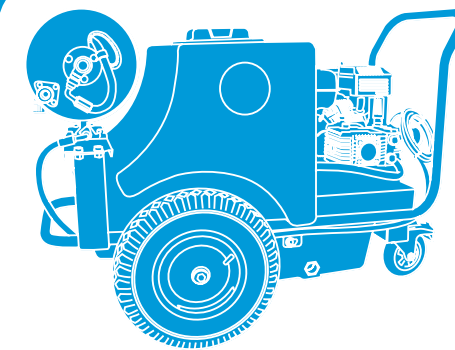


HSS Hire



Mini Bowser

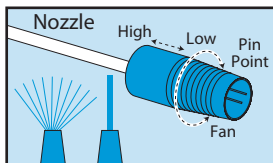
Petrol driven powerful pressure washer and bowser which is ideal for use where there is no power and for areas difficult to reach.



Code 6036

Set the engines throttle control to 'fast', squeeze the trigger to flush any air from the system.

The unit is now ready to begin work.



The spray pressure can be adjusted at the spray lance. For low pressure slide the nozzle forward and for high pressure slide the nozzle back.

The pressure can also be adjusted at the pump, to increase pressure turn the pressure control clockwise, to decrease, turn anti-clockwise.

The spray pattern can be adjusted to either a fan or pinpoint. To set to fan, turn the nozzle anti-clockwise to set pinpoint, turn clockwise.

If a detergent is to be sprayed, reduce the spray pressure at the nozzle. Triggering the lance will now draw the chemical into the system automatically. You can alter the percentage mix of detergent and water by turning the chemical inlet valve anti-clockwise to increase and clockwise to decrease.

If you then wish to spray without detergent, push the nozzle back to high pressure. The chemicals will continue for a short while as the residue is cleared.

EQUIPMENT CARE

Never push the equipment beyond its design limits. If it will not do what you want with reasonable ease and speed, assume you have the wrong tool for the job. Contact your local HSS Hire for advice.

Keep the equipment clean – you will find this less of a chore if you clean it regularly, rather than wait until the end of the hire period.

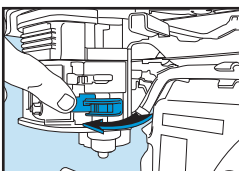
Handle hoses with care. Never run them over sharp edges or anywhere else that exposes them to the risk of damage.

Regularly check the fuel level and top up as required using the correct fuel: lead-free petrol.

Check the engine oil level daily. Let the engine cool, stand it on level ground, withdraw the dipstick and wipe clean. Now, replace the dipstick, withdraw it a second time and verify that the oil level is between min and max. Top up as necessary.

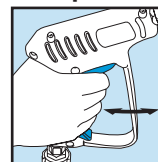
During transportation ensure fuel tap is turned to the OFF position.

When not in use, **store the equipment somewhere clean, dry and safe** from thieves. **And where it will be protected from frost at all times.**

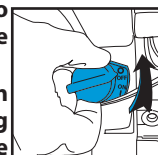


FINISHING OFF

To switch off turn the engine button to the OFF position and wait for the engine to stop, then turn off the fuel tap.



Release any pressure in hose by squeezing trigger, shut off the water supply and disconnect hoses from machine simply turn anti-clockwise trigger the lance to drain any remaining water then refit the supply hose to the pump.



During cold weather any remaining water may freeze and failure to drain the system may damage the pump.

Disconnect the pressure hose, drain out any water it may contain and **coil it neatly.**

You should now empty the bowser of any remaining water **Clean the unit as thoroughly as possible, ready for return** to you local HSS Hire.



... have you been trained

The law requires that personnel using this type of equipment must be competent and qualified to do so. Training is available at HSS Training Solutions 0845 766 7799

...any comments?

If you have any suggestions to enable us to improve the information within this guide please e-mail your comments or write to the Safety Guide Manager at the address below e-mail: safety@hss.com

©HSS Hire Service Group Ltd 2010 No. 316/01

Group Office: 25 Willow Lane, Mitcham, Surrey CR4 4TS

Web Site: <http://www.hss.com>

GENERAL SAFETY

For advice on the safety and suitability of this equipment contact your local HSS Hire.

There is a serious risk of personal injury if you do not follow all instructions laid down in this guide.

The hirer has a responsibility to ensure that all necessary risk assessments have been completed prior to the use of this equipment.

This equipment should only be used by an operator who has been deemed competent to do so by his/her employer.

This equipment should be used by an able bodied, competent adult who has read and understood these instructions. Anyone with either a temporary or permanent disability, should seek expert advice before using it.

Keep children, animals and bystanders away from the work area. Cordon off a NO GO area using cones and either barriers or tape, available for hire from your local HSS Hire.

Never use this equipment if you are ill, feeling tired, or under the influence of alcohol or drugs.

Safety goggles MUST be worn by everyone in the work area.

This equipment generates potentially harmful noise levels. To comply with health and safety at work regulations, ear defenders must be worn by everyone in the vicinity.

Wear practical, protective waterproof clothing, gloves and footwear. Avoid loose garments and jewellery that could catch in moving parts, tie back long hair. Take all necessary precautions to protect yourself and others against the possibility of contracting infectious diseases in your work environment.

Ensure the work area is well lit and ventilated, if in doubt, ask about lighting and ventilation equipment at your local HSS Hire.

Watch your footing. Take special care if working other than on firm, level ground.

Pressure washing equipment can cause serious injury, so take care. Never point the spray lance at anyone and always engage the trigger safety lock when not actually washing.

Never direct the spray at or near anything electrical.

Take care where you lay hoses. Avoid running them where there is a risk of someone tripping over them.

Always switch OFF the equipment when not in use.

Engines, especially the exhausts, get very hot so switch OFF and allow to cool before touching them.

Keep flammable materials well away from engine and exhaust.

If working above ground level, work from a suitable, stable platform, an access tower for example. Never work from ladders or steps.

Do not run the pump, with the lance trigger in the closed position, for more than 5 minutes. The pump needs a good flow of water to keep it cool. Without water movement, the pump will overheat and expensive damage will be caused.

Check the condition of the equipment before use paying special attention to tap connections, filler caps/lids and tyres. If it shows signs of damage or excessive wear, return it to your local HSS Hire.

Ensure the tyres are in good condition and correctly inflated. (35 psi)

NEVER drink the water from a water bowser.

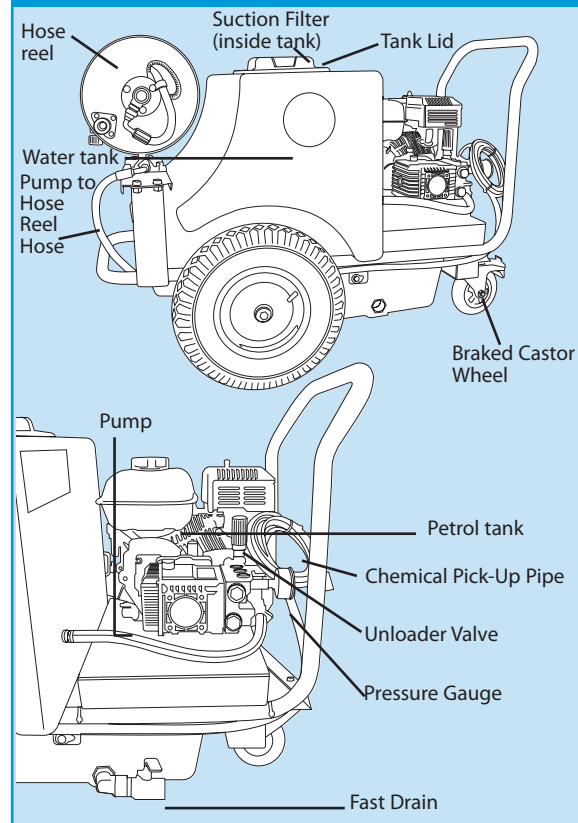
SAFETY WARNING

NEVER operate petrol engines indoors or in a confined space. The exhaust contains gases that can Kill.

SAFETY WARNING

NEVER refuel while the engine is hot or running. NEVER smoke or allow naked lights into the area while refuelling. NEVER inhale fuel vapour. ALWAYS mop up spillages as quickly as possible, and change your clothes if you get fuel on yourself. ALWAYS store fuel in a purpose-made sealed container, in a cool, safe place well away from the work area.

IDENTIFIER



GETTING STARTED

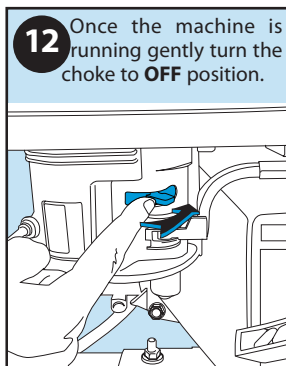
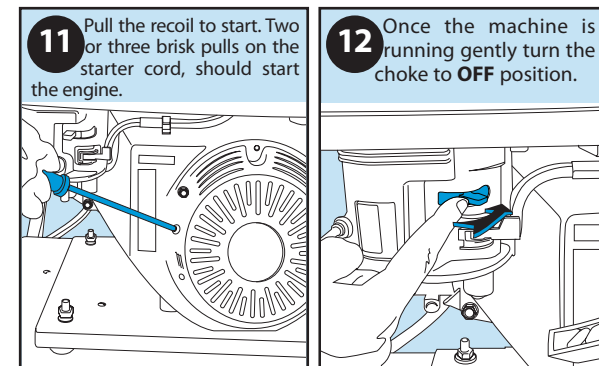
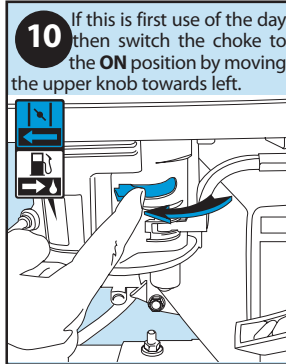
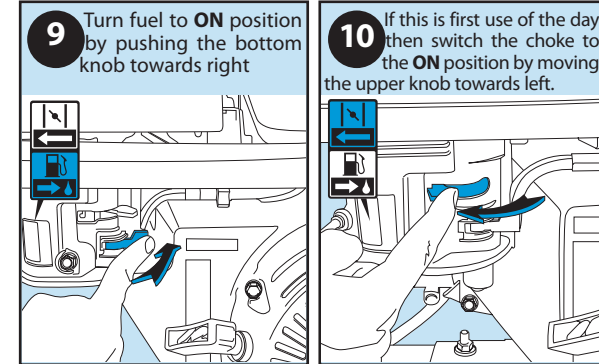
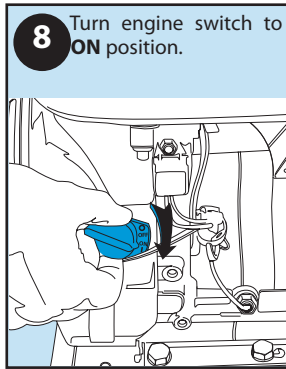
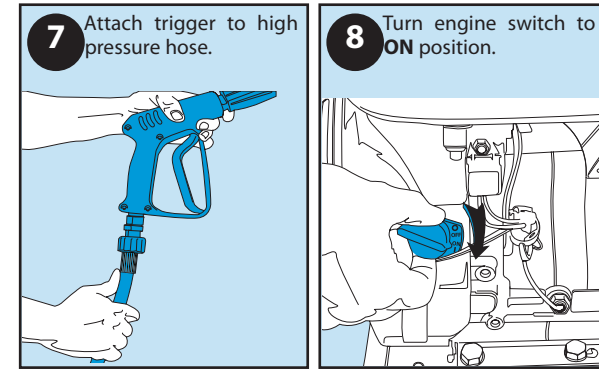
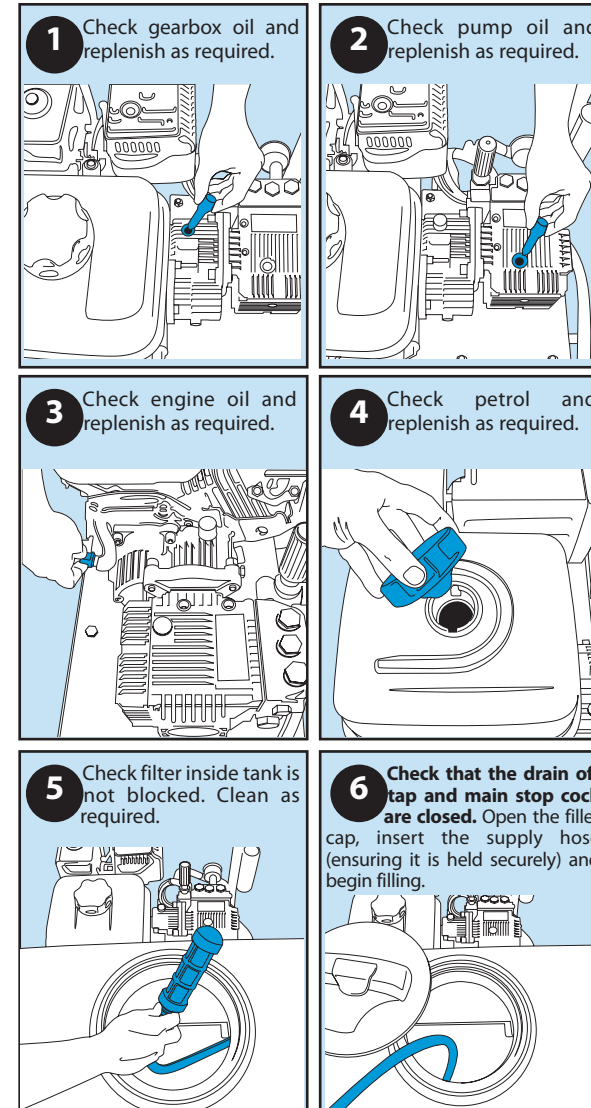
Never use the Bowser until you have fully read and understood this User Guide and the machine has been properly set up using the information it contains.

You may only fill the pressure washer bowser with clean fresh drinking water, if the water becomes contaminated, contact your local HSS Hire for advise.

Stand the bowser on a firm, level surface strong enough to bear its weight as far from the work area as the pressure hose will allow.

Do not park on slopes, soft ground or where there is a risk of subsidence.

PRE-OPERATION PROCEDURE



Once engine is started it is important to flush out the air in the system. Do it by squeezing the lance's trigger as soon as the engine is running, until water flows freely from the nozzle.

BASIC TECHNIQUES

The engine MUST NOT be run without a water supply connected, as the pump uses the water to keep it cool and will quickly overheat if dry.