

CHIMNEY CLEARING

When the chimney has been swept, try to keep the dust sheet in place to stop soot escaping into the room.

Use a heavy duty vacuum to clear the soot by first slipping the vac's tube under the dust sheet. If possible have the vacuum in position and switched ON from the very beginning.

EQUIPMENT CARE

Never push the equipment beyond its design limits. If it will not do what you want with reasonable ease, assume you have the wrong tool for the job. Ask at your local HSS Hire Shop for advice.

Keep the equipment clean. You will find this less of a chore if you clean up regularly, rather than wait until the end of the hire period.

When not in use, store the equipment somewhere clean, dry, and safe from thieves.

FINISHING OFF

Pull/twist the rods out of the drain/chimney, unscrewing each section (and head) when clear. Do remember, though - **never twist anti-clockwise** or you will lose any rods still in situ.

Thoroughly clean up the equipment ready for return to your local HSS hire Shop. Failure to clean this type of equipment properly is not only unhealthy but will render you liable to a heavy cleaning charge.

...any comments?

If you have any suggestions which would improve the information within this guide please fax your comments or write to the Product Manager at the address below

Fax: 0181-687 5001



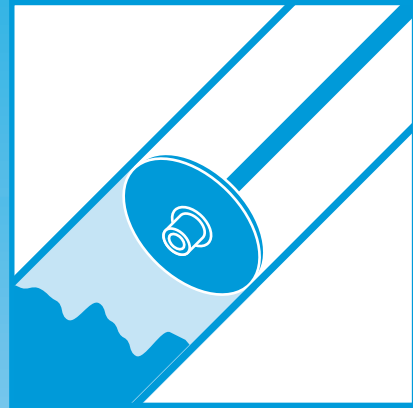
©HSS Hire Service Group Plc 1998 No. 747/01

Group Office: 25 Willow Lane, Mitcham, Surrey CR4 4TS

Web Site: <http://www.hss.co.uk>

Operating & Safety Guide 747

HSS Hire Shops



Drain Rods And Sweeps Brush

The traditional choice for clearing large, straight soil pipe runs, and cleaning chimneys.



Code 51410/58910

GENERAL SAFETY

For advice on the safety and suitability of this equipment contact your local HSS Hire Shop.

This equipment has been designed to be used by an able bodied adult. If you suffer from either a temporary or permanent disability, you must seek expert advice before using this equipment.

Keep children, animals and bystanders away from the work area.



Never use this equipment if you are ill, feeling tired, or under the influence of alcohol or drugs.

This equipment should only be used by a competent person who has read and understood these instructions.



Safety Goggles MUST be worn by everyone in the work area.



When cleaning chimneys and flues the dust created may contain substances that, when inhaled, can be harmful to health. A suitable mask must be worn when using this equipment.



Wear practical, protective clothing, rubber gloves and footwear. Avoid loose garments and jewellery that could catch in moving parts, tie back long hair.

Ensure the work area is well lit and ventilated.

Check the condition of the equipment before use.

If it shows signs of damage or excessive wear, return it to your local HSS Hire Shop.

Take special care where chemical drain cleaners have already been tried. Most are toxic and may cause burns. If you get any on yourself, change affected clothing and wash off with plenty of clean water.

GETTING STARTED

If using DRAIN RODS...

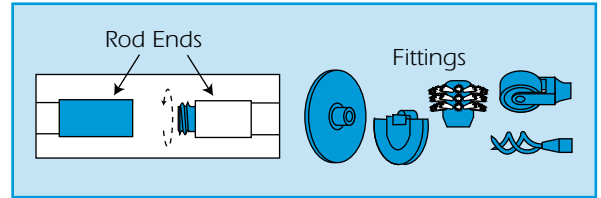
Unpack the rods and fittings from the carry case. Screw two or three rods together, taking care not to cross the threads, then fit a suitable head.

Rods come with a selection of heads. Choose the right one for the job. In general, use a drill to break through blockages, then a brush or cutter to clean the pipe walls.

If cleaning a CHIMNEY...

Cover the opening of the fire place with a good quality dust sheet (you may also need to cover any other fire place that is linked to the same run). Cut a hole in the sheet as near central to the opening as possible and insert the first rod.

Fit the 16" sweeps brush to the end of the first rod and re-seal the sheet to the fireplace to protect the room and yourself from falling soot.

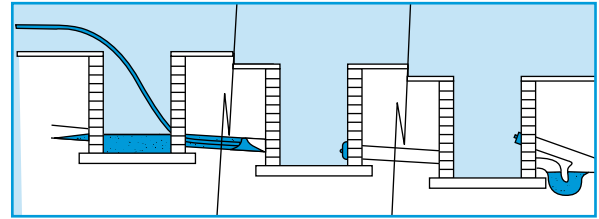


WHICHEVER YOU ARE USING...

Feed the rods into the pipe/ chimney, screwing on extra lengths as required, until the head strikes the blockage or exits the chimney stack. Now push and twist (clockwise) until the head breaks through.

Be sure never to twist drain rods anti-clockwise, though. The joints will unscrew leaving sections trapped in the pipe / chimney.

DRAIN BASICS



Using manhole keys, lift the drain's inspection chamber cover, taking care not to damage it or the surrounding frame.

Empty the chamber, either by bailing or using a suitable pump to take the waste to the next clear chamber below the blockage.

Seal the second chamber's outlet with a drain bung to stop debris being swept through to cause a blockage elsewhere.

Clear the obstruction, scooping out any debris flushed into the second chamber when the drain cleaner's head breaks through.

Remove the bung from the second chamber and generally clean the drain by using a suitable head and / or flushing through with plenty of water.

If there is no inspection chamber below the blockage, it means waste passes directly into the sewer via a trap (basically a larger version of the one on a sink).

In this case. It may be possible to clean both the trap and pipe beyond by rodding through the rodding eye above the main outlet – it should have screw-on or lift off cover.