

BASIC TECHNIQUES

Always begin by spraying a test pattern on old newspaper or the like and adjust the spray-gun's controls as required.

Note that the gun has a two-stage trigger. To spray you must fully depress the trigger. Depressing it half-way delivers air only, allowing you to blow any dust off the surface before spraying.

To change the spray pattern's shape click the air-cap to the appropriate position. Use the vertical pattern if spraying from side to side, the horizontal pattern if working up and down and the round pattern if spraying small areas.

To change the spray pattern's size and density, tighten or loosen the air-cap. Tightening it produces a coarser spray but a bigger pattern. Loosening it gives a finer spray and a smaller pattern.

To fine-tune the spray pattern, adjust the air and/or fluid controls. The higher the air-to-fluid ratio, the better the atomisation and the finer the finish. Reducing the ratio produces special effects.

Once satisfied with the pattern, paint the area in a series of horizontal or vertical strips, each overlapping its predecessor by about 50%.

For the best results, move the gun at an even pace, keeping it parallel to the surface being painted and about 150mm to 200mm away from it.

To ensure even coverage at the beginning and end of each strip, start the gun moving before you trigger it and keep it moving after the trigger has been released.

To spray edges and corners, simply run the gun along the edge/corner, keeping this in the centre of the spray pattern.

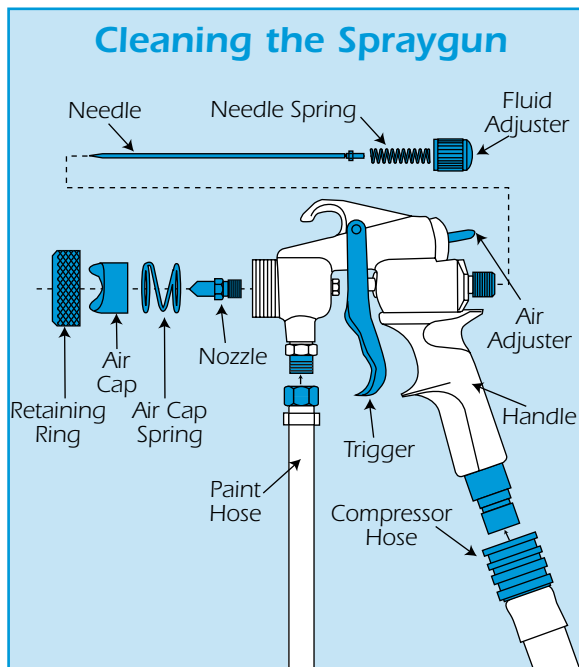
For most jobs, hold the gun at right-angles to the surface being painted. In windy conditions, though, angle the gun to spray into the wind and tackle the area in vertical strips.

Trouble-Shooting

Always check you have been given the correct needle and nozzle. If in doubt contact your local HSS Hire Shop.

Correctly set, the spray-gun should produce a uniform, symmetrical spray pattern. If the pattern is misshapen, rotate the air-cap and try again.

If the defect rotates with the cap, remove the air-cap assembly and clean it. If that doesn't work, the nozzle may be defective so return the equipment to your local HSS Hire Shop.



EQUIPMENT CARE

If using the Portable Turbine model... Never turn the spray gun upside down or on its side when spraying.

DO NOT REMOVE THE PAINT CUP while the machine is running.

WHATEVER you are using... Never push the equipment beyond its design limits. If it will not do what you want with reasonable ease, assume you have the wrong tool for the job. Contact your local HSS Hire Shop for advice.

Handle the equipment with care. Avoid dropping it, knocking it, or otherwise exposing it to damage.

Do not use the unit continuously. Switch off and leave it to cool for about ten minutes in every hour.

Clean the turbine's air-filters before starting and at regular intervals in use. Having switched off the turbine, simply lift out the filter pads and slap them to remove trapped dust before refitting them.

Never spray at or near the machine. The turbine's filters will become clogged, seriously damaging the unit. Keep the unit about 3 metres from the spray area.

If the spray tip gets blocked, switch OFF and depressurize the system, then unscrew the nozzle and wash it thoroughly in the appropriate solvent.

Never attempt to clear blocked nozzles using a pin or other metal objects.

Never expose the equipment to dangerous and/or corrosive chemicals.

Keep the equipment clean. Even if you are taking only a short break, clean it out as thoroughly as if you were returning it at the end of the hire period.

Damaged hoses are dangerous so handle them with care and coil them neatly, without kinks, for storage.

When not in use, store the equipment somewhere clean, dry and safe from thieves.

FINISHING OFF

If using the Portable Turbine model... Turn OFF the turbine and disconnect the small air hose from the top of the paint-cup to release the internal pressure.

Empty the paint-cup and rinse out with the appropriate solvent.

If using the Large Volume model... Turn OFF both the turbine and compressor, then depressurize the pressure pot by both disconnecting the red air hose and opening the pressure safety valve.

WHATEVER you are using... Reset the system for spraying, this time using an appropriate solvent rather than paint.

With the air adjuster turned down, flush the system through by spraying the solvent into a suitable container, repeating the process until the solvent emerges clean.

That done, clean the outside of the unit and spray-gun using a cloth dipped in the appropriate solvent.

If using cellulose thinners or white-spirit, always work in a well ventilated area, away from possible ignition sources. And DO NOT SMOKE.

Finally, disconnect all air-hoses and carefully coil them ready for return.

...any comments?

If you have any suggestions which would improve the information within this guide please fax your comments or write to the Product Manager at the address below
Fax: 0181-687 5001



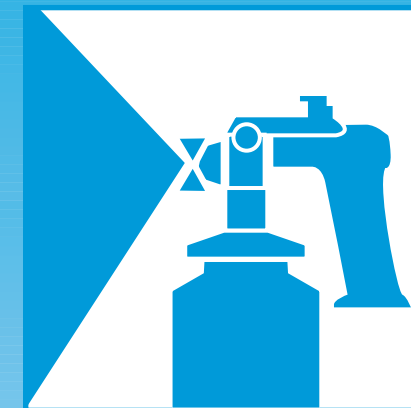
©HSS Hire Service Group Plc 1998 No. 810/01

Group Office: 25 Willow Lane, Mitcham, Surrey CR4 4TS

Web Site: <http://www.hss.co.uk>

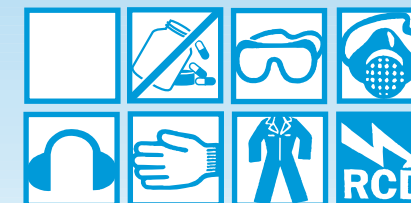
Operating & Safety Guide 810

HSS Hire Shops



Portable Turbine and Large Volume Turbine HVLP Sprayer

Powerful 3 stage turbine sprayer suitable for spraying multi-flek, enamel and acrylic finishes. Two versions available. Portable turbine unit complete with cup and gun or a trolley mounted sprayer complete with 1.9 litre paint pot for larger applications.



Code 61461, 61464


GENERAL SAFETY


For advice on the safety and suitability of this equipment, contact your local HSS Hire Shop.


Check the equipment before use, paying special attention to the air hoses. If it shows signs of damage or excessive wear, return it.


Keep children, animals and bystanders out of the work area and never point the spray-gun at anyone.

This equipment should be used only by an able-bodied competent adult who has read and understood these instructions. Anyone with either a temporary or permanent disability should seek expert advice before using it.

 Never use this equipment if you are feeling tired, ill, or under the influence of alcohol or drugs.

 Wear goggles and a face-mask suitable for the material you are spraying. If in doubt, contact either the material's manufacturer or your local HSS Hire Shop for advice.

 This equipment generates potentially harmful noise levels. To comply with Health & Safety at Work regulations, ear defenders must be worn by everyone in the vicinity.

 Wear suitably practical clothing and footwear. Tie back long hair and avoid loose garments and jewellery that could interfere with the work.

Ensure the work area is well lit and well ventilated.

Never spray at or near electrical fittings or equipment.

If spraying flammable materials, DO NOT SMOKE and make sure there are no potential sources of ignition in the work area.

Always SWITCH OFF, UNPLUG and DEPRESSURISE the equipment before changing paints, cleaning filters and so on. Never leave it switched on and unattended.


ELECTRICAL SAFETY

Most HSS equipment is designed to plug straight into a standard, 240V 13A power socket.

However, 110V models (with a round yellow plug) must be provided with a suitable 110V generated power supply, or powered from the mains via a suitable 110V transformer.

Extension leads should be fully unwound and loosely coiled, away from the equipment. Never run them through water, over sharp edges or where they could trip someone.

Keep the equipment dry. Using electrical equipment in very damp or wet conditions can be dangerous.

 To reduce the risk of electric shock, use a suitable RCD (Residual Current-Operated Device) available from your local HSS Hire Shop.

Never carry or pull the equipment by its flex and hoses.

Ensure the equipment is switched OFF before plugging it into the power supply.

If the equipment fails, or if its flex or plug gets damaged, return it. Never attempt to repair it yourself.

GETTING STARTED

Prepare the surface you are spraying and the material to be sprayed according to the material manufacturer's instructions.

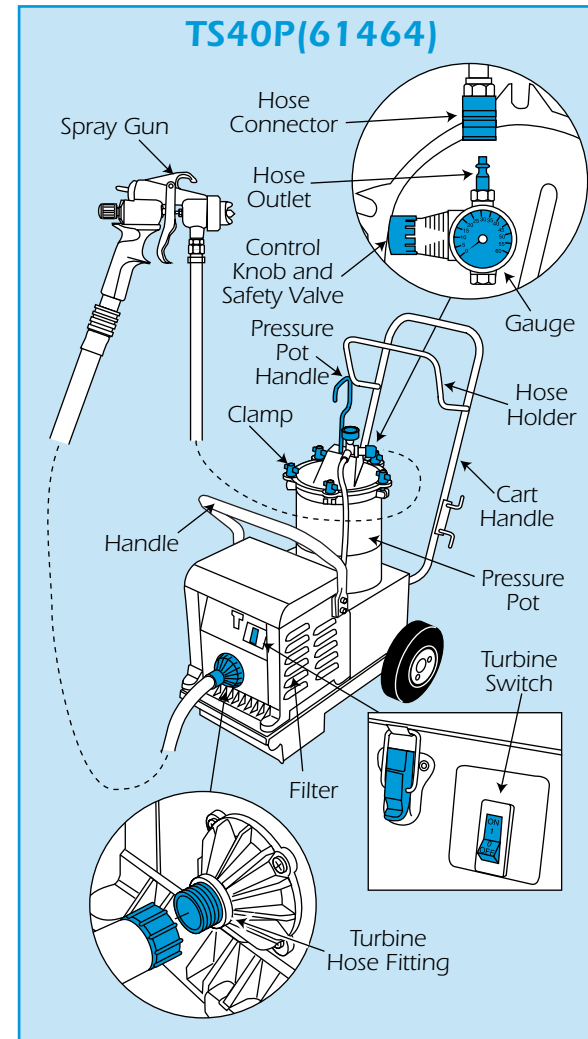
Position the turbine unit close to its power source and well away from the spray area.

With the unit disconnected from its power source, screw the air-hose hand-tight onto the turbine's air outlet. Connect the other end of the air-hose to the spray-gun. Simply pull back the quick-release connector's outer sleeve, push the hose onto the gun's air-inlet and let the sleeve snap back into place.

Nozzles & Air-Caps

Always make sure the spray-gun is fitted with the correct nozzle and air-cap for the material being sprayed. If in doubt, contact your local HSS Hire Shop.

| Viscosity | Finish | Needle/Nozzle | Air Cap |
|--------------|-----------------------|---------------|----------|
| Thin | Lacquers | .029 (0.7mm) | #3 |
| | Stains | | |
| | Basecoats | | |
| Medium | Clearcoat | .043 (1.1mm) | #2 |
| | Cellulose | | |
| | Stoving Enamels | | |
| | Red Oxide | | |
| | Decorator's Gloss | | |
| Medium-Thick | Interior Emulsions | .051 (1.3mm) | #0 or #1 |
| | Enamels | | |
| | Undercoats | | |
| | Industrial Primers | | |
| Thick | Exterior Emulsions | .073 (1.9mm) | #1 or #0 |
| | Masonry Paints | | |
| | H.B. Primer | | |
| | | | |
| Thick-Heavy | Multi-Colour Coatings | .118 (3mm) | #4 |
| | Textured Coatings | | |



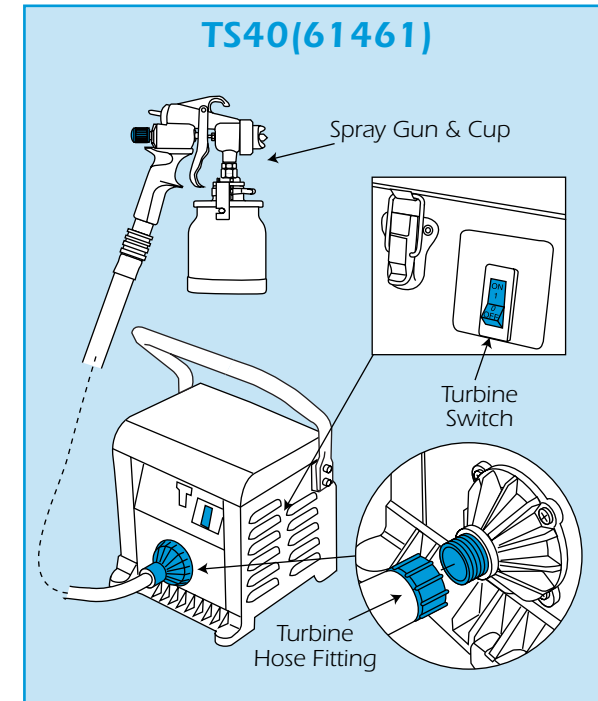
If using the Portable Turbine Unit... Remove the spray-gun's paint-cup and fill with whatever you are spraying until about full – that is, up to the level of the cup's shoulder.

Refit the paint-cup to the spray-gun, making sure it is securely fastened.

Finally, connect the unit to its power supply and switch ON.

If using the Large Volume Turbine Unit... Stir whatever you are intending to spray and then pour into the pressure pot's liner. Never pour paint directly into pot. If using a paint tin, remove the liner and place the tin inside the unit's pressure pot. It will accommodate standard paint tins of up to 5 litres.

Having ensured the gasket on the underside is clean and



in place, refit the pressure pot's lid and clamp securely in place, tightening the clamps in opposite pairs to seat the lid correctly.

That done, connect the unit to its power supply and switch ON.

Now, with the pressure pot's pressure control turned fully anti-clockwise, connect the red air hose to the pressure pot and adjust the pressure, switch ON the compressor control clockwise until the gauge stabilises at between 10-15psi for most standard paints, 25-30psi for multi-colour finishes.

If you need to reduce the pressure for any reason, simply open the pressure pot's safety valve.

Once the desired pressure has been achieved, switch OFF the compressor and check the pressure pot's lid and air-hose connections for leaks – you will hear air hissing out.

WHATEVER you are using... Remove the spray-gun's air-cap assembly and trigger the gun to prime the system. Ideally, you should see a jet of paint arc out with a radius of between 150mm and 200mm.

Release the trigger, wipe the gun's nozzle clean and refit the air-cap by screwing it fully home then loosening it approximately one full turn.

Finally, turn on the unit's turbine and start spraying.