

Sand parquet, overlay and wood block floors in two directions – along the length of the room and across the width.

Starting in a corner, tackle the floor in strips; overlapping these by about 75mm. Once you have sanded the entire floor **repeat using progressively finer grades** to achieve the desired finish.

Never switch the sander OFF or ON without the abrasive pad in contact with the floor.

Never apply too much pressure to the sander, its weight alone is enough.

Once you have sanded as much as possible with the sander you can then tackle the perimeter with an orbital hand sander.

EQUIPMENT CARE

Never push the equipment beyond its design limits. If it will not do what you want with reasonable ease, assume you have the wrong tool for the job. Ask at your local HSS Hire Shop for advice.

Dust bags are simply fitted by pushing into place. Always change the dust bag when the contents reach the MAX line.

Dispose of wood dust carefully.

Never use a sander that has not got an abrasive fitted.

Always use the right abrasive for the job and change it as soon as it becomes clogged or damaged.

When not in use **store the equipment with the dust bag removed somewhere clean, dry and safe** from thieves.

Keep the equipment clean. You will find this less of a chore if you clean up regularly rather than wait until the end of the hire period.

BEFORE DECORATING

Sand the floor and seal before decorating. Wallpaper paste and paint spills can be wiped up more easily – without staining – if the floor is sealed first. A floor finish is available from your HSS Hire Shop, on a sale or return basis. **You must follow the manufacturers instructions for its correct application.**

Wear all necessary protective clothing and ventilate the room when applying.

A respiratory protective system is available for hire, for details contact your local HSS Hire Shop.

Before varnishing sweep and vacuum the floor. Wipe over with a lint free cloth, lightly dampened with white spirit. Leave to dry for approximately 2 hours, keeping windows open and doors shut – allow the spirit to evaporate.

FINISHING OFF

Switch OFF and unplug the sander.

Leave the sanding block and used sheet of abrasive paper in place to protect the machine.

Remove and dispose of the dust bag.

Neatly coil its flex ready for return to your local HSS Hire Shop.



...any comments?

If you have any suggestions to enable us to improve the information within this guide please fax your comments or write to the Product Manager at the address below

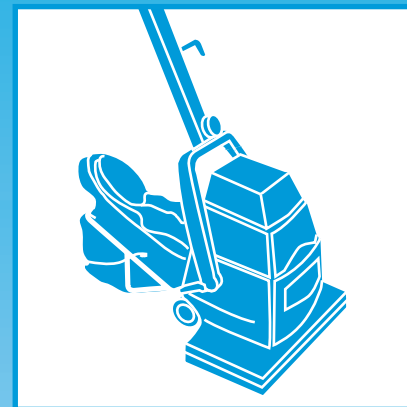
Fax: 0181-687 5001

©HSS Hire Service Group Plc 1999 No. 878/01

Group Office: 25 Willow Lane, Mitcham, Surrey CR4 4TS

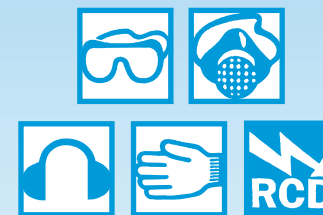
Web Site: <http://www.hss.co.uk>

HSS Hire Shops



Orbital Floor Sander

For sanding fine parquet, pre-finished and laminated overlay flooring.



GENERAL SAFETY

For advice on the safety and suitability of this equipment contact your local HSS Hire Shop.

This equipment should be used by an able bodied, competent adult who has read and understood these instructions. Anyone with either a temporary or permanent disability, should seek expert advice before using it.

Keep children, animals and bystanders away from the work area.



Never use this equipment if you are ill, feeling tired, or under the influence of alcohol or drugs.



Safety goggles must be worn by everyone in the work area.



Some materials contain substances which, when sanded, can be harmful to health. A suitable mask must be worn when using this equipment.



This equipment generates potentially harmful noise levels. To comply with Health and Safety at Work regulations, ear defenders must be worn by everyone in the vicinity.



Wear practical protective clothing, footwear and gloves. Avoid loose garments and jewellery that could catch in moving parts. Tie back long hair.

Never carry or pull the machine by its power supply cable.

Check the equipment before use, if it shows signs of damage or excessive wear, return it.

Fire Warning

WOOD DUST IS EXPLOSIVE.

Never store wood dust it can be dangerous.

Replace or remove the disposable dust bag when the dust reaches the MAX line and before leaving or storing the machine.

Never reuse a disposable dust bag.

Never dispose of the dust bag or its contents in an incinerator or fire – it may explode.

Never leave a dust bag in a building, vehicle, closed space or container – it can ignite spontaneously.

Always replace the dust bag if it becomes damaged or torn.

To dispose of the bag and its contents safely, mix the dust with general rubbish.

Ensure the work area is well ventilated and free from anything that could ignite wood dust.

Always switch OFF and unplug the machine before making any adjustments to it.

COSHH Information sheets are available from your local HSS Hire Shop.

ELECTRICAL SAFETY

Most HSS equipment is designed to plug straight into a standard 240v 13A power socket. However, 110V models (with a round yellow plug) must be powered only from the mains via a suitable transformer.

Extension leads should be fully unwound and loosely coiled away from the equipment. Never run them through water, over sharp edges, or where they could trip someone.

Using electrical equipment in very damp or wet conditions can be dangerous.



To reduce the risk of electric shock, use a suitable RCD (Residual Current-Operated Device) available from your local HSS Hire Shop.

If the equipment fails, or if its power supply cable or plug gets damaged, return it. Never try to repair it yourself.

Ensure the sander and power socket are switched OFF before plugging into the power supply.

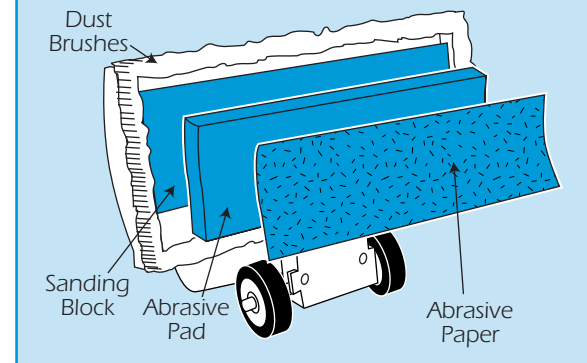
GETTING STARTED

Ensure the floor is free from protruding nails and screws. If these cannot be removed, drive them well below the surface.

If necessary connect the supply cable from the handle assembly to the power unit by inserting the plug and turning clockwise.

Fit the sander with the appropriate abrasive. In general, start with a medium grade, then work through to a fine grade until the desired finish is achieved.

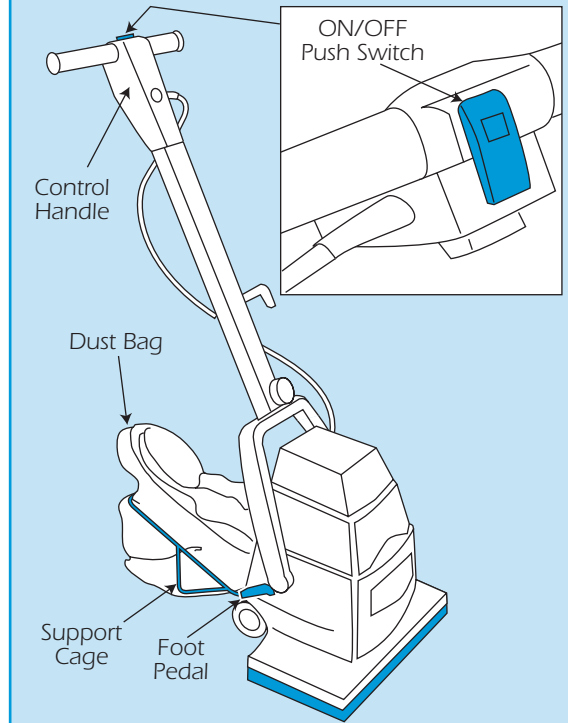
Attaching Abrasives



Tilt the machine back to reveal the sanding block, fit an abrasive pad together with a sheet of abrasive paper of the required grade. Push the abrasive pad firmly against the sanding block ensuring it sits squarely on.

Now raise the machine up again and familiarise yourself with the controls.

Orbital Floor Sander



To tilt the control handle back in to the operating position, depress the foot pedal with your right foot. To return the control handle simply raise back again.

There is a push ON/OFF switch in the centre of the control handle, to switch the unit ON simply hold the switch down with either your right or left thumb. The unit will switch OFF as soon as the switch is released. NEVER press this switch with the control handle in the upright position.

There is a dust extraction system incorporated in this machine and will collect approximately 65% of the dust produced.

To fit the dust bag, lower the support cage and carefully slip the bag over the outlet taking care not to damage the bag. For more information see the 'Fire Warning' box in general safety.

All that remains is to plug the sander into its power supply and switch the supply ON.

BASIC TECHNIQUES

Sand floorboards along their length, levelling any that are uneven by first working diagonally across them.