

**Keep the equipment clean.** You will find this less of a chore if you clean it up regularly rather than wait until the end of the hire period.

When not in use, **store the equipment somewhere clean, dry and safe** from thieves.

## FINISHING OFF

**Switch the smoke eliminator OFF and unplug the unit from the power supply.**

**Disconnect the hose and collect all parts together.**

**Neatly coil the power supply lead and give the unit a final clean ready for return,** to your local HSS Hire Weld Depot.



### ...any comments?

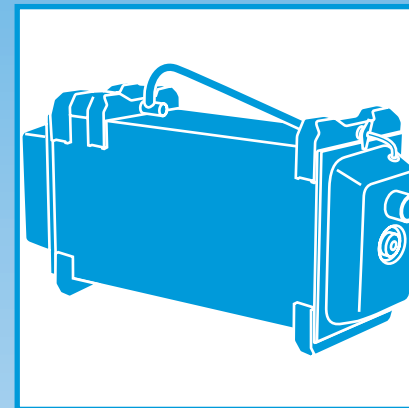
If you have any suggestions to enable us to improve the information within this guide please fax your comments or write to the Product Manager at the address below

**Fax: 020 8687 5001**

©HSS Hire Service Group Plc 2001 No. HW014/01  
Group Office: 25 Willow Lane, Mitcham, Surrey CR4 4TS

Web Site: <http://www.hireweld.co.uk>

# HSS Hire-Weld



## Smoke Eliminator

A portable welding smoke eliminator with filtration facility, removing the necessity for external ducting.



## GENERAL SAFETY

For advice on the safety and suitability of this equipment contact your local HSS Hire Weld Depot.

There is a serious risk of personal injury if you do not follow all instructions laid down in this guide.

The hirer has a responsibility to ensure that all necessary risk assessments have been completed prior to the use of this equipment.

Most welding tasks may be considered as hot work in site situations and may be subject to specific permits to work.

This equipment should only be used by an operator who has been deemed competent to do so by his/her employer.

This equipment should be used by an able bodied, competent adult who has read and understood these instructions. Anyone with either a temporary or permanent disability, should seek expert advice before using it.

Keep children, animals and bystanders away from the work area. Cordon off a NO GO area using cones and either barriers or tape, available for hire from your local HSS Hire Weld Depot.



Never use this equipment if you are ill, feeling tired, or under the influence of alcohol or drugs.

Always transport, store and operate the machine in an upright position.

Keep the units air vents clear of all obstructions.

Ensure the work area is well lit, ask about lighting equipment at your local HSS Hire Weld Depot.

Do not work near flammable gases or liquids, petrol or paint thinner fumes for example. Keep combustible materials at a safe distance – at least 5m.

Check the condition of the equipment before use. If it shows signs of damage or excessive wear, return it to your local HSS Hire Weld Depot.

## ELECTRICAL SAFETY

Most HSS Smoke Eliminators plug into a standard 230V 13amp earthed power socket. However, 110V models (with a round yellow plug) must be provided with a suitable 110V 16amp generated supply, or powered from the mains via a suitable 110V transformer.

If the equipment fails, or if its power supply cable or plug becomes damaged, return it. Never try to repair it yourself.

Keep cables out of harm's way, and clear of the work area.

Extension leads should be fully unwound and loosely coiled, away from the equipment. Never run them through water, over sharp edges or where they could trip someone.

Keep the equipment dry, using electrical equipment in very damp or wet conditions can be dangerous.



To reduce the risk of electric shock, always use a suitable RCD (Residual Current-Operated Device) available from your local HSS Hire Weld Depot.

Ensure the Smoke eliminator and the power socket are switched OFF before plugging into the power supply.

## GETTING STARTED

The HSS smoke eliminator is designed for indoor use only.

It should only be used to eliminate smoke created by a welding process, do not use the unit for beryllium, cadmium, lead, asbestos and similar hazardous products.

Take the unit to the work place and position it on firm level ground.

The unit is supplied with a hose and a magnetically held nozzle, which will attach itself to any steel surface.

Position the nozzle as close to the weld area as possible, you can have the nozzle as close as 50mm. Connect the extraction hose to the end of the nozzle and the smoke eliminator, aiming to have the extractor as far away as possible.

All that remains is to plug the unit into its power supply and switch the supply ON.

## BASIC TECHNIQUES

This model offers two extra features to help the operator achieve maximum results.

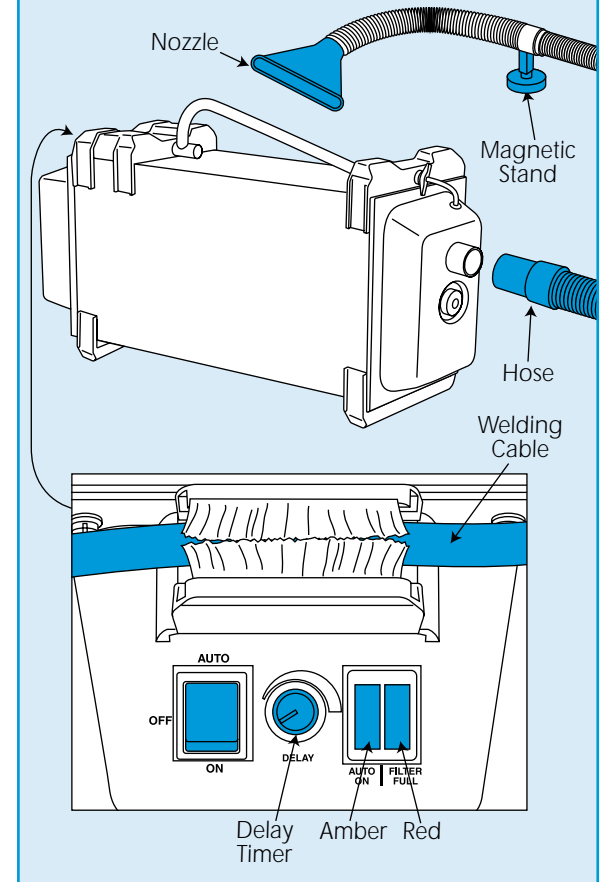
The ON / OFF switch has three positions, ON, OFF and Auto. When set to ON the unit will run continuously, when set to Auto, the unit will switch ON when the welding starts and OFF when the weld stops.

To use the Auto setting, the welding cable must be positioned under the brush-covered channel on the front of the unit.

When set to Auto the amber lamp will illuminate.

You can also set the delay timer dial. This device keeps the unit running for a set time between 5 and 25 seconds after the weld has stopped. It is ideal for ensuring complete clearance of the welding fumes and partials.

## Smoke Eliminator



Set the unit up as required (ON or Auto) then move the switch either to ON or Auto.

Begin the weld and check that all the welding fumes are being drawn into the nozzle.

When the work is finished, switch the eliminator OFF.

If the red indicator lamp illuminates during use, the filter system is full and the unit must not be relied upon. Return the unit to your local HSS Hire Weld Depot for a replacement

## EQUIPMENT CARE

Never push the equipment beyond its design limits. If it will not do what you want with reasonable ease and speed, assume you have the wrong type or size of extraction unit for the job. Ask at your local HSS Hire Weld Depot for advice.