

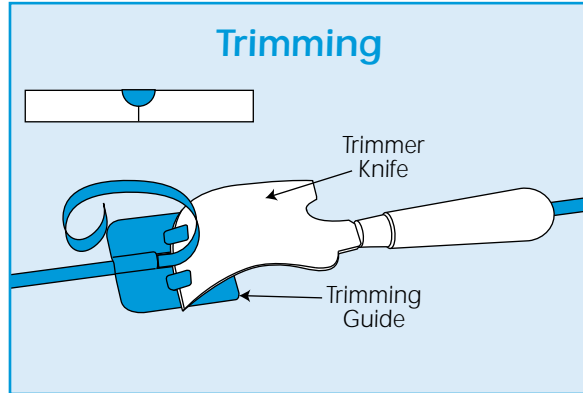
Note that recommended settings are merely guides. Changing them slightly may give better results. So, always perform a test weld.

BASIC TECHNIQUES

As the rod and groove surfaces soften, move the air gun back along the groove whilst feeding the welding rod into the weld.

As the weld progresses, push the weld rod tightly into the groove using the rod bedding tool.

Once completed, wait a few minutes for the weld to cool, then trim the excess in two stages.

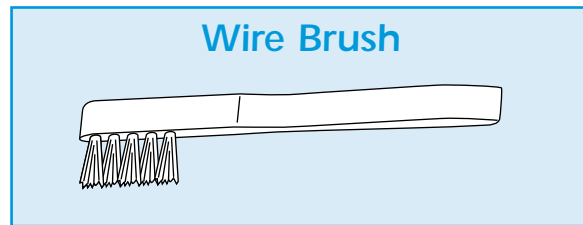


Firstly using the trimming knife and trimming guide (see illustration) then secondly using the trimming knife on its own.

EQUIPMENT CARE

Never push the equipment beyond its design limits. If it will not do what you want with reasonable ease and speed, assume you have the wrong type or size of welder for the job. Ask at your local HSS Hire Weld Depot for advice.

When not in use, store the equipment somewhere clean, dry and safe from thieves.



Keep the equipment clean. You will find this less of a chore if you clean it up regularly rather than wait until the end of the hire period. **Remove any build-up of melted welding rod with the wire brush provided.**

FINISHING OFF

Switch OFF and unplug the air gun, then leave everything to cool.

Remove any remaining welding rod from the feed tube then remove the feed tube from the nozzle.

Neatly coil the power supply cable and place everything in the carry case ready for return, to your local HSS Hire Weld Depot.



...any comments?

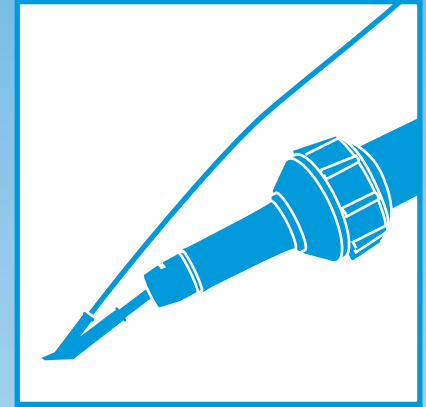
If you have any suggestions to enable us to improve the information within this guide please fax your comments or write to the Product Manager at the address below

Fax: 020 8687 5001

©HSS Hire Service Group Plc 2001 No. HW026/01
Group Office: 25 Willow Lane, Mitcham, Surrey CR4 4TS

Web Site: <http://www.hireweld.com>

HSS Hire-Weld



Hot Air Plastic Welding Gun

Designed for a wide range of welding tasks but primarily for jointing vinyl flooring seams.



GENERAL SAFETY

For advice on the safety and suitability of this equipment contact your local HSS Hire Weld Depot.

There is a serious risk of personal injury if you do not follow all instructions laid down in this guide.

The hirer has a responsibility to ensure that all necessary risk assessments have been completed prior to the use of this equipment.

Most welding tasks may be considered as hot work in site situations and may be subject to specific permits to work.

This equipment should only be used by an operator who has been deemed competent to do so by his/her employer.

This equipment should be used by an able bodied, competent adult who has read and understood these instructions. Anyone with either a temporary or permanent disability, should seek expert advice before using it.

Keep children, animals and bystanders away from the work area. Cordon off a NO GO area using cones and either barriers or tape, available for hire from your local HSS Hire Weld Depot.

Never use this equipment if you are ill, feeling tired, or under the influence of alcohol or drugs.



Safety goggles MUST be worn by everyone in the work area.



Wear practical, protective clothing, gloves and footwear. Avoid loose garments and jewellery that could catch in moving parts, tie back long hair.

Keep the power unit's air vents clear of all obstructions.

Always switch equipment OFF before making any adjustments to it. Never leave it switched ON and unattended.

Ensure the work area is well lit and ventilated, lighting and ventilation equipment is available for hire from your local HSS Hire Weld Depot.

Do not work near flammable gases or liquids, petrol or paint thinner fumes for example. Keep combustible materials at a safe distance – at least 5m.

Make sure you know how to switch this machine OFF before you switch it ON in case you get into difficulty.

Check the condition of the equipment before use. If it shows signs of damage or excessive wear, return it to your local HSS Hire Weld Depot.

ELECTRICAL SAFETY

The HSS Hot Air Plastic Welding Gun requires a suitable 110V 16amp generated supply, or may be powered from the mains via a suitable 110V transformer.

If the equipment fails, or if its power supply cable or plug becomes damaged, return it. Never try to repair it yourself.

Keep cables out of harm's way, and clear of the work area.

Extension leads should be fully unwound and loosely coiled, away from the equipment. Never run them through water, over sharp edges or where they could trip someone.

Keep the equipment dry, using electrical equipment in very damp or wet conditions can be dangerous.



To reduce the risk of electric shock, always use a suitable RCD (Residual Current-Operated Device) available from your local HSS Hire Weld Depot.

Ensure the air gun and the power socket are switched OFF before plugging into the power supply.

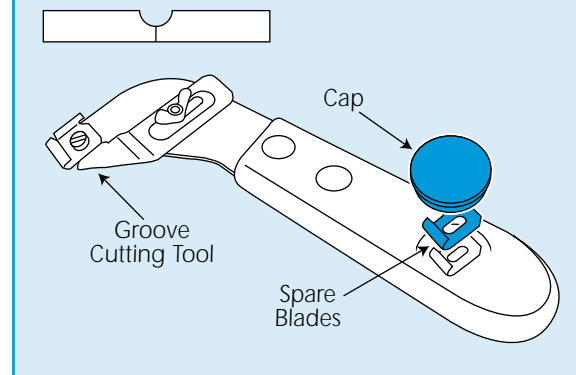
GETTING STARTED

This guide is designed to help the user to safely set up and dismantle the air gun. It is not intended as a guide to vinyl floor jointing techniques as it is assumed that the user already has the necessary training/knowledge and experience.

This equipment should only be used for welding PVC, polyolefin, vinyl and linoleum floor coverings. The floor area MUST be clean and dry.

You must refer to the floor-covering manufacturer for information on the correct heat setting for the air gun.

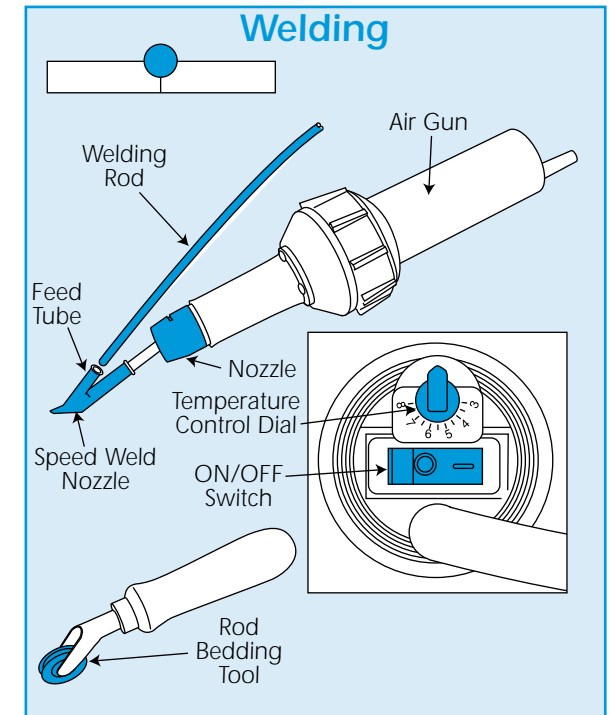
Groove Cutting



Having positioned the vinyl flooring sheets as required, and butted the two edges close together, run the groove-cutting tool along the centre of the joint line.

Cut a groove no more than 2/3rds the depth of the floor covering.

Clear the groove of any debris then prepare the air gun.



You have the option of using the speed weld nozzle fitted to the tip of the air gun's nozzle, this has a built in welding rod feed tube. Alternatively, you can use the unit without the speed weld nozzle and use the rod bedding tool to push the rod firmly into the joint.

Plug the air gun into its power supply and switch the supply ON.

If using the speed weld nozzle, feed the end of the welding rod into the feed tube.

If not using the speed weld nozzle, position the end of the rod into the joint and hold down with the bedding tool.

Set the air gun temperature control fully anticlockwise and switch the gun ON by moving the ON/OFF switch to the 'I' position.

When you are ready to begin welding, turn the temperature control anticlockwise to the temperature stated by the floor-covering manufacturer.

The chart below gives an approximate idea of the air gun temperature control number to actual air temperature.

Dial Number	1	2	3	4	5	6	7	8	9	10
Temperature 'C'	100	180	260	340	420	500	540	580	620	700