



THE WORLD LEADER IN LADDERS™

EXTENSION PLUS™

X3

THREE LADDERS IN ONE

X4

FOUR LADDERS IN ONE

USER GUIDE



BEFORE USE

- Read all instructions on and accompanying the ladder.
- Inspect the ladder after delivery. Before every use visually check the ladder is not damaged and is safe to use.
- Do not use a damaged ladder.
- Do not use the ladder if you are not fit enough. Certain medical conditions or medication, alcohol or drug abuse could make ladder use unsafe.
- Ensure the ladder is suitable for the task.
- Visually check the ladder is not damaged and is safe to use at the start of each day when the ladder is to be used.
- Inspect ladder feet.
- Do not use the ladder until the stabiliser bar has firstly been fully attached and secured to the ladder.
- Do not use the ladder if contaminated, e.g. with wet paint, mud, oil, water or snow.
- Prevent damage of the ladder when transporting e.g. by fastening and ensure they are suitably placed to prevent damage.
- For professional users regular periodic inspection is required.
- For professional use, a risk assessment shall be carried out respecting the legislation in the country of use.
- Do not modify the ladder design.

POSITIONING & ERECTING THE LADDER

- When positioning the ladder, take into account risk of collision with the ladder e.g. from pedestrians, vehicles or doors. Secure doors (not fire exits) and windows where possible in the work area.
- **Warning! Electricity hazard.** Identify any electrical risks in the work area, such as overhead lines or other exposed electrical equipment and do not use the ladder where electrical risks occur.

- Do not erect ladder on contaminated ground. Ladders shall not be positioned on slippery surfaces (such as ice, shiny surfaces or significantly contaminated solid surfaces) unless additional effective measures are taken to prevent the ladder slipping or ensuring contaminated surfaces are sufficiently clean.
- Do not use the ladder on an unlevel or unfirm base.
- Ladder shall be on an even, level and unmovable base.
- Do not lean the ladder against unsuitable surfaces. Leaning ladder should lean against a flat non-fragile surface and should be secured before use e.g. tied or use of a suitable stability device.
- Standing ladders shall not be used as a leaning ladder unless it is designed to do so.
- Ladder shall be erected at the correct position with the rungs or treads level and complete opening of a standing ladder.
- Open the ladder fully before use.
- Use the ladder with restraint devices engaged only.
- Only use the ladder in the direction as indicated.
- Ladder shall be erected at the correct position, such as the correct angle for a leaning ladder (angle of inclination approximately 1:4) with the rungs or treads level.
- Keep the arrow vertical for correct working angle.
- Locking devices shall be checked and be fully secured before use.
- Ladder should be stood on its feet, not the rungs or steps.
- Leaning ladders with steps, shall be used that the steps are in a horizontal position.
- Secure ladder at the top and bottom wherever possible. If not, station someone at the foot of the ladder.
- Do not move a ladder while standing on it.
- Ladder shall never be repositioned from above.

USING THE LADDER

- Do not exceed the maximum total load (load includes users, tools, materials, etc.).
- Maximum number of users on the ladder.
- Do not wear unsuitable footwear when climbing a ladder.
- Do not ascend or descend unless you are facing the ladder.
- Keep a secure grip on the ladder when ascending and descending. Maintain 3 points of contact whilst working from a ladder or take additional safety precautions if you cannot.
- Do not stand on the top three steps/rungs of a leaning ladder.
- Do not stand on the top two steps/rungs of a standing ladder without a platform and a hand/knee rail.
- When used in the standing ladder position with extending ladder at the top or in the stairway position, do not stand on the top four steps/rungs.
- Do not stand on these rungs/steps or the tool tray (if applicable).
- Do not overreach, user should keep their belt buckle (navel) inside the stiles and both feet on the same step/rung throughout the task.
- Avoid work that imposes a sideways load on ladders, such as side-on drilling through solid materials.
- Do not carry equipment which is heavy or difficult to handle while using a ladder.
- Equipment carried while using a ladder should be light and easy to handle.
- Leaning ladders used for access to a higher level shall be extended at least 1m above the landing point and secured if necessary.
- Do not step off the side of standing or leaning ladder onto another surface.
- Use non-conductive ladders for unavoidable electrical work.
- Secure doors (not fire exits) and windows where possible in the work area.
- Do not use the ladder outside in adverse weather conditions, such as strong wind.
- When outdoors, be cautious in windy conditions.
- Ladders should only be used for light work of a short duration.
- Do not spend long periods on the ladder without regular breaks (tiredness is a risk).

Pivot Brackets

Ensure both pivot brackets are correctly fully engaged when opening ladder sections.



Correctly Engaged



NOT Engaged

Rung Hooks

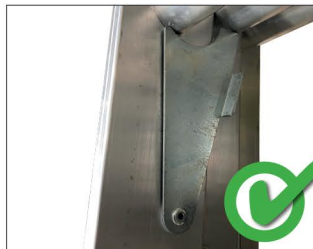
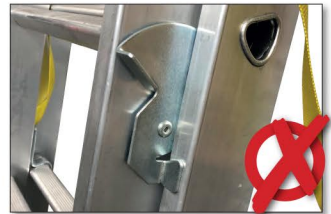
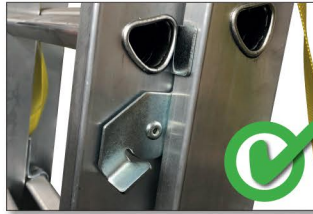


Correctly Engaged

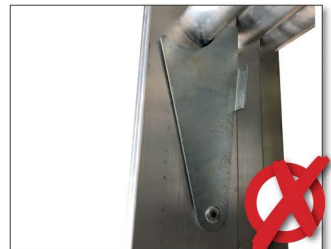


NOT Engaged

Locking Catches



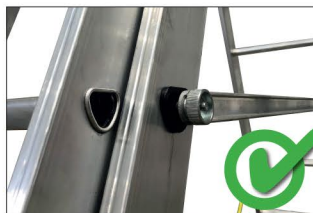
Locked



Unlocked

Locking Bar

Secure the ladder by fully locating the expanding plug within the rung hole and then tightening the wheel nut.

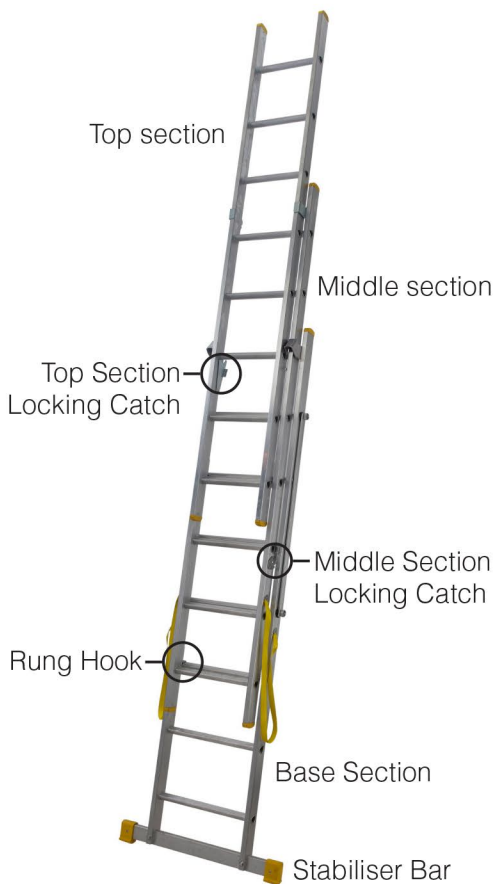


Correctly Located



NOT Fully Located

Extension Ladder Mode



1. Place the ladder horizontally on the ground and unlock the section locking catch(es)
2. Disengage the rung hooks, extend the ladder sections to the desired overall ladder length, fully re-engage the rung hooks and lock the section locking catch(es).
3. Check that the rung hooks are fully engaged and the locking catch(es) is/are securely in place and fully engaged to prevent the ladder sections from separating.



Do not stand on the top 3 rungs of the ladder when in this mode.

Stairwell Ladder Mode

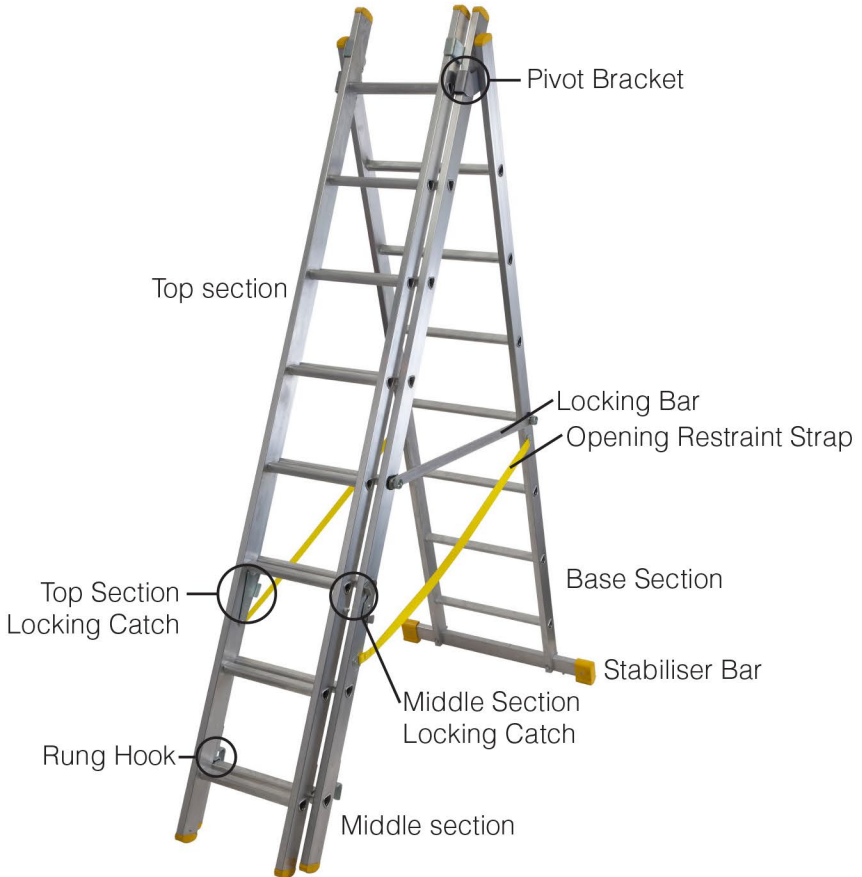


1. Unlock the middle section locking catch.
2. Disengage the middle section rung hooks, open the base and middle sections fully (as far as the pivot brackets will allow) and ensure / check that both pivot brackets are fully engaged with the nearest middle section rung when the ladder is set in the required position for the stairway.
3. Fully locate the locking bar expanding plug within the middle section rung hole (location is dependent on the size of the ladder) ensuring that the bar is horizontal and then secure by tightening the wheel nut.
4. Unlock the top section locking catch (X4 models only).
5. Disengage the top section rung hooks, extend the top ladder section to the desired height, re-engage the top section rung hooks and lock the top section locking catch (X4 models only).



Do not stand on the top 4 rungs of the extended top section when the ladder is in this mode (X4 models only).

Stepladder Mode

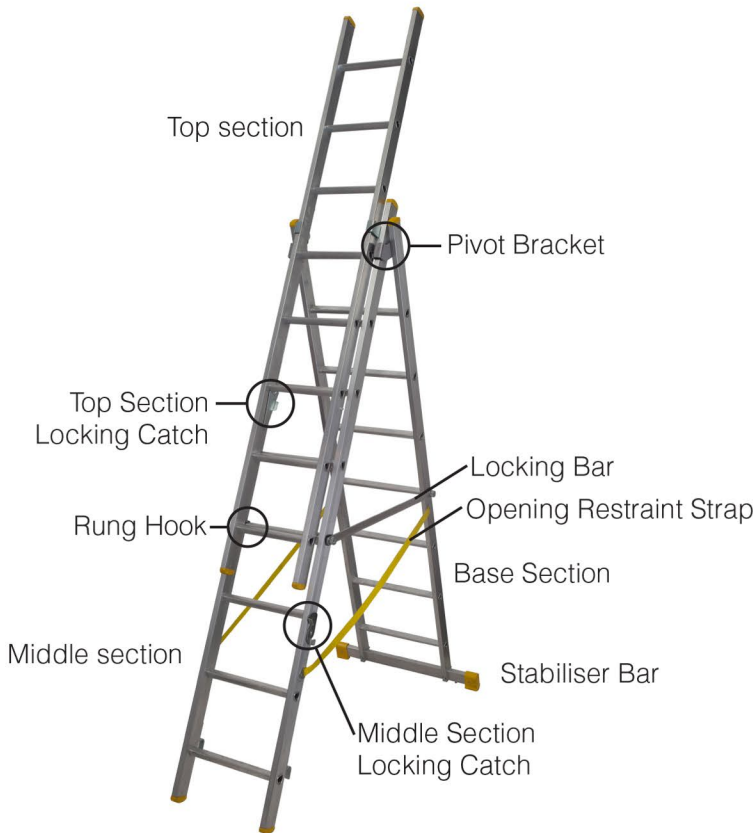


1. Unlock the middle section locking catch.
2. Disengage the middle section rung hooks, open the base and middle sections fully (as far as the pivot brackets will allow) and ensure / check that both pivot brackets are fully engaged with the middle section top rung.
3. Fully locate the locking bar expanding plug within the middle section rung hole (location is dependent on the size of the ladder) ensuring that the bar is horizontal and then secure by tightening the wheel nut.



Do not stand on the top 2 rungs of the ladder when in this mode.

Freestanding Extension Ladder Mode (**X4** Models only)



1. Unlock the middle section locking catch.
2. Disengage the middle section rung hooks, open the base and middle sections fully (as far as the pivot brackets will allow) and ensure / check that both pivot brackets are fully engaged with the middle section top rung.
3. Fully locate the locking bar expanding plug within the middle section rung hole (location is dependent on the size of the ladder) ensuring that the bar is horizontal and then secure by tightening the wheel nut.
4. Unlock the top section locking catch.
5. Disengage the top section rung hooks, extend the top ladder section to the desired height, re-engage the top section rung hooks and lock the top section locking catch.
6. Check that the top section rung hooks are fully engaged and the locking catch is securely in place and fully engaged to prevent the top ladder section from separating.



Do not stand on the top 4 rungs of the extended top section when the ladder is in this mode.



THE WORLD LEADER IN LADDERS™

The Causeway, Maldon, Essex, CM9 4LJ

Tel: +44 (0) 1621 745 701

Email: uk.customercare@wernerco.com

www.wernerladder.co.uk