

Think carefully about the direction of the air flow. The fan is powerful enough to move quite heavy objects and send them hurtling towards windows, people and other susceptible items.

Never allow your hands to enter either end of the fan unit, for any reason. If the fan should block, turn the unit OFF, unblock it with a suitable tool, not your hands.

Take your time and don't over do it. You are more likely to have an accident if you are tired or rushing.

EQUIPMENT CARE

Never push the equipment beyond its design limits. If it will not do what you want with reasonable ease and speed assume you have the wrong tool for the job. contact your local HSS Hire Shop.

Keep the equipment clean, you will find this less of a chore if you clean up regularly rather than wait until the end of the hire.

When not in use, **store the equipment, somewhere clean, dry and safe** from thieves.

Regularly check the fuel level and top up as necessary using 2-stroke oil and unleaded petrol mixed as directed on the 2-stroke oil container.

FINISHING OFF

If necessary, set the fixed throttle control to idle then turn OFF the ON/OFF switch and wait for the engine to stop.

Let the engine cool then **thoroughly clean the machine ready for return** to your local HSS Hire Shop.



...any comments?

If you have any suggestions to enable us to improve the information within this guide please fax your comments or write to the Product Manager at the address below

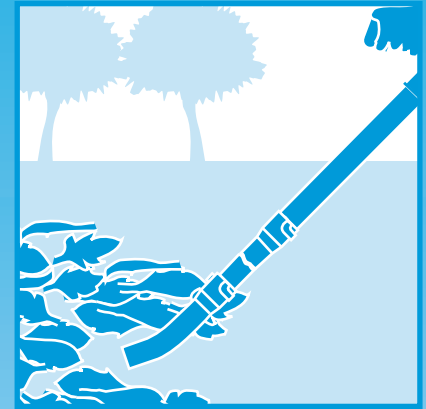
Fax: 0181-687 5001

©HSS Hire Service Group Plc 1998 No. 852/01
Group Office: 25 Willow Lane, Mitcham, Surrey CR4 4TS

Web Site: <http://www.hss.co.uk>

Operating & Safety Guide 852

HSS Hire Shops



Back Pack Leaf Blower Petrol

For collecting leaves, clippings and litter.



Code 62376


GENERAL SAFETY

For advice on the safety and suitability of this equipment contact your local HSS Hire Shop.


There is a serious risk of personal injury if you do not follow all instructions laid down in this guide.

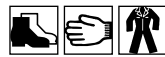
This equipment has been designed to be used by an able bodied, competent adult who has read and understood these instructions. Anyone with either a temporary or permanent disability, should seek expert advice before using it.

Keep children, animals and bystanders away from the work area.

 Never use this equipment if you are ill, feeling tired, or under the influence of alcohol or drugs.

 Safety Goggles MUST be worn by everyone in the work area.

 This equipment generates potentially harmful noise levels. To comply with health and safety at work regulations, ear defenders must be worn by everyone in the vicinity.

 Wear practical, protective clothing, gloves and footwear. Avoid loose garments and jewellery that could get in the way of the work, tie back long hair.

Check the equipment before use. If it shows signs of damage or excessive wear, return it.

Exhaust Danger

NEVER operate 2 stroke petrol engines indoors or in a confined space.

The exhaust from the engine contains gases that can Kill.

Never direct the blower outlet at anybody.

Do not use this machine to move glass and other sharp objects.

Always switch OFF the equipment when not in use.

Fuel Safety

NEVER refuel while the engine is hot or running. Never smoke or allow naked lights into the area while refuelling. Never inhale fuel vapour.

ALWAYS mop up spillage's as quickly as possible, and change your clothes if you get fuel on yourself.

ALWAYS store fuel in a purpose-made sealed container, in a cool, safe place well away from the work area.

Engines, especially the exhausts, get very hot so switch OFF and allow to cool before touching them.

Keep flammable materials well away from the engine and exhaust.

Watch your footing. Take special care if working other than on firm, level ground.

COSHH information sheets are available from your local HSS Hire Shop.

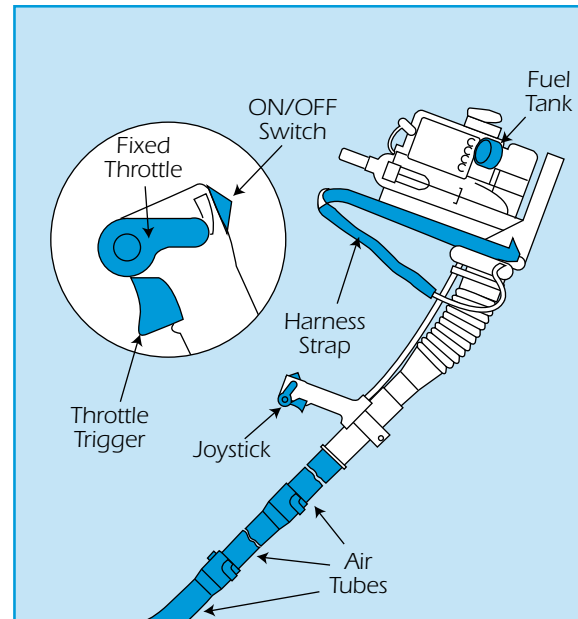
GETTING STARTED

The unit may or may not have the air tube extensions attached. To attach the air tube extension push it on and turn clockwise to lock.

This machine is designed to be carried on your back during use, it should not be used free hand.

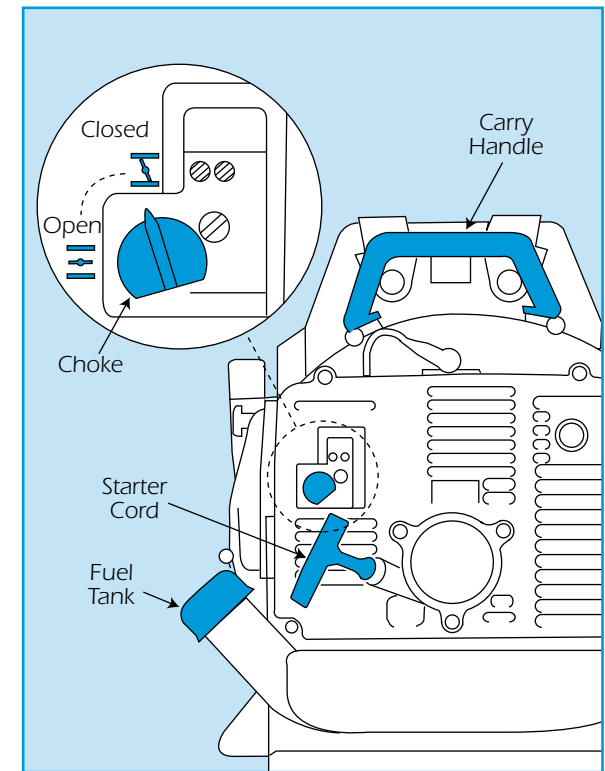
Mix 2-stroke oil with unleaded petrol in a suitable container, as directed on the sachet, and fill the fuel tank. Never add oil and petrol to the tank unmixed.

The engine is controlled by the joystick, which has an ON/OFF switch, a normal throttle trigger and fixed throttle control.



The fixed throttle control allows you to set the engine speed without having to hold the throttle trigger. The control can be set between idle and full throttle. If you wish to use the normal throttle trigger set the fixed throttle control at its lowest position (see illustration).

Turn the ON/OFF switch to the ON position and, if starting from cold, fully close the choke. Now, set the fixed throttle control half on.

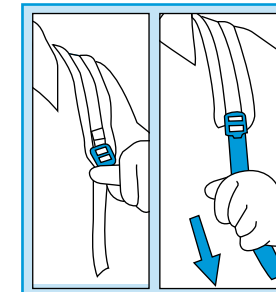


Next pull the starter cord a few times until the motor 'coughs', fully open the choke and pull the starter cord once more. The motor should start.

If restarting after a short break, you need only set the choke half open. If the engine floods, fully open the choke, lock the throttle full on, then pull the starter cord repeatedly until the engine fires.

Once the engine has warmed up, and set the fixed throttle control to the low position to leave the engine idling.

BASIC TECHNIQUES



Lift the machine up and place the harness straps on your shoulder, pull the ends of the straps down to tighten then adjusting as necessary for comfort.

Take the joystick in your right hand and either set the fixed throttle control to full throttle or if you wish to have more

control, squeeze the throttle trigger to bring the engine up to maximum speed.