

If possible, **drape the tool's flex over one shoulder to keep it clear of the chisel**, but **make sure there is still enough slack** so you are not restricted in movement.

On first contact with the surface, the Wall Tile Remover/chisel will try to wander off line. Take great care until you become familiar with the tool.

Begin slowly, allowing the chisel to mark the surface, this will stop the chisel from wandering over the work surface and causing unnecessary and expensive damage.

Never apply too much pressure, let the Wall Tile Remover work at its own pace.

Lift it clear before turning OFF, and wait for moving parts to stop before putting it aside.

If the chisel becomes jammed in the work DO NOT use the Wall Tile Remover as a lever. Tease the chisel from the work by pushing then pulling.

If the chisel strikes a hidden object, stop the machine immediately then check to make sure it is safe to continue.

Where possible, **concentrate on weak spots in the structure you are breaking – top tile edges, cracks etc.**

Take your time, rushing a job tends to produce poor results and increases the risk of a serious accident.

Don't over do it – you are more likely to have an accident if you are suffering from fatigue.

EQUIPMENT CARE

Never push the machine beyond its design limits. If it will not do the job you want with reasonable ease, change it for a more powerful model.

Keep the equipment clean, you will find this less of a chore if you clean up regularly rather than wait until the end of the hire period.

Never let the motor overheat. Stop work at frequent intervals and run the unit for a minute or so, just holding it in your hands. The air drawn in and around it will cool everything down and prevent damage.

Regularly check that the air vents in the machine's body are clear. If these become blocked with dust, isolate the unit from its power supply. Clean them out using a soft brush before continuing, taking care not to push dirt into the drill body.

Avoid hitting or dropping the machine, a heavy blow will damage its casing.

When not in use, **store the equipment somewhere clean, dry and safe** from thieves.

FINISHING OFF

Remove the chisel and give the machine a final clean.

Where applicable, remove the side handle, neatly coil the flex and place in the carrying case ready for return to your local HSS Hire Shop.



...any comments?

If you have any suggestions to enable us to improve the information within this guide please fax your comments or write to the Product Manager at the address below

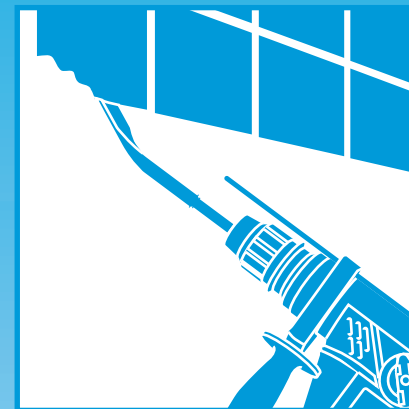
Fax: 0181-687 5001

©HSS Hire Service Group Plc 1998 No. 862/01

Group Office: 25 Willow Lane, Mitcham, Surrey CR4 4TS

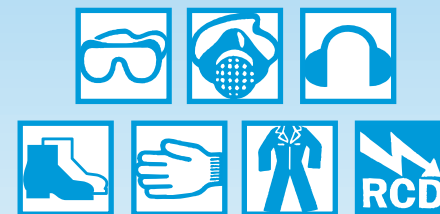
Web Site: <http://www.hss.co.uk>

HSS Hire Shops



Wall Tile Remover

For the fast, effective removal of wall tiles and plaster.




GENERAL SAFETY

For advice on the safety and suitability of this equipment contact your local HSS Hire Shop.


There is a serious risk of personal injury if you do not follow all instructions laid down in this guide.


This equipment should be used by an able bodied, competent adult who has read and understood these instructions. Anyone with either a temporary or permanent disability, should seek expert advice before using it.

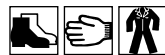
Keep children, animals and bystanders away from the work area.

 **Never use this equipment if you are ill, feeling tired, or under the influence of alcohol or drugs.**

 **Safety Goggles MUST be worn by everyone in the work area.**

 **Some materials being removed by this process may contain substances that, when inhaled, can be harmful to health. A suitable mask must be worn when using this equipment.**

 **This equipment generates potentially harmful noise levels. To comply with health and safety at work regulations, ear defenders must be worn by everyone in the vicinity.**

 **Wear practical, protective clothing, gloves and footwear.** Avoid loose garments and jewellery that could catch in moving parts, tie back long hair.

Ensure the work area is well lit and ventilated.

Never use the equipment if highly flammable vapours – petrol or paint thinner fumes for example – are present.

Always switch OFF the equipment when not in use.

Check the condition of the equipment before use. If it shows signs of damage or excessive wear, return it to your local HSS Hire Shop.

Never lift or pull the equipment by its power supply cable.

Make sure you know how to switch this machine OFF before you switch it ON, in case you get into difficulty.

Take special care when removing tiles from walls, they may be hiding pipework. If in doubt, hire a metal locator, to determine the exact position of such hazards.

Stop the machine and rest a while if you experience discomfort or numbness during use.

Watch your footing. Take special care if working other than on firm, level ground.

ELECTRICAL SAFETY


Most HSS Wall Tile Removers plug into a standard 240v 13amp power socket. However, 110v models (with a round yellow plug) must be provided with a suitable 110v generated supply, or powered from the mains via a suitable 110v transformer.

If the equipment fails, or if its power supply cable or plug becomes damaged, return it. Never try to repair it yourself.

Keep cables out of harm's way, and clear of the work area.

Extension leads should be fully unwound and loosely coiled, away from the equipment. Never run them through water, over sharp edges or where they could trip someone.

Keep the equipment dry, using electrical equipment in very damp or wet conditions can be dangerous.

 **To reduce the risk of electric shock, use a suitable RCD (Residual Current-Operated Device)** available from your local HSS Hire Shop. Or power the equipment from a mains circuit with a built in RCD.

Ensure the machine and power socket are switched OFF before plugging into the power supply.

GETTING STARTED

Fit the Wall Tile Remover with the correct type of chisel for the job.

There is the choice of either a straight shank or offset shank chisel. Use the straight shank for standard work and the offset when the machine needs to be at a slight angle away from the surface.

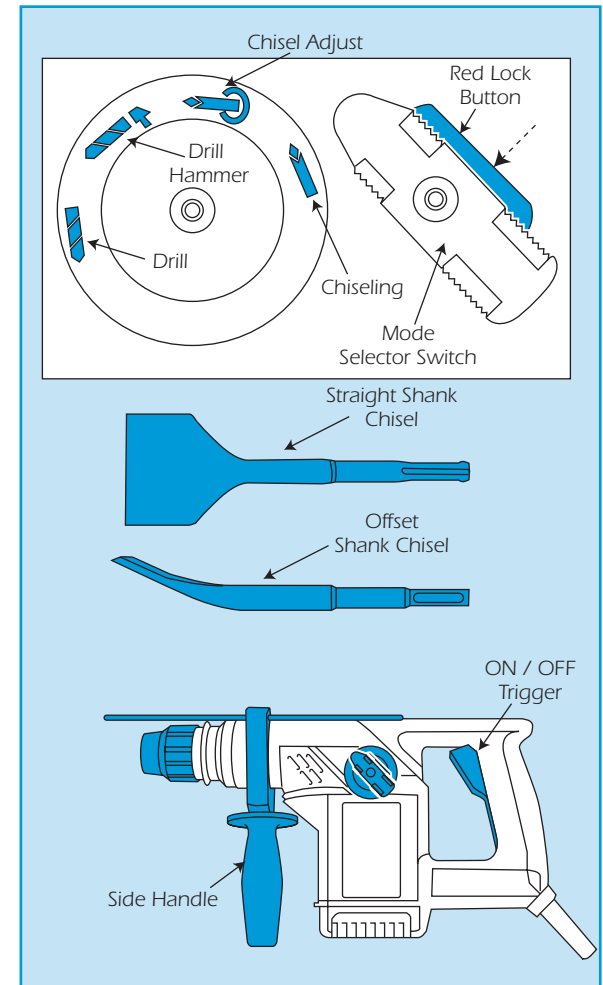
Always clean the chisel shank before fitting it or dirt could build up in the chuck and damage it.

Open the chuck jaws by turning the outer sleeve anticlockwise. Insert and twist the chisel as far as it will go, once in position, turn the outer sleeve clockwise to lock the chisel in position.

Take care, **never force the chisel in.** If the fit is at all tight, return the equipment to us.

Mode Selection Warning

This machine can also be used as a rotary/rotary hammer drill. It is most important that the selector lever is only set to the drill / hammer drill icons if you have fitted an SDS drill bit. If a chisel is fitted and the rotary action is selected, the chisel will rotate and could cause serious personal injury.



To change the angle of the chisel press the red lock button and move the selector lever to the 'chisel adjust' icon. The chisel is now free to rotate to the required angle. **To lock the position and set the machine ready to work, turn the selector to the 'chiselling' icon.**

BASIC TECHNIQUES

Plug the machine into its power supply and switch the supply ON.

To start the Wall Tile Remover, squeeze in the ON/OFF trigger, to stop simply release the trigger. Hold the tool in both hands and adopt a stable stance that gives a good view of the work while keeping you clear of the bit.

Do not work in areas where you are forced to stand on loose debris or on a slippery uneven surface.