

BASIC TECHNIQUES

When loading and unloading, **make sure that the weight is evenly distributed on the pallet** so as not to over balance the load. And **avoid piling the load up too high**, it could topple.

Switch the unit ON and walk to the side of the unit.

When walking with the unit, **do not walk backward always face the direction of travel.**

Position yourself to the side of the unit so that you remain clear of the units intended path.

Pay special attention to the position of your feet, legs and body to ensure that you don't accidentally entrap or run over yourself.

Lower the control arm and drive the unit to the pallet. Centre the forks under the load and press the fork elevation switch to lift the pallet.

Raise the pallet just enough to clear the floor.

The powered pallet truck can now be driven to its destination. For safety reasons, though, it will not turn through angles greater than 180 degrees.

Always **position yourself so you can control the powered pallet truck while staying clear of the raised load.**

Do not allow the unit to travel at speed or change its direction of travel abruptly.

Manoeuvre the unit to where the load is required **and stop the unit from moving by raising the control arm.**

Gently lower the forks until the pallet is fully lowered, then drive the unit clear.

Take your time and don't overdo it. You are more likely to have an accident if you are tired or rushing.

EQUIPMENT CARE

Never push the equipment beyond its design limits. If it will not do what you want with reasonable ease and speed, assume you have the wrong equipment for the job. Contact your local HSS Lift & Shift Depot for advice.

Keep the equipment clean, you will find this less of a chore if you clean it regularly, rather than wait until the end of the hire period.

When not in use, **store the equipment somewhere clean, dry and safe** from thieves and unauthorised users.

FINISHING OFF

Gently **lower the load and then remove it from the forks.**

Give the unit a final clean up ready for return, to your local HSS Lift & Shift Depot.



...any comments?

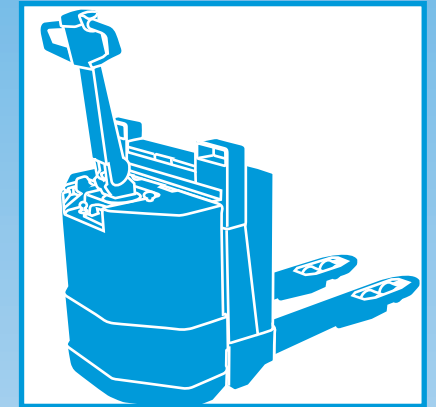
If you have any suggestions to enable us to improve the information within this guide please fax your comments or write to the Product Manager at the address below

Fax: 020 8687 5001

©HSS Hire Service Group Plc 2001 No. LS104/01
Group Office: 25 Willow Lane, Mitcham, Surrey CR4 4TS

Web Site: <http://www.hss.co.uk/liftandshift>

HSS Lift & Shift



Powered Pallet Truck

Makes light work of moving loaded pallets of up to 2,000kg.



Code 70233

GENERAL SAFETY

For advice on the safety and suitability of this equipment contact your local HSS Lift & Shift Depot.


There is a serious risk of personal injury if you do not follow all instructions laid down in this guide.


The hirer has a responsibility to ensure that all necessary risk assessments have been completed prior to the use of this equipment.


This equipment should only be used by a suitably trained operator who has been deemed competent to do so by his/her employer.


This equipment is designed to be used by an able bodied, competent adult who has read and understood these instructions. Anyone with either a temporary or permanent disability should seek expert advice before using it.

Keep children, animals and bystanders away from the work area. Cordon off a NO GO area using cones and either barriers or tape, available for hire from your local HSS Lift & Shift Depot.

 Never use this equipment if you are ill, feeling tired, or under the influence of alcohol or drugs.

 Wear practical, protective clothing, gloves, footwear and a protective hard hat. Avoid loose garments and jewellery that could catch in moving parts, tie back long hair.

 Use this equipment for vertical lifts only and use on a level area able to take the combined weight of the load and the equipment.

 Ensure the load is balanced, stable and that personnel stand clear of the raised load.

Make sure you know how to operate this equipment safely and are aware of its limitations before you use it.

Make sure that anyone in the immediate work area is warned of what you are doing.

Never exceed the equipment's safe working load of 2,000kg.

Safety Warning

This equipment **MUST NOT** be used to carry or lift personnel.

Do not use this equipment to raise items, which are longer than the fork. Ensure the load has a flat base or if not, is either attached to a suitable pallet or specially designed attachment.

Gradients

This equipment may be driven on a gradient provided the following rules are applied.

1. The maximum gradient must not exceed 8%.
2. Never transverse the gradient IE; you may drive the unit up or down a gradient BUT NOT ACROSS it.
3. Never leave the unit unattended when on a gradient.

When moving loads keep to a sensible pace. If you go too fast, or if you try to wheel a heavy load down a slope, it could run away with you.

Never leave a load unattended.

Check the condition of the equipment before use. If it shows signs of damage or excessive wear, return it to your local HSS Lift & Shift Depot.

ELECTRICAL SAFETY

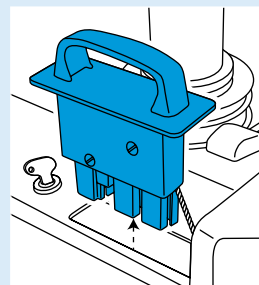
The HSS powered pallet truck is powered by a 24V battery. The battery is fitted to the unit and the charger is built in.

The battery charger is designed to plug into a standard 230V 13A earthed power supply

If an extension lead is used for the charger it should be fully unwound and loosely coiled, away from the equipment. Never run leads through water, over sharp edges or where they could trip someone.

Only recharge the batteries in a well-ventilated area. Keep the charging area clear of naked flames, DO NOT SMOKE.

Emergency Procedure



The unit is fitted with a battery disconnect system which will disconnect the battery from the unit in case of an emergency.

If a situation should occur where the unit needs to be isolated from its power supply, take a firm grip of the battery disconnect handle and pull it clear.

Before the battery disconnect system is replaced, ensure that the unit is switched OFF.


To recharge the battery make sure the unit is switched OFF then plug the charger's plug (see illustration) into a suitable power supply and switch the supply ON.

The charger will recharge the battery in approximately 8 hours.

Once fully charged, switch OFF and unplug the unit from its power supply.

There is a built in safety system which stops the unit working if the plug is not correctly replaced into its storage point. Make sure that you replace the plug securely otherwise the unit will not work.

Charging the unit in very damp or wet conditions can be dangerous.

 To reduce the risk of electric shock, use a suitable RCD (Residual Current-Operated Device) available from your local HSS Lift & Shift Depot.

If the charger fails, or if the charger's power supply cable or plug gets damaged, return it. Never try to repair it yourself.

GETTING STARTED

DO NOT use on soft ground or where there is a risk of subsidence.

Make sure that you are completely familiar with the pallet truck's controls before attempting to use it.

The unit is steered by the main control arm, which also houses the warning horn button, the drive switches, the fork elevation controls and an auto reverse safety plate.

There is a thumb operated rocker switch fitted to both left and right-hand controlled handles. The thumb rocker switch is used to control the direction and speed of travel.

Raise the thumb switch to travel backward and lower to travel forward. The further the switch is moved, the faster the unit will travel.

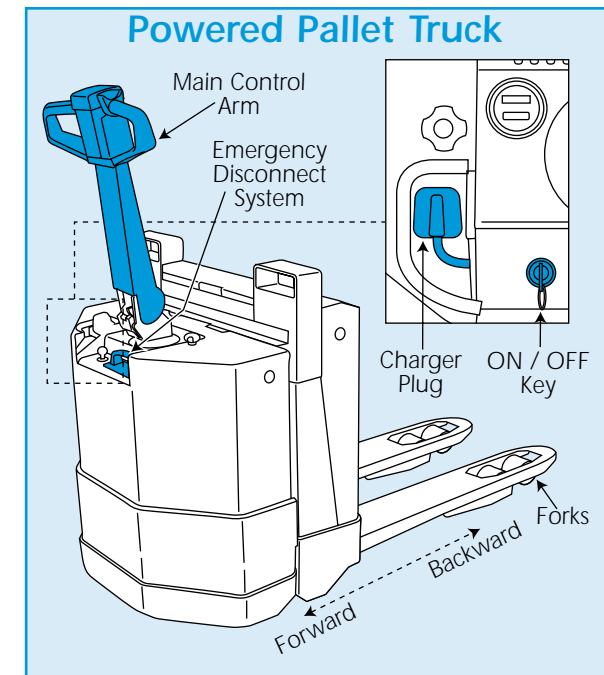
To raise the forks, press the fork elevation rocker switch back until the pallet is clear of the ground (see illustration).

To lower the forks, press the fork elevation rocker switch forward until the pallet is fully lowered.

Be especially careful when lowering and keep your hands and feet clear of the load.

The main control arm controls the brakes and is also used to steer the unit.

Before the unit can be driven, you must lower the main control arm to release the brakes, but be aware that the brakes can also be activated by fully lowering and holding the arm.



The auto reverse safety plate, fitted to the end of the control arm, immediately sends the unit backward if depressed. This device safeguards against the operator being trapped between an obstacle and the unit.

Finally, to switch the unit ON turn the key clockwise, to switch the unit OFF turn the key anti-clockwise.

