

Next, set the water control to 'OFF' if the fan only is required or progressively anti-clockwise towards 'ON' to increase the cooling effect. There is an airflow direction control on the front grill, to aim the flow in the required direction.

#### Control Type 2...

Turn the ON/OFF/Fan speed control to give the desired airflow. This dial also switches the unit OFF when set to 'OFF'.

Next, raise the water flow lever to stop any water flow if the fan only is required or lower the lever for a cooling effect.

There are two airflow direction controls. The airflow up/down control lever manually sets the vertical airflow. The vertical swing controls is a powered system which moves the deflectors from left to right continuously when set to ON.

If you need the air to be sent in one direction, set the louver ON then OFF once in the required position.

#### Control Type 3...

Turn the 3-speed fan control to give the desired airflow. Next, set the water control anti-clockwise if the fan only is required or progressively clockwise to increase the cooling effect.

#### Control Type 4...

Turn the fan control anti-clockwise for fan only (3 speed settings), and clockwise for fan with cooling (3 settings).

All Models...

**NOTE:** Full fan and full water flow will act as a humidifier, placing moisture back into the air.

## EQUIPMENT CARE

Never use a cooler except for its intended purpose.

If it will not do what you want with reasonable ease and speed, assume you have the wrong type of cooler for the job. Contact your local HSS Hire for advice.

**Keep the equipment clean** - you will find this less of a chore if you clean it regularly, rather than wait until the end of the hire period.

### Water Reservoir

Because the HSS Evaporative Coolers have a reservoir of water, which cannot be emptied safely by the user, it is important that the unit is not stored for more than 2 days without being used. If the unit is required but not used for 2 days, either run the unit for 1 hour in every 24 or dispense two capfuls (50ML) of sterilising solution (NOT BLEACH) with the next fill of water.

When not in use, store the equipment somewhere clean, dry and safe from thieves. Protect this equipment from frost and freezing conditions.

## FINISHING OFF

Set the controls to fan only and let the unit run for 10 minutes to dry the water pads. Switch the unit OFF and give it a final clean up ready for return, to your local HSS Hire.



### ... have you been trained

The law requires that personnel using work equipment have received adequate training and must be competent when using the equipment within the workplace. Training is available at HSS Training Solutions 0845 766 7799

### ...any comments?

If you have any suggestions to enable us to improve the information within this guide please e-mail your comments or write to the Safety Guide Manager at the address below e-mail: [safety@hss.com](mailto:safety@hss.com)

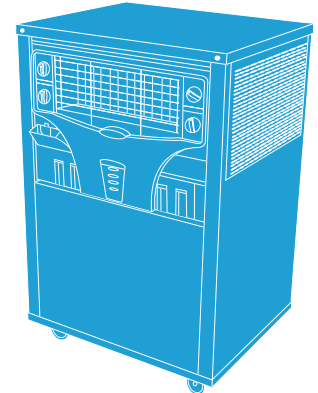
©HSS Hire Service Group Ltd 2008 No. 612/03

Group Office: 25 Willow Lane, Mitcham, Surrey CR4 4TS

Web Site: <http://www.hss.co.uk>

612/03

## Operating & Safety Guide 612



# Evaporative Coolers

Fan assisted cooler/humidifier, using the cooling effect of water evaporation



Code 56772/56781/56782

## GENERAL SAFETY

For advice on the safety and suitability of this equipment contact your local HSS Hire.

There is a serious risk of personal injury if you do not follow all instructions laid down in this guide.

The hirer has a responsibility to ensure that all necessary risk assessments have been completed prior to the use of this equipment.

This equipment should only be used by an operator who has been deemed competent to do so by his/her employer.

This equipment should be used by an able bodied, competent adult who has read and understood these instructions. Anyone with either a temporary or permanent disability, should seek expert advice before using it.

Keep children, animals and bystanders away from the work area. Cordon off a NO GO area using either cones, barriers or tape, available for hire from your local HSS Hire.



Never use this equipment if you are ill, feeling tired, or under the influence of alcohol or drugs.



This equipment is heavy, never attempt to lift it on your own, always get help. Never lift or move this equipment by its power supply cable.

Never place anything on top of a cooler and never obstruct its air vents. Leave a 300mm gap all round to let air circulate.

Pay special attention to the drain hose and tap, regularly check for leaks. Failure to do this may cause expensive damage to carpets and other floor coverings.

Always switch OFF and unplug the equipment when not in use.

Ensure the work area is well lit and ventilated, if in doubt, ask about lighting and ventilation equipment at your local HSS Hire.

Check the condition of the equipment before use.

If it shows signs of damage or excessive wear, return it to your local HSS Hire.

## ELECTRICAL SAFETY

The HSS Evaporative Coolers plug into a standard 230V 13amp power socket.

If the equipment fails, or if its power supply cable or plug becomes damaged, return it. Never try to repair it yourself.

Keep cables out of harm's way, and clear of the work area.

Extension leads should be fully unwound and loosely coiled, away from the equipment. Never run them through water, over sharp edges or where they could trip someone.

Keep the equipment dry, using electrical equipment in very damp or wet conditions can be dangerous.



To reduce the risk of electrical shock, always use a suitable RCD (Residual Current-Operated Device) available from your local HSS Hire. Or power the equipment from a mains circuit with a built in RCD. Ensure the machine and power socket are switched OFF before plugging into the power supply.

## GETTING STARTED

It is essential to familiarise yourself with all the controls before starting.

Set the equipment up on a firm level surface in a room where both windows and doors can remain open.

To cool a room efficiently the unit requires a continuous supply of fresh air and must be positioned close to an open window or outside door.

You must also have another window or door open for the warm air to exit.

Fill the unit with clean fresh water. The fill point will be found either on the top, rear or the front of the cooler and observe the water level indicator, fill until it is at the top.

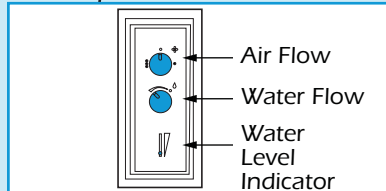
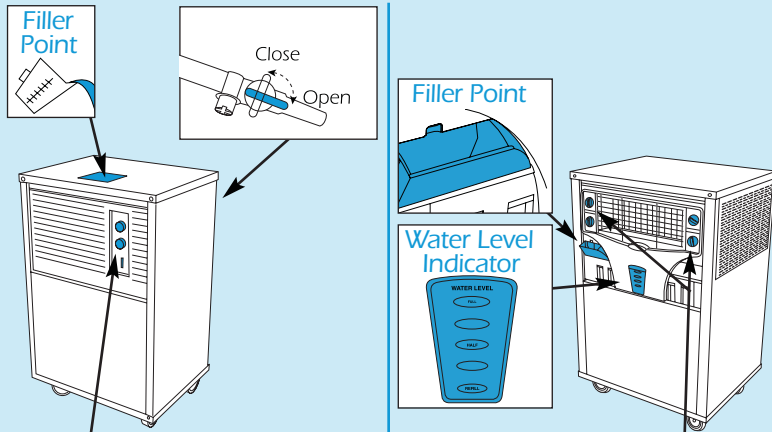
Plug the unit into its power supply and switch the supply ON.

Each illustration is marked with a control type number. Check which model you have hired and follow the respective instruction.

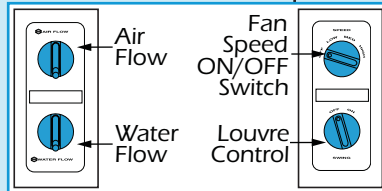
Control Type 1...

Turn the 3-speed fan control to give the desired airflow. This dial also switches the unit OFF when set to '0'.

### Industrial Coolers

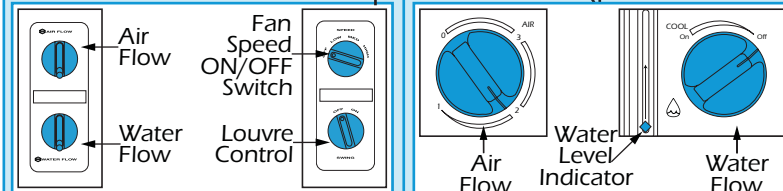
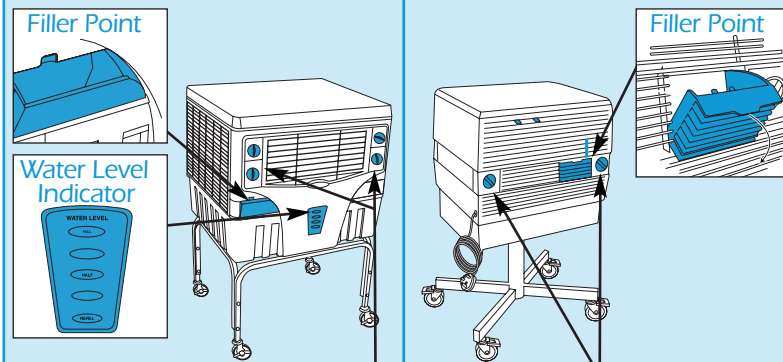


Control Type 3

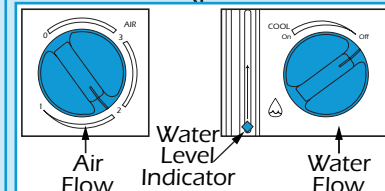


Control Type 2

### Large Office Coolers

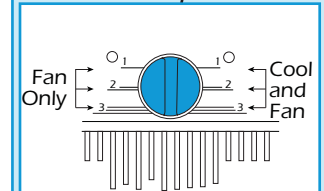
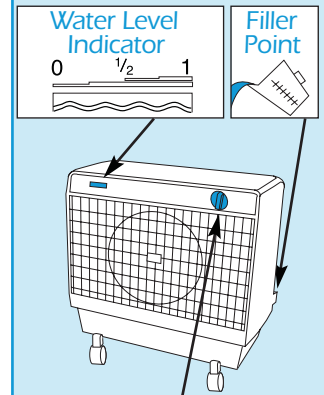


Control Type 2



Control Type 1

### Compact Office Cooler



Control Type 4