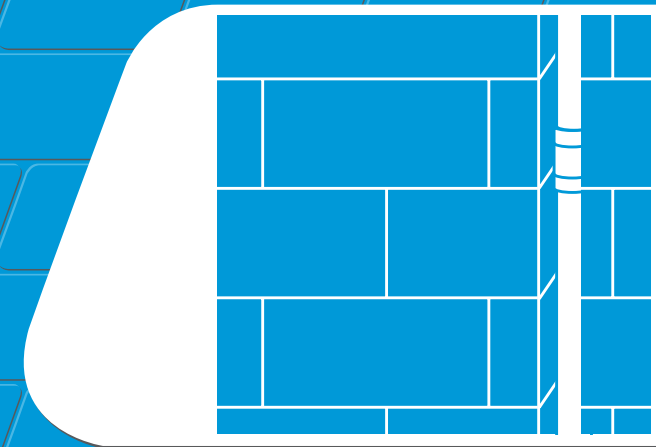
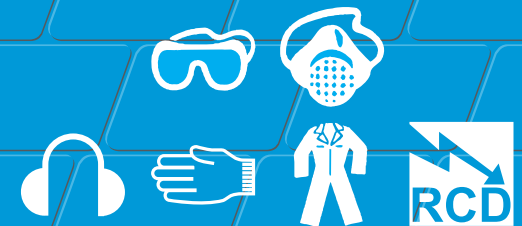


# HSS Hire



## Heavy Duty Wall Chaser

Takes the hard work and the guesswork out of cutting channels for pipes, conduits and cables in plaster, masonry and concrete.



Code 08331

### EQUIPMENT CARE

Never try to push the equipment beyond its design limits. If it will not do what you want with reasonable speed and ease, assume it is the wrong equipment for the job. Ask at your local HSS Hire for advice.

Keep the equipment clean. This is less of a chore if you clean up regularly rather than waiting until the end of the hire period.

If working with very dusty materials, stop and clean up more frequently, paying special attention to air intakes on the electric motor.

When not in use, store the equipment somewhere clean, dry and safe from thieves.

### FINISHING OFF

Switch the machine OFF, then give it a final clean, neatly coil the cable ready for return to your local HSS Hire.

### Disc Safety

Diamond discs can be dangerous if handled incorrectly or fitted wrongly, so, be sure you know how to use them properly. Refer to the separate safety leaflet supplied.

### ... have you been trained

The law requires that personnel using this type of equipment must be competent and qualified to do so. Training is available at HSS Training Solutions  
0845 766 7799

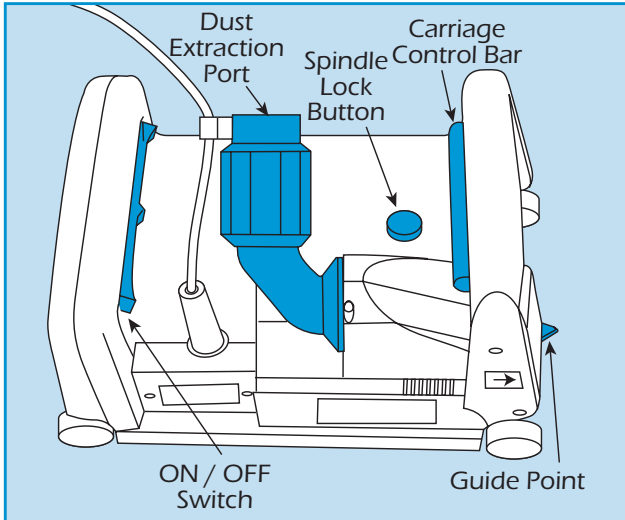
### ...any comments?

If you have any suggestions to enable us to improve the information within this guide please e-mail your comments or write to the Safety Guide Manager at the address below  
e-mail: [safety@hss.com](mailto:safety@hss.com)



©HSS Hire Service Group Ltd 2007 No. 732/02  
Group Office: 25 Willow Lane, Mitcham, Surrey CR4 4TS

Web Site: <http://www.hss.com>



Note that, regardless of chase width, you must replace all the spacer washers.

For a non-standard chase width, remove the second wheel completely. Each side of the chase can then be cut separately using the inner wheel.

Swing the side guard back down, and refit the main unit to the baseplate, simply press them together until the carriage lock button engages.

The final job is to set the chase depth using the sliding depth stop on the metal plunge guide.

For a better working environment, fit a dust extraction unit to the wall chaser. Available from your local HSS Hire.

### BASIC TECHNIQUES

To switch ON, push the ON/OFF switch sideways and press. To switch OFF simply release the switch.

To make a chase, (switch ON any dust extraction unit fitted) hold the base plate flat against the wall with the discs clear of the surface.

Switch the unit ON, wait for the wheels to reach operating speed then lower the wheels by pressing and holding the carriage control bar so they cut into the wall until checked by the depth stop.

Now, guide the tool forward using the guide point on the tool's front edge as a guide – the guide point shows the position of the inner wheel.

At the end of the chase, release the carriage control bar, lift the wheels clear of the masonry and switch OFF.

Let the tool do the work – don't try to force it through the material.

Keep the tool and/or work steady and keep the cut straight. Do not allow the disc to twist in the cut.

## GENERAL SAFETY

For advice on the safety and suitability of this equipment contact your local HSS Hire.


Keep children, animals and bystanders away from the work area.


Never use this equipment if you are ill, feeling tired, or under the influence of alcohol or drugs.


This equipment should only be used by a competent person who has read and understood these instructions.

There is a serious risk of personal injury if you do not follow all instructions laid down in this guide.

 Safety Goggles **MUST** be worn by everyone in the work area.

 Some materials when cut contain substances which, when inhaled, can be harmful to health. A suitable mask must be worn when using this equipment.

 This equipment generates potentially harmful noise levels. To comply with health and safety at work regulations, ear defenders must be worn by everyone in the vicinity.

 Wear practical, protective clothing, gloves and footwear. Avoid loose garments and jewellery that could catch in moving parts, tie back long hair.

Make sure you keep your hands clear of the blade at all times, don't be fooled! the diamond blade is of a smooth appearance, but it can still cut you.

Ensure the work area is well lit and ventilated, if in doubt, ask about dust extraction and ventilation equipment at your local HSS Hire.

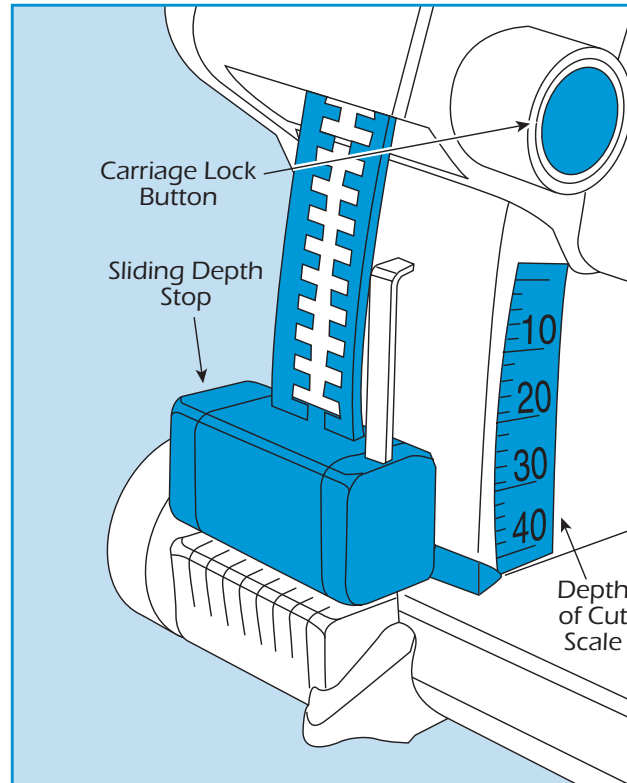
Do not work near flammable gases or liquids, petrol or paint thinner fumes for example. Keep combustible materials at a safe distance – at least 5m.

If working above ground-level, work from a suitable, stable platform – an access tower for example. Never work from ladders or steps.

Take special care when cutting into anything containing pipework or electrical cables. If in doubt, hire a cable avoiding tool or metal locator from your local HSS Hire, to determine the exact position of such hazards.

Make sure you know how to switch this machine OFF before you switch it ON in case you get into difficulty.

Always switch OFF and unplug the tool before making adjustments to it. Check that you have removed all spanners and replaced the guard before plugging it back in.



Having switched OFF, always wait for the wheels to come to rest before putting the tool down.

Never carry or pull the equipment by its flex.

Check the condition of the equipment before use. If it shows signs of damage or excessive wear, return it to your local HSS Hire.

Watch your footing. Take special care if working other than on firm, level ground.

## ELECTRICAL SAFETY


Most HSS wall chasers plug into a standard 13amp power socket. However, 110V models (with a round yellow plug) must be provided with a suitable 110V generated supply, or powered from the mains via a suitable 110V transformer (minimum 2kVA tool rating).

If the equipment fails, or if its flex or plug gets damaged, return it. Never try to repair it yourself.

Keep flexes out of harm's way, and clear of the work area.

Extension leads should be fully unwound and loosely coiled, away from the equipment. Never run them through water, over sharp edges or where they could trip someone.

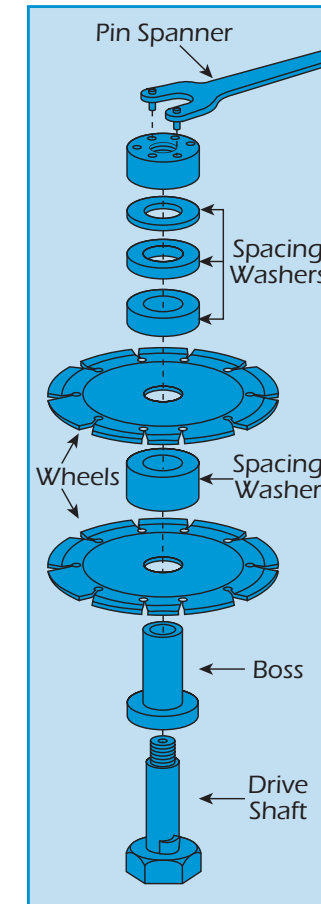
Keep the equipment dry, using electrical equipment in very damp or wet conditions can be dangerous.

 To reduce the risk of electric shock, use a suitable RCD (Residual Current-Operated Device) available from your local HSS Hire, or power the equipment from a mains circuit with a built-in RCD.

If using a transformer to provide power, ensure that the total power load is less than 75% of the unit's power rating.

Ensure the wall chaser and power socket are switched OFF before plugging into the power supply.

## GETTING STARTED



Before plugging in and switching ON, set the required chase width.

To do this, lay the machine on its side, press the carriage lock button to separate the main unit from the base plate, then swing the side guard up to reveal the drive shaft and wheels.

Push in and hold the spindle lock button, then undo the lock nut (anti-clockwise) with the pin spanner provided and remove the entire assembly.

The cutter assembly comprises of a central boss over which are held the 2 diamond cutting wheels and 4 spacing washers, each of a different thickness.

To re-assemble to the width you require, first place the inner wheel on the central boss, ensuring the arrows on the wheel and the tool body point in

the same direction, (anti-clockwise if viewed from the side).

Next place the spacing washers which together create the correct distance between wheels. The spacers are 3, 6, 13 and 21mm thick. This allows a spacing of; 3, 9, 16, 19, 21, 22, 24, 30, 34, 37, 40 and 43mm + 4mm for the two wheels.

Now all that remains is to place the outer wheel then the remaining spacers onto the central boss and re-fit the entire assembly ensuring the lock nut is securely fitted.