

Adopt a comfortable, stable stance when working – one that gives a good view of whatever you are working on. It's easier, safer and gives better results.

Keep the whole of your body clear of the saw blade at all times. Take special care if standing anywhere other than on a firm, level footing.

Let the tool do the work. Apply just enough pressure to ensure reasonable progress. Forcing it into the work increases the risk of the blade becoming jammed.

Take your time. Rushing a job tends to produce poor results and increases the risk of serious accident.

Take regular breaks and don't over do it. You are more likely to have an accident if you are suffering from fatigue.

If you experience numbness or discomfort during use, stop work and take a break.

Always keep the saw's sole-plate in contact with the work when sawing, even on corrugated materials.

Take special care when cutting curves and angles not to force the saw around the turn or the blade may jam in the cut.

As you near the end of a cut, make sure the off-cut is adequately supported. You will get a better finish and there is less risk of the blade getting jammed.

In a Jam?

If the blade should jam in the cut, switch OFF and remove the battery pack immediately. In most cases, you can now work the blade free quite easily. However, if a lot of force is required, don't use the tool's body as a lever. Release the blade from the saw's chuck and remove it with a pair of pliers.

Lopping Branches?

If using the saw to lop off tree branches, begin by making a small cut on the underside of the branch, then cut downward towards this from the top. You will find the branch comes away far more cleanly. But take care! Always work from a stable platform and avoid over-reaching.

When you have finished, simply withdraw the saw from the workpiece with the motor running, now switch OFF and remove the battery pack.

EQUIPMENT CARE

Never push the equipment beyond its design limits. If it will not do what you want with reasonable ease, assume you have the wrong tool for the job. Contact your local HSS Hire Shop for advice.

If you are cutting material containing nails, screws and so on, use an all-purpose blade. Even so, take care! The blade may behave unpredictably.

Handle the equipment with care. Avoid dropping it, knocking it, or otherwise exposing it to damage.

Avoid sawing continuously for long periods. From time to time, run the tool with the blade clear of the work to allow the blade to cool.

Never expose the equipment to dangerous and/or corrosive chemicals.

Keep the equipment clean. You will find this less of a chore if you clean up regularly, rather than wait until the end of the hire period.

When not in use, store the equipment somewhere clean, dry and safe from thieves.

FINISHING OFF

Release the saw's trigger, apply the trigger safety-lock, wait for the blade to stop then remove the battery pack before putting the saw down.

Remove the used saw blade by simply opening the saw's chuck with the key provided and pulling it out of the jaws.

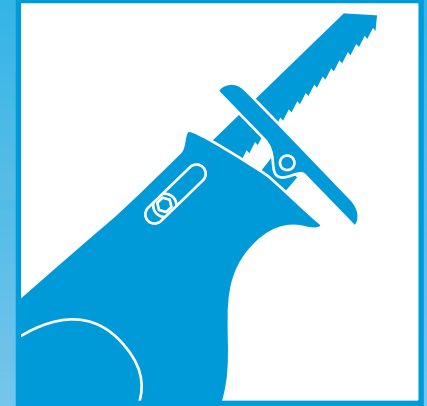
Finally, **clean the equipment with a damp cloth** (never use cleaning agents) ready for return to your local HSS Hire Shop.



©HSS Hire Service Group Plc 1998 No. 821/01
Group Office: 25 Willow Lane, Mitcham, Surrey CR4 4TS

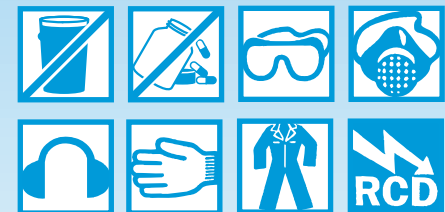
Operating & Safety Guide 821

HSS Hire Shops



Cordless Reciprocating Saw

A battery operated, heavy duty reciprocating saw for cutting metal, wood and plastic.



Code 03123



GENERAL SAFETY

For advice on the safety and suitability of this equipment, contact your local HSS Hire Shop.

There is a serious risk of personal injury if you do not follow the instructions set out in this Guide.


Check the equipment before use. If it shows signs of damage or excessive wear, return it.


Keep children, animals and bystanders away from the work area.

  Never use this equipment if you are feeling tired, ill, or under the influence of alcohol or drugs.

This equipment should be used only by an able-bodied, competent adult who has read and understood these instructions. Anyone with either a temporary or permanent disability should seek expert advice before using it.

 Safety goggles MUST be worn by everyone in the work area while the equipment is in use.

 Some materials, when cut, produce substances which, if inhaled, can be harmful to health. A suitable mask must be worn when using this equipment.

 This equipment generates potentially harmful noise levels. To comply with Health & Safety at Work regulations, ear defenders must be worn by everyone in the vicinity.

  Suitable protective clothing, footwear and gloves must be worn. Tie back long hair and avoid loose garments and jewellery that could interfere with the work.

Never use the saw to cut asbestos sheeting or any other material which may be hazardous to health.

Ensure the work area is well lit and well ventilated. Never use the equipment near combustible materials or in potentially explosive atmospheres.

If working above ground-level, always work from a suitably stable work-platform, such as an access tower. Do not work from ladders or steps.

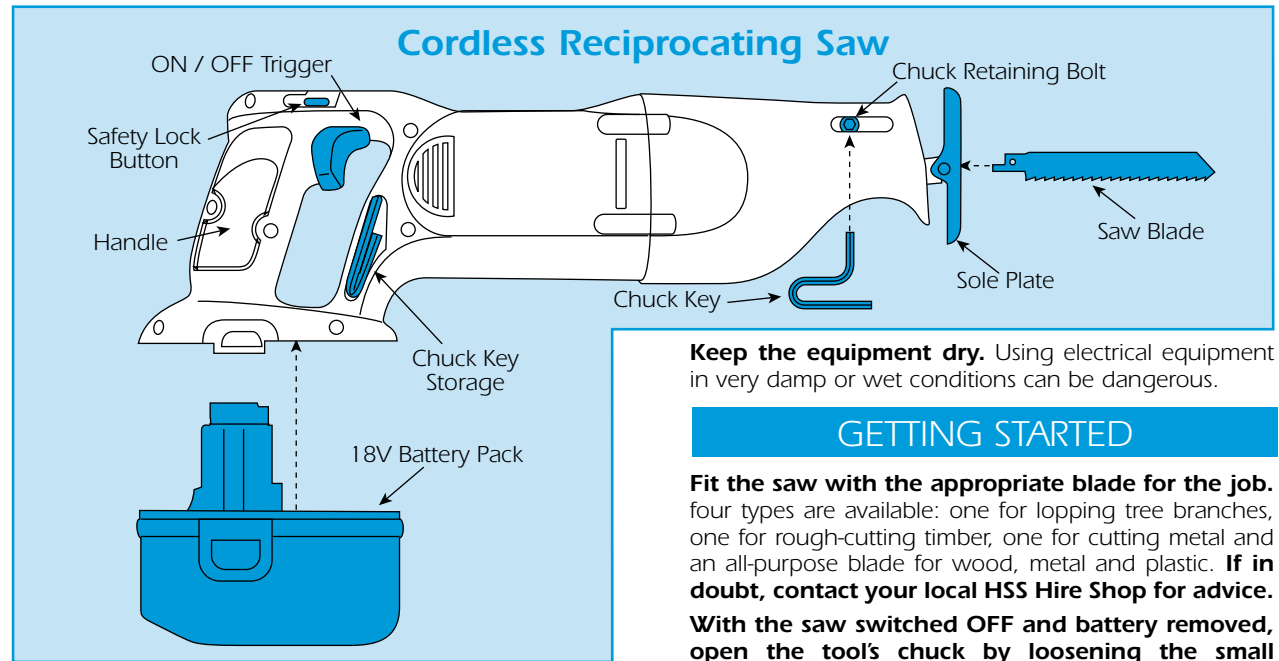
Make sure you know how to switch this machine OFF before you switch it ON, in case you get into difficulty.

Always SWITCH OFF and remove the battery before changing blades or carrying the equipment. Never leave it switched on and unattended.

Having switched OFF the tool, always wait for the blade to stop before putting it down.

Never carry or pull the charger by its flex.

Take care when handling saw blades. They are SHARP! Ensure the equipment is switched OFF before inserting the battery pack.



Keep the equipment dry. Using electrical equipment in very damp or wet conditions can be dangerous.

GETTING STARTED

Fit the saw with the appropriate blade for the job. Four types are available: one for lopping tree branches, one for rough-cutting timber, one for cutting metal and an all-purpose blade for wood, metal and plastic. **If in doubt, contact your local HSS Hire Shop for advice.**

With the saw switched OFF and battery removed, open the tool's chuck by loosening the small hexbolt with the key provided. You'll find it clipped into the tool's body near the handle.

Now, slide the saw blade into the chuck jaws, until the hole in the blade is under the chuck's retaining pin, and retighten the hexbolt, remembering to replace the chuck-key in its housing when you've finished.

Always double-check that the blade is firmly in place before attempting to use the saw.

Where appropriate, you should now secure the work in a suitable vice or with clamps. Make sure the saw blade will not be obstructed and that sheet materials and long off-cuts are adequately supported to minimise vibration and splintering.

To switch ON, insert the battery pack into the tool. Now press the trigger's safety-lock button and squeeze the trigger. To switch OFF, simply release the trigger and return the safety-lock button to its original position.

Never start the saw with its blade in contact with the workpiece.

To start a cut away from the edge of the workpiece, simply drill a hole in the waste large enough to take the blade, then saw outward from the hole in the normal way.

BASIC TECHNIQUES


Hold the machine with both hands. Make sure the handles are free from grease and oil.

ELECTRICAL SAFETY

Battery Power

Remove the battery pack when not in use or before making any adjustments to the tool.

This tool is powered by a 18V battery pack, the one hour charger unit is designed to plug into a 240V 13amp power supply.

 To reduce the risk of electric shock, use a suitable RCD (Residual Current Operated Device) available from your local HSS Hire Shop. Alternatively, power the charger from a mains circuit with built in RCD.

If the equipment fails, or the flex or plug of the charger gets damaged, return it. Never attempt to repair it yourself.

Keep the charger's flex out of harm's way and clear of the saw's blade. Never run them through water, over sharp edges or where they might trip someone.

Battery & Charger

