

If using as a hot washer, follow the cold instructions, but set the ON/OFF switch to the flame symbol and the thermostat control to the required temperature.

The following are recommended cleaning temperatures.

- 30 - 50C** – For light dirt.
 - MAX 60C** – For dirt that contains protein, i.e. in the food industry.
 - 60 - 90C** – For cleaning vehicles and machinery.
- Note that vehicle paint work and under seal can be damaged if high temperatures and pressures are used on them.

Also vehicle tyres and valves can be damaged by high pressures. You are therefore advised to keep the spray lance a MINIMUM 1m from tyres and valves.

If a detergent is to be sprayed, set the detergent percentage switch to the required mix. Next reduce the spray pressure, triggering the lance will now draw the chemical into the system automatically.

Pump Performance

A pump's performance depends mainly on a sufficient supply of water. If the pump gives intermittent high and low spray pressure during use, check the inlet hose connections. Look for kinks, damage and secure connection to the pump and mains tap. Also check the water pressure at the tap, in case the pressure has dropped due to other services being supplied. If in doubt, contact your local HSS Hire Shop for advice.

If you then wish to spray without detergent, increase the spray pressure and set the **detergent percentage switch to '0'**. The chemicals will continue for a short while as the residue is cleared.

EQUIPMENT CARE

Never push the equipment beyond its design limits. If it will not do what you want with reasonable ease or within the time required, assume you have the wrong size or type of washer for the job. Ask at your local HSS Hire Shop for advice.

Keep the equipment clean. You will find this less of a chore if you clean up regularly rather than wait until the end of the hire.

When not in use, store the equipment somewhere clean, dry and safe from thieves. **And where it will be protected from frost at all times.**

Handle hoses with care. Never run them over sharp edges or anywhere else that exposes them to the risk of damage.

Keep the machine upright at all times. If it should be tipped over, mop up fuel spillages and contact your local HSS Hire Shop for advice.

Regularly check the burners fuel level and top up as required using the correct fuel: DERV or pink paraffin.

The control panel has 3 warning lights...

If the top lamp illuminates, the motor has over heated. Switch the unit OFF and allow to cool to room temperature, after which you can continue.

If the middle lamp illuminates the burner fuel level is low and(if being used as a hot washer) **MUST** be refilled or the fuel pump will be damaged.

The lower lamp indicates that the water softener fluid is low. The unit can still be used but you are advised to contact your local HSS Hire Shop for advice before proceeding.

FINISHING OFF

Release the lances trigger and lock in the OFF position. Turn the ON/OFF switch to the OFF position and shut off the water supply.

Trigger the lance to drain any remaining water. If you have finished with the unit completely, **disconnect both the pressure and inlet hoses, drain out any water they contain and coil them neatly ready for return to your local HSS Hire Shop.**



...any comments?

If you have any suggestions to enable us to improve the information within this guide please fax your comments or write to the Product Manager at the address below

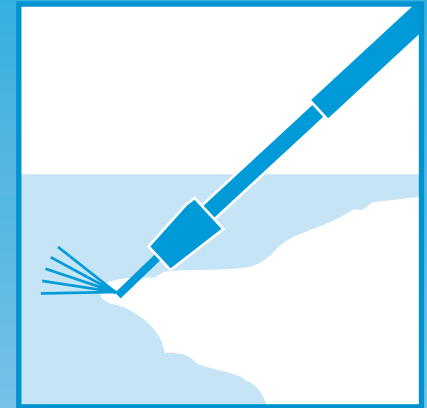
Fax: 020 8687 5001

©HSS Hire Service Group Plc 1998 No. 766/01

Group Office: 25 Willow Lane, Mitcham, Surrey CR4 4TS

Web Site: <http://www.hss.co.uk>

HSS Hire Shops



Electric Hot Washers

Ideal for relay tough cleaning jobs, offering high temperature and high pressure at the same time.



GENERAL SAFETY

For advice on the safety and suitability of this equipment contact your local HSS Store.

There is a serious risk of personal injury if you do not follow all instructions laid down in this guide.

This equipment should be used by an able bodied, competent adult who has read and understood these instructions. Anyone with either a temporary or permanent disability, should seek expert advice before using it.

Keep children, animals and bystanders away from the work area.



Never use this equipment if you are ill, feeling tired, or under the influence of alcohol or drugs.



Safety Goggles MUST be worn by everyone in the work area.



Wear practical, waterproof protective clothing, gloves and footwear. Avoid loose garments and jewellery that could get in the way of the work, tie back long hair.

Exhaust Danger

NEVER operate hot washers indoors or in a confined space.

The exhaust from the burner contains gases that can Kill.

Never carry, lift or pull the equipment by its power supply cable or hoses.

Check the equipment before use. If it shows signs of damage or excessive wear, return it.

Pressure washing equipment can cause serious injury, so take care. Never point the spray lance at anyone and always engage the trigger safety lock when not actually washing.

Never direct the spray at or near anything electrical. Even if this is isolated from its power supply, water penetration may cause problems when you restore the power.

Take care where you lay hoses. Avoid running them where there is a risk of someone tripping over them.

Fuel Safety

NEVER refuel while the unit is plugged in to its power supply. Never smoke or allow naked lights into the area while refuelling. Never inhale fuel vapour.

ALWAYS mop up spillages as quickly as possible, and change your clothes if you get fuel on yourself.

ALWAYS store fuel in a purpose-made sealed container, in a cool, safe place well away from the work area.

Always switch OFF the equipment when not in use.

The burners exhaust get very hot so keep your distance. Never look directly into the exhaust port nor cover it at any time.

Keep flammable materials well away from the burners exhaust.

If working above ground-level, work from a suitable, stable platform, an access tower for example. Never work from ladders or steps.

Watch your footing. Take special care if working other than on firm, level ground.

Information on COSHH regulations is available from your local HSS Hire Shop.

ELECTRICAL SAFETY

HSS Electric Pressure washers are fitted with either 240V 16A or 110V 16/32A plugs. They are designed to plug into the heavy duty RCD, supplied as part of the hire package.

If the equipment fails, or if its flex or plug becomes damaged, return it. Never try to repair it yourself.

Keep flexes out of harm's way, and clear of the work area. **Extension leads should be avoided, but if you have no option, use the shortest run possible. Ensure they are fully unwound and loosely coiled, away from the equipment.** Never run them through water, over sharp edges or where they could trip someone.

Keep the equipment dry, using electrical equipment in very damp or wet conditions can be dangerous.



To reduce the risk of electric shock, only use the RCD (Residual Current-Operated Device) supplied with the equipment.

The heavy duty RCD supplied with this machine is there to protect you. **DO NOT ADAPT OR BY-PASS ITS USE.** If you cut the cable, isolate the lead from the power supply and contact your local HSS Hire Shop.

Ensure the Hot Washer and power socket are switched OFF before plugging into the power supply.

GETTING STARTED

Place the unit on firm level ground, as far from the work area as the pressure hose will allow.

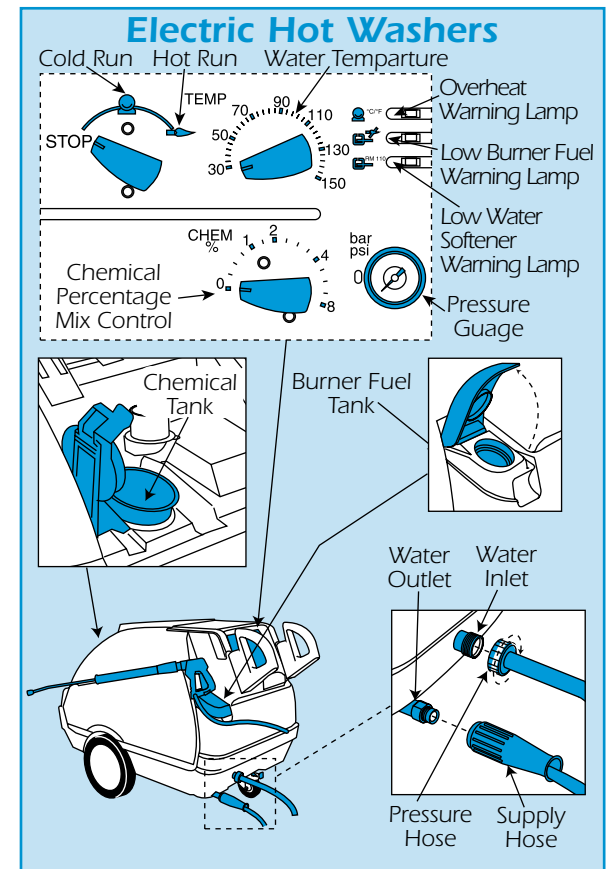
Screw the pressure hose finger tight onto the unit's water outlet.

Connect the unit's water inlet to a suitable tap using a hose secured to the unit's inlet connector with a Jubilee clip. Make sure it is free from kinks and sharp turns that could impede the flow of water.

Make sure the hose has an internal diameter of at least 15mm (1/2in).

Once the mains water supply is established, turn ON the water supply. Flush out the air in the system by squeezing the lance's trigger until water flows freely from the nozzle.

This unit can be used to spray a mixture of water and detergent. Simply fill the chemical tank with the detergent. Use of detergent is covered in Basic Techniques.



Lock the lances trigger OFF using the trigger lock button (see illustration).

BASIC TECHNIQUES

Plug the unit, via the RCD, into its power supply and switch the supply ON.

If using the unit cold, move the ON/OFF switch to ON, Note the unit switches ON & OFF automatically when the lances trigger is operated.

Ensure the chemical percentage control is set at '0' and the lance's pressure control is set to low.

When the pressure indicator on the lance is set to the '-' sign, the pressure output will drop to minimum. If the indicator is set to the '+' sign, the pressure will be at maximum. Start at minimum and increase until the required pressure is reached.

Be prepared for the lance to give a kick each time it is triggered, due to the high pressure delivered. Start with the lance about 1.5m away from the surface being cleaned. Squeeze the trigger and allow the unit to build up to pressure.

Slowly move closer to the work, increasing the pressure if required.