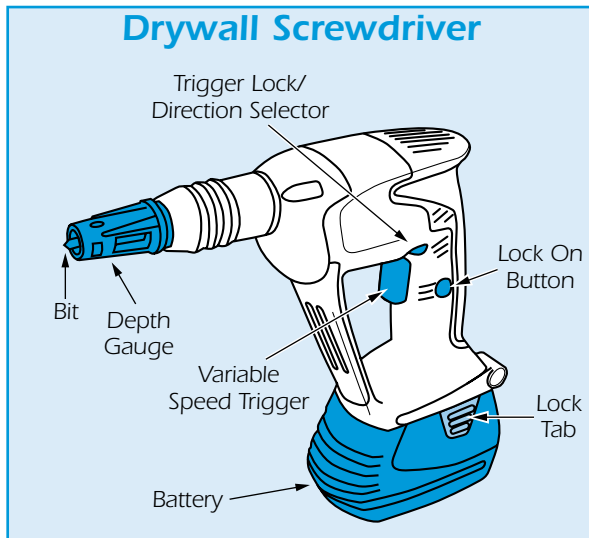


This control is **also used to select direction of rotation** (see diagram).



BASIC TECHNIQUES

Hold the Drywall Screwdriver in both hands and adopt a stable stance that gives a good view of the work while keeping you clear of the bit.

Do not work in areas where you are forced to stand on loose debris or on a slippery uneven surface.

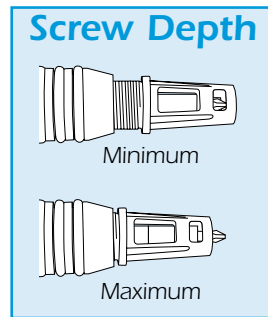
Practice on an area of the work to confirm the settings are correct.

When the screw has been driven into the material to the required depth, the driving tip disengages from the screw. This is achieved by adjusting the depth gauge setting.

Fit the screw to the drive bit (the socket is magnetic and should hold the screw with ease). **Confirm** that the **direction of rotation selector** is set to forward.

Offer the machine up to the work then gently squeeze the ON/OFF trigger to start the bit rotating, place enough pressure on the machine to **allow the bit to stay in contact with the screw head** as it enters the work.

The machine will drive the screw until the depth setting is reached, where upon the bit will cease to travel forward. **Check the setting of the screw** and if the head is imbedded too far into the work or is sitting proud of the work, **adjust the depth setting.** **To adjust the depth turn the depth gauge clockwise**



to decrease the setting and anticlockwise to increase.

Once set you **should not have to make any more adjustments** other than when the bit becomes worn.

If the screw needs to be removed, simply select reverse.

EQUIPMENT CARE

Never push the equipment beyond its design limits. If it will not do what you want with reasonable ease and speed, assume you have the wrong tool for the job. Contact your local HSS Hire Shop for advice.

Keep the equipment clean - you will find this less of a chore if you clean it regularly, rather than wait until the end of the hire period.

Check the condition of the drive bit at regular intervals and replace if worn or damaged.

When not in use, **store the equipment somewhere clean, dry and safe** from thieves.

FINISHING OFF

Disconnect the battery, then brush off any dust and dirt, paying particular attention to the motor's ventilation slot.

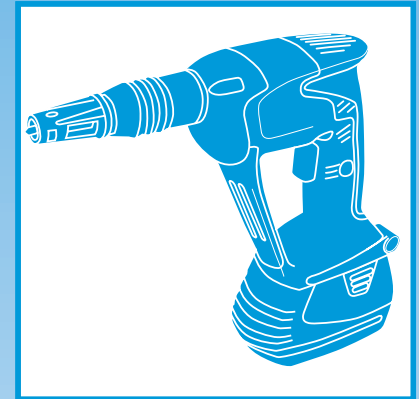
Remove the drive bit then place the Drywall Screwdriver, its battery and charger into its carry case ready for return to your local HSS Hire Shop.



...any comments?
If you have any suggestions to enable us to improve the information within this guide please fax your comments or write to the Product Manager at the address below
Fax: 020 8687 5001

©HSS Hire Service Group Plc 2002 No. 406/01
Group Office: 25 Willow Lane, Mitcham, Surrey CR4 4TS
Web Site: <http://www.hss.com>

HSS Hire Shops



Cordless 18V Drywall Screwdriver

For repetitive driving of screws in dry wall applications.



GENERAL SAFETY

For advice on the safety and suitability of this equipment contact your local HSS Hire Shop.



There is a serious risk of personal injury if you do not follow all instructions laid down in this guide.

The hirer has a responsibility to ensure that all necessary risk assessments have been completed prior to the use of this equipment.


This equipment should only be used by an operator who has been deemed competent to do so by his/her employer.

This equipment should be used by an able bodied, competent adult who has read and understood these instructions. Anyone with either a temporary or permanent disability, should seek expert advice before using it.

Keep children, animals and bystanders away from the work area. Cordon off a NO GO area using either cones, barriers or tape, available for hire from your local HSS Hire Shop.

  Never use this equipment if you are ill, feeling tired, or under the influence of alcohol or drugs.

 Safety goggles MUST be worn by everyone in the work area.

 Wear practical, protective clothing, gloves and footwear. Avoid loose garments and jewellery that could catch in moving parts, tie back long hair.

Ensure the work area is well lit and ventilated, if in doubt, ask about lighting and ventilation equipment at your local HSS Hire Shop.

Always ensure that the ON/OFF switch is locked in the OFF position when the tool is not in use. Remove the battery and store it carefully in the carry case provided. Never leave the unit unattended.

To safeguard against the risk of fire, never allow the battery terminals to come in contact with metal objects.

Keep the work area tidy, do not work in areas where you are forced to stand on loose debris or on a slippery uneven surface.

Only change the direction of rotation when the machine is stopped.

Watch your footing. Take special care if working other than on firm, level ground. Above ground-level. Always work from a stable, purpose-made work platform such as a step-up or trestle.

Take special care when fixing into walls or floors, they may contain hidden pipework or electrical cables. If in doubt, hire a metal locator, to determine the exact position of such hazards.

Do not work near flammable gases or liquids, petrol or paint thinner fumes for example. Keep combustible materials at a safe distance - at least 5m.

Make sure you know how to switch this machine OFF before you switch it ON in case you get into difficulty.

Make sure that everyone is warned of what you are doing.

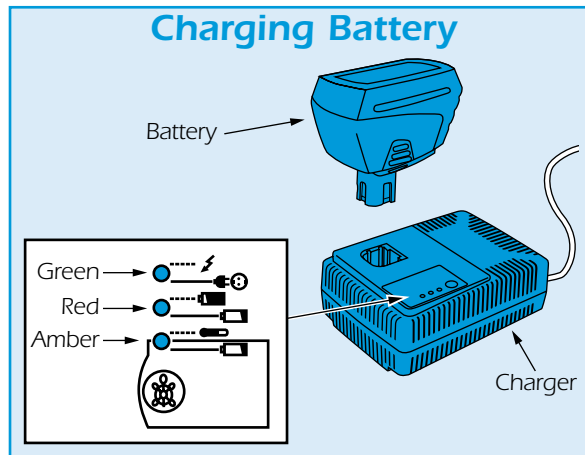
Check the condition of the equipment before use. If it shows signs of damage or excessive wear, return it to your local HSS Hire Shop.

ELECTRICAL SAFETY

The battery charger is designed to plug straight into a standard 230V 13 amp power socket.

To remove the battery from the Drywall Screwdriver, press the lock tabs in with finger and thumb and pull the battery clear.

To recharge, insert the battery pack into the charger, it will only go in one way. Then plug the charger into a suitable power supply and switch the power ON, recharging is fully automatic.



The green lamp illuminates to confirm that the charger is connected to a live power supply.

The red indicator lamp, lights continually when the battery is being charged and blinks once charging is complete.

The amber lamp lights continually to indicate a trickle charge and will blink to indicate that charging has stopped because the battery is either too hot or too cold. The charger will recharge the battery in approximately 1 hour.

If an extension lead is used for the charger, it should be fully unwound and loosely coiled, away from the equipment. Never run leads through water, over sharp edges or where they could trip someone.

Using the charger in very damp or wet conditions can be dangerous.

 To reduce the risk of electric shock, use a suitable RCD (Residual Current-Operated Device)

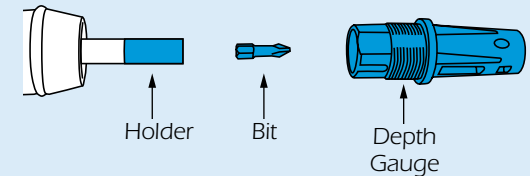
available from your local HSS Hire Shop, or power the charger from a mains circuit with a built-in RCD.

If the Drywall Screwdriver fails, or if the chargers power supply cable or plug gets damaged, return it. Never try to repair it yourself.

Never carry or pull the charger by its power supply cable.

GETTING STARTED

Fitting the Bit

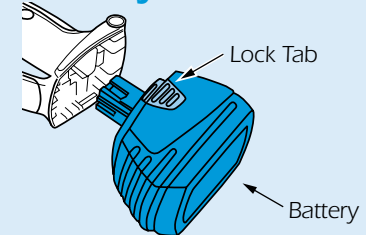


Fit the machine with right bit for the job.

Screw Head	Bit	Screw Diameter
Pozidrive	No 1	2.5 - 3.0mm
Pozidrive	No 2	3.5 - 5.0mm
Philips	No 1	2.5 - 3.0mm
Philips	No 2	3.5 - 5.0mm

Remove the depth gauge (turn anticlockwise) to reveal the drive socket. Insert the required drive bit (see chart), then replace the depth gauge.

Battery Removal



Fit the battery to the Drywall Screwdriver, simply push into the base of the handle until it clicks into position.

The unit is fitted with a variable speed trigger, the further the trigger is moved, the faster the drive bit will rotate.

The trigger can be locked in the ON position for repetitive work, but only at full speed (4000 rpm). To lock the trigger, squeeze the trigger fully in then depress the lock button. Hold the lock button in until you have released the trigger.

To release the trigger lock, squeeze and release the trigger again.

In addition, a trigger lock-off control is fitted, which stops the trigger from being depressed accidentally.