

**There is a halogen lamp built in to the extractor hood and this can be switched ON or OFF using the switch on the side of the hood (see illustration).**

**Begin the weld and check that all the welding fumes are being drawn into the hood.**

**When the work is finished, switch the lamp and extractor OFF.**

## EQUIPMENT CARE

**Never push the equipment beyond its design limits.** If it will not do what you want with reasonable ease and speed, assume you have the wrong type or size of extraction unit for the job. Ask at your local HSS Hire for advice.

**Keep the equipment clean.** You will find this less of a chore if you clean it up regularly rather than wait until the end of the hire period.

When not in use, **store the equipment somewhere clean, dry and safe** from thieves.

## FINISHING OFF

**Switch the lamp and extractor OFF and unplug the unit from the power supply.**

**Neatly coil the power supply lead and give the unit a final clean ready for return,** to your local HSS Hire.



### ... have you been trained

The law requires that personnel using work equipment have received adequate training and must be competent when using the equipment within the workplace.

Training is available at HSS Training Solutions

**0845 766 7799**

### ...any comments?

If you have any suggestions to enable us to improve the information within this guide please e-mail your comments or write to the Safety Guide Manager at the address below  
e-mail: [safety@hss.com](mailto:safety@hss.com)

©HSS Hire Service Group Ltd 2009 No. HW013/02

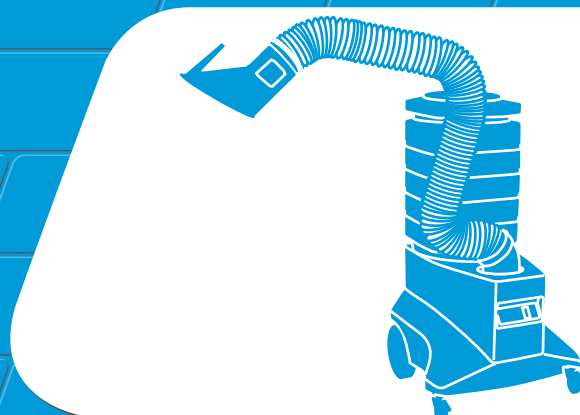
Group Office: 25 Willow Lane, Mitcham, Surrey CR4 4TS

Web Site: <http://www.hss.com>

HW013/02

## Operating & Safety Guide HW013

# HSS Hire



# Fume Extractor Cart

**A portable welding fume extractor with filtration facility, removing the necessity for external ducting.**



Code 55948

## GENERAL SAFETY

For advice on the safety and suitability of this equipment contact your local HSS Hire.

There is a serious risk of personal injury if you do not follow all instructions laid down in this guide.

The hirer has a responsibility to ensure that all necessary risk assessments have been completed prior to the use of this equipment.

Most welding tasks may be considered as hot work in site situations and may be subject to specific permits to work.

This equipment should only be used by an operator who has been deemed competent to do so by his/her employer.

This equipment should be used by an able bodied, competent adult who has read and understood these instructions. Anyone with either a temporary or permanent disability, should seek expert advice before using it.

Keep children, animals and bystanders away from the work area. Cordon off a NO GO area using cones and either barriers or tape, available for hire from your local HSS Hire.

  Never use this equipment if you are ill, feeling tired, or under the influence of alcohol or drugs.

 This equipment is heavy (78Kg), never attempt to lift it on your own, always get help.

Always transport, store and operate the machine in an upright position.

Keep the unit's air vents clear of all obstructions.

Always switch equipment OFF before making any adjustments to it. Never leave it switched ON and unattended.

Ensure the work area is well lit, ask about lighting equipment at your local HSS Hire.

Do not work near flammable gases or liquids, petrol or paint thinner fumes for example. Keep combustible materials at a safe distance – at least 5m.

Check the condition of the equipment before use. If it shows signs of damage or excessive wear, return it to your local HSS Hire.

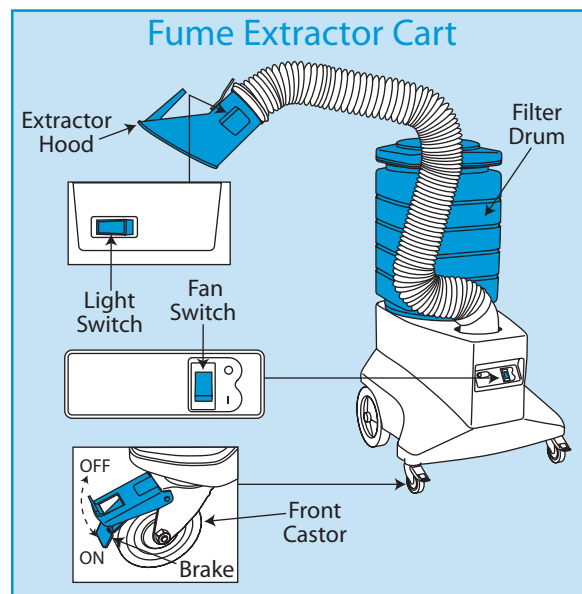
## ELECTRICAL SAFETY

The HSS Fume Extractor Cart requires a suitable 110V 16amp generated supply, or can be powered from the mains via a suitable 110V transformer (minimum 3.5 Kva).

If the equipment fails, or if its power supply cable or plug becomes damaged, return it. Never try to repair it yourself.

Keep cables out of harm's way, and clear of the work area.

Extension leads should be fully unwound and loosely coiled, away from the equipment. Never run them



through water, over sharp edges or where they could trip someone.

Keep the equipment dry, using electrical equipment in very damp or wet conditions can be dangerous.

 To reduce the risk of electric shock, always use a suitable RCD (Residual Current-Operated Device) available from your local HSS Hire.

Ensure the Fume Extractor Cart and the power socket are switched OFF before plugging into the power supply.

## GETTING STARTED

The HSS fume extractor cart is designed for use indoors only.

It should only be used to extract fumes created by a welding process or produced by an angle grinder, do not use the unit for beryllium, cadmium, lead, asbestos and similar hazardous products.

Wheel the unit to the work place and park it on firm level ground.

Position the unit so that the extraction arm is closest to the work and the filter drum is furthest.

Once in position, set the brakes on the front castors to ON.

All that remains is to plug the unit into its power supply and switch the supply ON.

## BASIC TECHNIQUES

Move the extraction hood over the work area close to where the welding will occur.

Switch the extractor ON by moving the fan ON/OFF switch to the 'I' position.