

Once in contact with the work surface, the built in safety brake will disengage and allow normal speed operation.

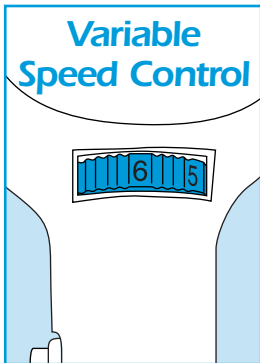
To switch the sander OFF, simply release the trigger, if the lock button is in use, firstly squeeze the trigger in then release.

BASIC TECHNIQUES

Always hold the sander with both hands and bring the sander into contact with the work before switching ON.

Never apply too much pressure. Keep the sander moving and flat to the surface, either in a straight line or in a circular motion, or it may rut the work.

Switch OFF and wait for moving parts to stop before lifting the sander clear of the work.



On first contact with the surface, the sander will try to throw you off line. Practice on a piece of scrap material before attempting the main work.

Adjust the speed to suit the work and finish required, slow for heavy course removal and fast for fine light finishes.

The speed can be adjusted whilst the unit is running.

EQUIPMENT CARE

Never push the equipment beyond its design limits. If it will not do what you want with reasonable ease and speed, assume you have the wrong tool for the job. Contact your local HSS Hire Shop for advice.

Always switch OFF and unplug the sander before making any adjustments to it.

Always use the correct abrasive for the job and change it as soon as it becomes clogged or damaged. Never use the sander without an abrasive fitted.

Empty dust bags when about a third full, and before leaving the sander for any length of time. Dispose of wood dust carefully (see fire warning box).

Keep the equipment clean, you will find this less of a chore if you clean it regularly, rather than wait until the end of the hire period.

When not in use, store the equipment somewhere clean, dry and safe from thieves.

FINISHING OFF

Switch OFF and unplug the sander. Remove any fitted abrasive then empty the dust bag.

Neatly coil its flex and give the unit a final clean up ready for return, to your local HSS Hire Shop.



...any comments?

If you have any suggestions to enable us to improve the information within this guide please fax your comments or write to the Product Manager at the address below

Fax: 0181-687 5001

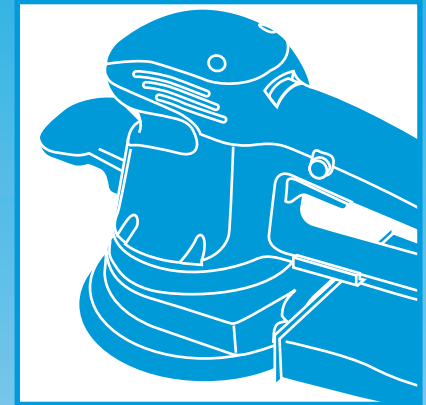
©HSS Hire Service Group Plc 1999 No. 890/01
Group Office: 25 Willow Lane, Mitcham, Surrey CR4 4TS

Web Site: <http://www.hss.co.uk>

Operating & Safety Guide 890

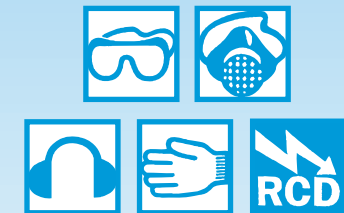
890/01

HSS Hire Shops



150mm Random Orbital Sander

A lightweight sander suitable for finishing wood, metal and paintwork.



Code 05331

GENERAL SAFETY

For advice on the safety and suitability of this equipment **contact your local HSS Hire Shop.**

There is a serious risk of personal injury if you do not follow all instructions laid down in this guide.

This equipment should be used by an able bodied, competent adult who has read and understood these instructions. Anyone with either a temporary or permanent disability, should seek expert advice before using it.

Keep children, animals and bystanders away from the work area.



Never use this equipment if you are ill, feeling tired, or under the influence of alcohol or drugs.



Safety goggles MUST be worn by everyone in the work area.



This equipment generates potentially harmful noise levels. To comply with health and safety at work regulations, **ear defenders must be worn** by everyone in the vicinity.



Some materials when sanded contain substances which, when inhaled, can be harmful to health. A suitable mask must be worn when using this equipment. Respiratory protective equipment is available for hire contact your local HSS Hire Shop for details.



Wear practical, protective clothing and gloves. Avoid loose garments and jewellery that could catch in moving parts, tie back long hair.

Ensure the work area is well lit and ventilated, if in doubt, ask about lighting and dust extraction equipment at your local HSS Hire Shop.

Ensure the work area is free from anything that could ignite wood dust- this can be explosive.

Do not work near flammable gases or liquids, petrol or paint thinner fumes for example. **Keep combustible materials at a safe distance** - at least 5m.

Fire Warning

Wood dust can be dangerous.

Never tip it into a fire or incinerator – it may explode.

Never leave it packed in a dust-bag or similar container, it can ignite spontaneously.

To dispose of it safely, mix it with general rubbish.

Think twice before locking the ON/OFF control in the ON position using the trigger lock.

Make sure you know how to switch this machine OFF before you switch it ON in case you get into difficulty.

If working above ground level, work from a suitable, stable platform – an access tower for example. Never work from ladders or steps.

Never carry or pull the equipment by its power supply cable.

Always switch OFF the equipment when not in use. Disconnect the machine from its power supply before making adjustments to it.

Having switched OFF, **always wait for moving parts to come to rest.**

Check the condition of the equipment before use. If it shows signs of damage or excessive wear, return it to your local HSS Hire Shop.

COSHH information sheets are available from your local HSS Hire Shop.

ELECTRICAL SAFETY

Most HSS Random Orbital Sanders plug into a standard 240v 13amp power socket. However, 110V models (with a round yellow plug) must be provided with a suitable 110V generated supply, or powered from the mains via a suitable 110V transformer.

If the equipment fails, or if its power supply cable or plug becomes damaged, return it. Never try to repair it yourself.

Keep cables out of harm's way, and clear of the work area.

Extension leads should be fully unwound and loosely coiled, away from the equipment. Never run them through water, over sharp edges or where they could trip someone.

Keep the equipment dry, using electrical equipment in very damp or wet conditions can be dangerous.



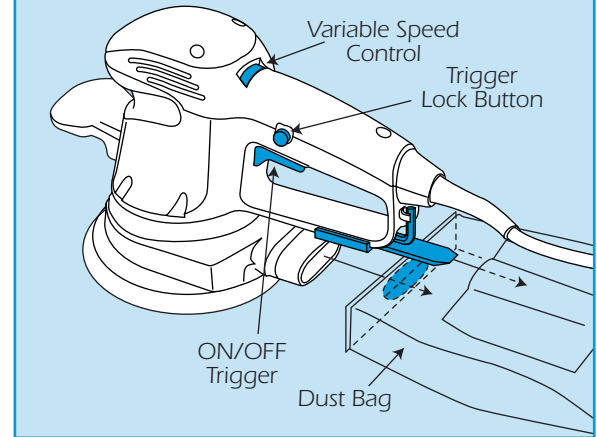
To reduce the risk of electric shock, always use a suitable RCD (Residual Current-Operated Device) available from your local HSS Hire Shop.

Ensure the machine and power socket are switched OFF before plugging into the power supply.

GETTING STARTED

Ensure the work is free from nails, screws etc. If these cannot be removed, drive them well below the surface.

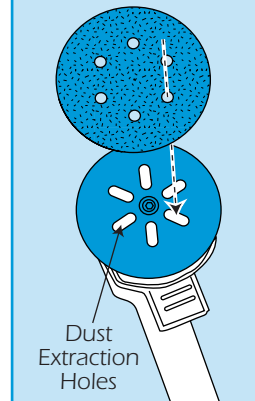
Random Orbital Sander



Fit the sander with the appropriate abrasive. In general, start with a medium grade, then work through to a fine grade until the desired finish is achieved.

With the machine switched OFF and isolated from the power supply, turn the sander upside down.

Fitting the Abrasive



The abrasive disc is held on to the backing pad using a hook and loop system. Simply align the dust extraction pad holes on the backing pad with the holes in the abrasive, then push them together. Double check that the abrasive is fitted centrally.

The sander has a built in dust extraction system. To remove the dust bag, simply slide the bag back. Refitting is the reverse.

The sander is fitted with an ON / OFF trigger, to start the unit simply squeeze the trigger. A

trigger lock button is fitted, which will hold the trigger in the ON position for long repetitive work.

There is also a variable speed control dial on the top of the handle assembly, graded from 1 to 6. The no-load speed can be adjusted from 4,500 rpm (setting 1) to 12,000 rpm (setting 6).

When the sander is running, but is not in contact with the work surface, the sanding pad will rotate at a slow speed. This is due to a safety brake feature built in to the unit and does not mean that the sander is faulty.