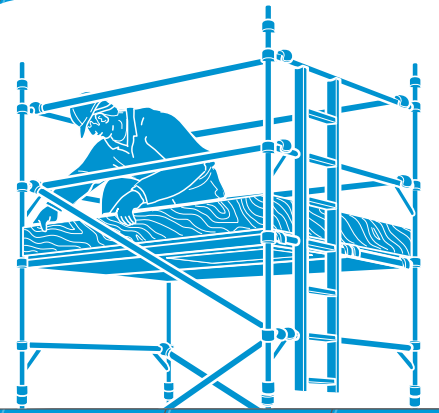


HSS Hire



BOSS GRP (Fibreglass) Access Tower

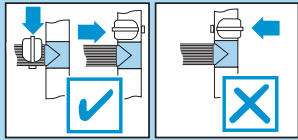
Designed to the European Standard EN1004, the BOSS Alloy Tower provides the ideal platform for light work.

Two versions are available: 1450 mm & 850 mm wide, each with either 1.8 m or 2.5 m deck lengths.

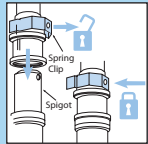


SAFETY CHECKLIST

- ENSURE ALL BRACE CLAWS OPERATE CORRECTLY
- INSPECT COMPONENTS PRIOR TO ERECTION
- INSPECT TOWER PRIOR TO USE AND AFTER MOVEMENT
- TOWER UPRIGHT AND LEVEL
- CASTORS LOCKED AND LEGS CORRECTLY ADJUSTED
- DIAGONAL BRACES FITTED
- STABILISERS FITTED AS SPECIFIED
- PLATFORMS LOCATED CORRECTLY
- TOEBOARDS LOCATED
- CHECK GUARDRAIL BRACES ARE FITTED CORRECTLY (SEE ILLUSTRATION BELOW)



- CHECK FRAME INTERLOCK CLIPS ARE LOCKED (SEE ILLUSTRATION BELOW)



- ENSURE HORIZONTAL BRACES AND GUARDRAILS ARE FITTED CORRECTLY

REFER TO THIS CHECKLIST BEFORE USING EACH TIME

EQUIPMENT CARE

Keep the equipment clean, you will find this less of a chore if you clean it regularly, rather than wait until the end of the hire period.

Components should be stored with due care to prevent damage. Frames and decks should be stored in the vertical position.

When not in use, **store the equipment somewhere clean, dry and safe** from thieves and unauthorised users.



... have you been trained

The law requires that personnel using this type of equipment in the workplace must be competent and qualified to do so. Training is available at HSS Training 0845 766 7799

...any comments?

If you have any suggestions to enable us to improve the information within this guide please e-mail your comments or write to the Safety Guide Manager at the address below e-mail: safety@hss.com

©HSS Hire Service Group Ltd 2020 No. 802/02

76 Talbot Road, Old Trafford, Manchester, M16 0PQ

www.hss.com

INTRODUCTION

This BOSS User Guide is designed to provide you with step by step instructions to ensure your system is erected easily and safely using the **3T (Through the Trapdoor)** method. Before assembly, please read this guide carefully.

The law requires that operatives must be competent and qualified to erect the tower. If another person is involved, please pass on these instructions.

For further information on the safe use of Mobile Access Towers consult the PASMA Guide or EN 1298.

If you need further information, design advice, additional guides or any other help with this product, please contact your local HSS Hire.

GENERAL SAFETY

For advice on the safety and suitability of this equipment contact your local HSS Hire.

There is a serious risk of personal injury if you do not follow all instructions laid down in this guide.

The hirer has a responsibility to ensure that all necessary risk assessments have been completed prior to the use of this equipment.

This equipment should only be used by an operator who has been deemed competent to do so by his/her employer.

This equipment is designed to be used by an able bodied, competent adult who has read and understood these instructions. Anyone with either a temporary or permanent disability should seek expert advice before using it.

Keep children, animals and bystanders away from the work area. Cordon off a NO GO area using cones and either barriers or tape, available for hire from your local HSS Hire.

Never use this equipment if you are ill, feeling tired, or under the influence of alcohol or drugs.

Wear practical, protective clothing, gloves, footwear and a protective hard hat. Avoid loose garments and jewellery that could catch in moving parts, tie back long hair.

Make sure that anyone in the immediate work area is warned of what you are doing.

Check the condition of the equipment before use. If it shows signs of damage or excessive wear, return it to your local HSS Hire.

Check that all components are on site, undamaged and are functioning correctly – (refer to Checklist and Quantity Schedules). **Damaged or incorrect components shall not be used.**

Check the ground on which the mobile access tower is to be erected and moved is **capable of supporting the tower.** The safe working load is 225 kgs (500lbs) per platform level, uniformly distributed up to a maximum of 720kgs (1580lbs) per tower (including self weight).

Towers must always be **climbed from the inside** using the built in ladder during assembly and use.

Safety Warning

Do not use boxes or stepladders or other objects on the platform to gain extra height.

The assembled tower is a working platform and should not be used as a means of access or egress to other structures.

Tower components should be lifted using a **reliable lifting material** (e.g. strong rope), employing a reliable knot (e.g. clove hitch), to ensure safe fastening and **always lift within the footprint of the tower.**

Assembled mobile towers **should not be lifted with a crane** or other lifting device.

The tower should only be **moved by manual effort**, and only **from the base.**

When moving the tower, beware of live electrical apparatus, particularly overhead, plus wires or moving parts of machinery.

No person or materials should be on the tower **during movement.**

Caution should be exercised when wheeling a tower over rough, uneven or sloping ground, taking care to unlock and lock castors. If stabilisers are fitted, they should only be lifted a maximum of 25mm above the ground to clear ground obstructions.

The overall height of the tower when being moved, **should not exceed 2.5 times the minimum base dimensions, or 4 metres overall height.**

After every movement of the tower use a spirit level to check that it is vertical and level and set the adjustable legs as required.

Beware of high winds in exposed, gusty or medium breeze conditions. If the wind is likely to reach gale force the tower should be dismantled.

Wind Description	Beaufort Scale	Beaufort No.	Speed in m.p.h	Speed in m/sec
Medium Breeze	Raises dust and loose paper, twigs snap off	4	8-12	4-6
Strong Breeze	Large branches in motion, telegraph wires whistle	6	25-31	11-14
Gale Force	Walking is difficult	8	39-46	17-21

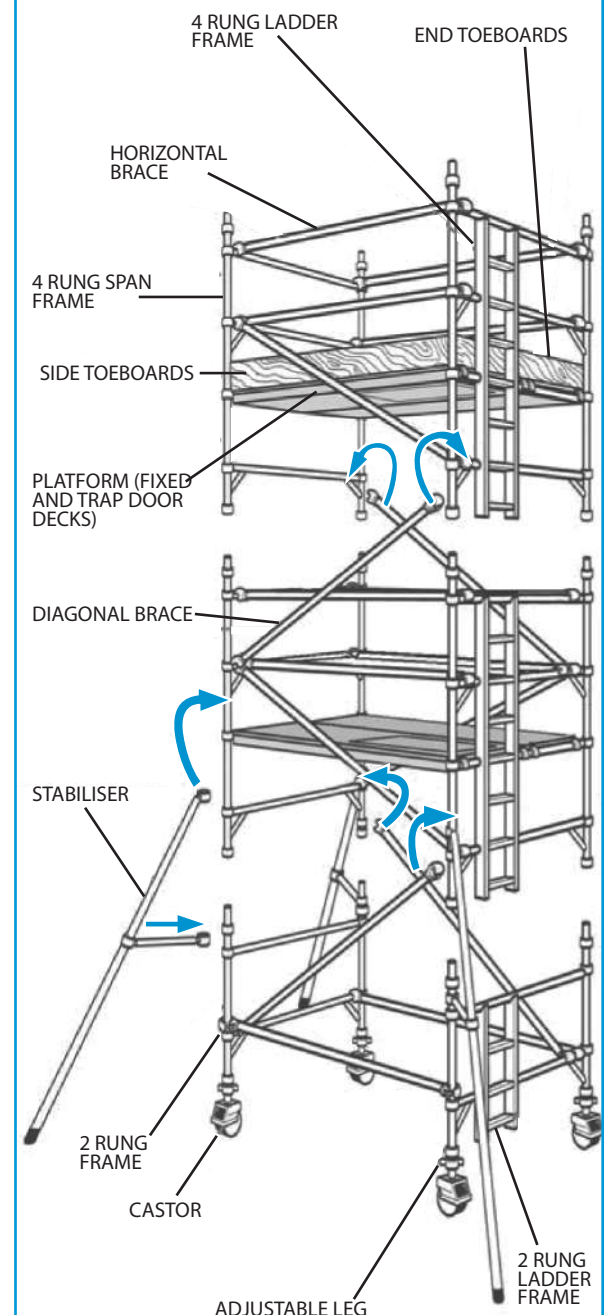
Mobile towers are not designed to be suspended. For more information contact your local HSS Hire. Stabilisers and ballast weights shall always be fitted when specified.

Assemble only as instructed.

Safety Warning

Beware of horizontal forces (e.g. power tools) which could generate instability. Maximum horizontal force 20kg.

IDENTIFIER



Know Your Symbols

HSS have created clear Icons to inform the hirer of their responsibilities towards the safe use of hire equipment.

These are designed to reduce the amount of different safety information labels required for each product for hire.

General use PPE / Warning

Clearly marked minimum PPE will be visible on all equipment,



Correct PPE must be worn



HAV Hand Arm Vibration



Danger Rotating blade



Danger Hot exhaust



Danger Electric shock



Caution Abrasive Wheel



Caution Finger trap

Fuel and Supply Types



Pe
Petrol



Di
Diesel



2t
2 - Stroke Petrol



EI
Electric

Safe Procedures

All hirers must understand and respect the safe procedures of all equipment.

It is the responsibility of the hirer to maintain and return the equipment in a clean condition and good working order.



Ro
Read OPS Guide



Ou
Outdoor Use only



Hi
Heavy Lifting



Cd
Check Oil daily



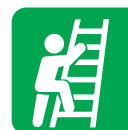
Cf
Check Fuel daily



Cw
Check Water daily



Bc
Battery Care



Sh
Safe Height Working



Swl
Refer to Data Plate



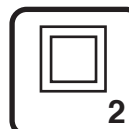
V
Check Power Voltage Data Plate

Electrical Safety

Safe wiring procedures.



Ea
Must be Earthed Class 1



Doi
Double Insulated Class 2



Enl
Earth Live Neutral Wire Coding

Return Responsibility

Charges apply to equipment returned dirty and damaged.



Cc
Cleaning Charge



Rc
Repair Charge