

**Practice!** Always take time to get familiar with the extinguisher and its uses. Don't wait until its needed before you read these instructions.

## EQUIPMENT CARE

**Regularly check all the equipment.** Always check the equipment's general condition before the start of each day or work session. If any component has been used or shows signs of damage contact your local HSS Hire for a replacement.

**Handle all equipment with reasonable care** and make sure that nothing is tampered with, if the 'anti tamper' tab is missing, contact your local HSS Hire for advise.

**When required, place the equipment somewhere clean, dry and easily accessible.** If at any time you are sure the equipment is not needed store the equipment somewhere clean dry and safe from thieves.

## FINISHING OFF

If any part has been used, contact your local HSS Hire for a replacement.

If you have finished with the equipment, collect all parts together ready for return to your local HSS Hire.

### Cleaning

The operator has a duty of care to ensure the equipment is returned clean of any potentially harmful contaminants or body fluids. Equipment that has not been cleaned will not be accepted back by HSS.

## Fire Extinguishers and their Applications

Fire Risk	WATER	CARBON DIOXIDE	ABC POWDER	FOAM SPRAY
	✓		✓	✓
		✓	✓	✓
		✓	✓	
		✓	✓	
			✓	✓

**A** Paper, wood, textiles

**Electrical hazards**

**B** Flammable liquids

**Vehicle protection**

**C** Flammable gases



### ... have you been trained

The law requires that personnel using this type of equipment in the workplace must be competent and qualified to do so.

Training is available at HSS Training  
0845 766 7799

### ...any comments?

If you have any suggestions to enable us to improve the information within this guide please e-mail your comments or write to the Safety Guide Manager at the address below  
e-mail: [safety@hss.com](mailto:safety@hss.com)

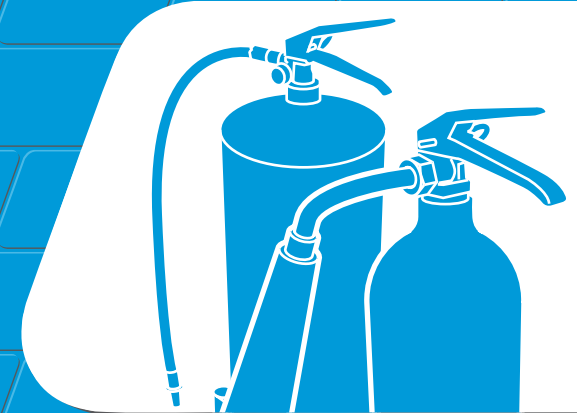
©HSS Hire Service Group Ltd 2020 No. 2770/02  
76 Talbot Road, Old Trafford, Manchester, M16 0PQ

[www.hss.com](http://www.hss.com)

SS770/02

Operating & Safety Guide SS770

# HSS Hire



# Hand Held Fire Extinguishers

A range of controllable fire extinguishers approved to BS EN3.

Code 50753/5/6/7/8

## GENERAL SAFETY

For advice on the safety and suitability of this equipment contact your local HSS Hire.

There is a serious risk of personal injury if you do not follow all instructions laid down in this guide.

The hirer has a responsibility to ensure that all necessary risk assessments have been completed prior to the use of this equipment.

This equipment should only be used by an operator who has been deemed competent to do so by his/her employer.

This equipment may be used in a workplace subject to a permit to work, it is the hirer's responsibility to ensure that the equipment's technical specification meets the requirements of any such permit to work prior to starting work. For further technical information contact your local HSS Hire.

This equipment should be used by an able bodied, competent adult who has read and understood these instructions. Anyone with either a temporary or permanent disability, should seek expert advice before using it.

Wear sensible, suitably protective clothing and footwear plus any safety wear appropriate to the work in progress.

Make sure you know how to operate this equipment safely and are aware of its limitations before you use it.

### If In Doubt

If you have any doubts about how to operate or care for the equipment you have hired, don't experiment and hope for the best, always ask at your local HSS Hire for advice.

This equipment is NOT designed or supplied with the intention of being the main source for fighting a fire.

Remember that this equipment does not guarantee life protection.

Check the condition of the equipment regularly (see getting started). If it shows signs of damage or excessive wear, return it to your local HSS Hire.

COSHH information sheets are available from your local HSS Hire.

## GETTING STARTED

The HSS fire extinguishers are designed to cover a range of fire and flammable types.

It is extremely important that everyone who may need to use the fire extinguisher is familiar with the types, their uses and their safe operation.

It is equally important that the type of extinguisher/s you have hired are suitable for your environment and of sufficient quantity to be of help.

The following is a description of each type available and its application.

**ABC Powder 6kg (code 50755)...**

For rapid knockdown of fires in a wide range of environments including;

Paper Wood and Textiles.

Flammable Liquids.

Flammable Gases.

Live Electrics.

Vehicle Protection.

Liquid, solid or electrical fires can be attacked confidently with this type of extinguisher.

**Water 9Litre (code 50753)...**

For use on carbonaceous material **MUST NOT BE USED ON LIVE ELECTRICAL** installations. Suitable for:

Paper Wood and Textiles.

**CO2 5kg and 2kg (codes 50756 / 50757)...**

Containing Carbon Dioxide under pressure, suitable for liquid and electrical fires;

Flammable Liquids.

Flammable Gases.

Live Electrics.

**Foam 6Litre (code 50758)...**

Aqueous film producing foam, offering good resistance to 'burn back' and protection against re-ignition. **MUST NOT BE USED ON LIVE ELECTRICAL** installations, suitable for use on;

Paper Wood and Textiles.

Flammable Liquids.

Vehicle Protection.

Always check the extinguishers' general condition before the start of each day or work session. Where fitted, pay special attention to the gauge, the pointer **MUST** be within the green zone. If not **DO NOT RELY ON IT**, have HSS replace the unit ASAP.

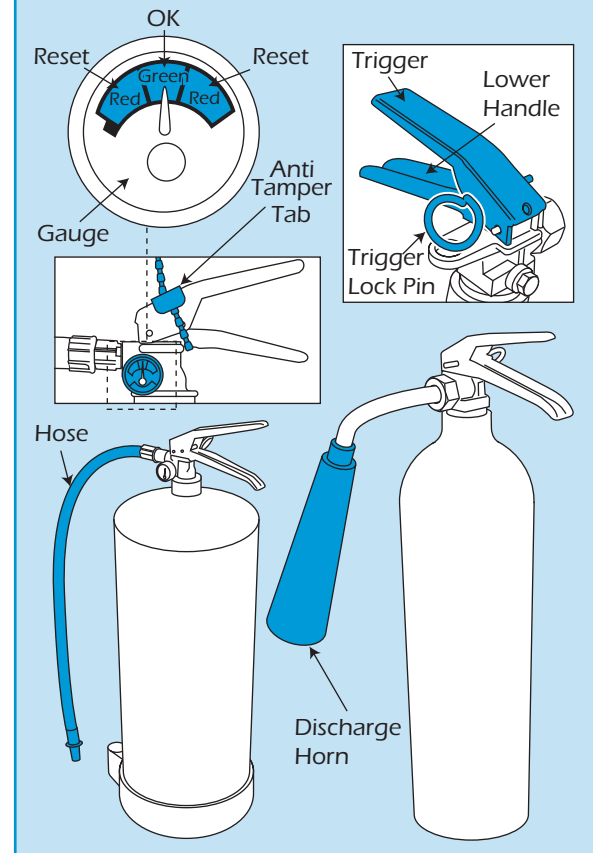
## BASIC TECHNIQUES

If a fire is discovered, your first priority is your safety and the safety of any one in the vicinity. The fire services **MUST** be called to attend before any effort is made to fight the fire.

**DO NOT** attempt to fight a fire unless you are sure that a) you are not in danger and b) your effort will be effective, there is no point in attacking an established fire if you cannot.

**REMEMBER** If you are at all unsure about your safety, evacuate the area and leave the fire!

## Hand Held Fire Extinguishers



Depending on the situation and the type of fire, you must decide which type to use.

To operate the fire extinguisher, firstly lift the cylinder from its mounting bracket by its lower handle.

Place the cylinder on the floor in an upright position. Pull the red plastic 'anti tamper' tab off then pull out the trigger lock pin.

With 1 hand holding the trigger assembly, take hold of the hose with your other hand and pull the hose from its holster.

If using a CO2 cylinder raise the discharge horn outlet but do not hold it as it will become extremely cold in use and may cause frost burns to the skin.

Aim the end of the hose/discharge horn at the base of the fire then squeeze the trigger and lower handle together to activate the unit.

Keep the spray constant, do not use intermittently, and only release the trigger if the area being sprayed has extinguished or the extinguisher is empty.

# Know Your Symbols

HSS have created clear Icons to inform the hirer of their responsibilities towards the safe use of hire equipment.

These are designed to reduce the amount of different safety information labels required for each product for hire.

## General use PPE / Warning

Clearly marked minimum PPE will be visible on all equipment,



Correct PPE must be worn



HAV Hand Arm Vibration



Danger Rotating blade



Danger Hot exhaust



Danger Electric shock



Caution Abrasive Wheel



Caution Finger trap

## Fuel and Supply Types



Pe  
Petrol



Di  
Diesel



2t  
2 - Stroke Petrol



EI  
Electric

## Safe Procedures

All hirers must understand and respect the safe procedures of all equipment.

It is the responsibility of the hirer to maintain and return the equipment in a clean condition and good working order.



Ro  
Read OPS Guide



Ou  
Outdoor Use only



HI  
Heavy Lifting



Cd  
Check Oil daily



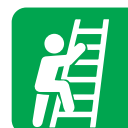
Cf  
Check Fuel daily



Cw  
Check Water daily



Bc  
Battery Care



Sh  
Safe Height Working



Swl  
Refer to Data Plate



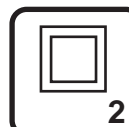
V  
Check Power Voltage Data Plate

## Electrical Safety

Safe wiring procedures.



Ea  
Must be Earthed Class 1



Doi  
Double Insulated Class 2



Enl  
Earth Live Neutral Wire Coding

## Return Responsibility

Charges apply to equipment returned dirty and damaged.



Cc  
Cleaning Charge



Rc  
Repair Charge