

776/02

## Operating & Safety Guide 776

# HSS Hire



# Pallet Truck

For moving large, heavy pallet loads.



Code 70220/1/2/4/8

under the load and pump the handle assembly back and forth to lift the pallet.

Before moving, set the handle to the mid position.

The load and truck can now be pushed or pulled to their destination. For safety reasons, though, it will not turn through angles greater than 180 degrees.

Do not allow the truck to travel at speed or change its direction of travel abruptly – the truck must only be pulled at walking speed with the load behind you.

## EQUIPMENT CARE

Never wheel the truck over rough ground. It damages the equipment and could prove to be extremely dangerous.

When not in use, store the equipment somewhere clean, dry and safe from thieves.

## FINISHING OFF

Thoroughly clean the pallet truck, ready for return to your local HSS Hire Shop.



## ... have you been trained

The law requires that personnel using this type of equipment in the workplace must be competent and qualified to do so.

Training is available at HSS Training  
0845 766 7799

## ...any comments?

If you have any suggestions to enable us to improve the information within this guide please e-mail your comments or write to the Safety Guide Manager at the address below  
e-mail: [safety@hss.com](mailto:safety@hss.com)

©HSS Hire Service Group Ltd 2020 No. 776/02

76 Talbot Road, Old Trafford, Manchester, M16 0PQ

[www.hss.com](http://www.hss.com)

## GENERAL SAFETY

For advice on the safety and suitability of this equipment contact your local HSS Hire Shop.

This equipment has been designed to be used by an able bodied adult. If you suffer from either a temporary or permanent disability, you must seek expert advice before using this equipment.

Keep children, animals and bystanders away from the work area.

Never use this equipment if you are ill, feeling tired, or under the influence of alcohol or drugs.

This equipment should only be used by a competent person who has read and understood these instructions.



Wear practical, protective clothing, gloves and footwear. Avoid loose garments and jewellery that could get in the way of the work, tie back long hair.

Never exceed the maximum safe working load for the equipment.

Never use the equipment to carry people even if their weight is within the maximum permitted loading. Check that the equipment is in good working order before use.

Never leave a load unattended.

Ensure the work area is well lit.

Use the equipment only on clean, firm, level ground. When moving loads keep to a sensible pace. If you go too fast, or if you try to wheel a heavy load down a slope, it could run away with you.

## GETTING STARTED

The Pallet truck has 3 control settings, all controlled by 1 lever.

In the lower position, the handle assembly can be used as a lever to pump the hydraulic jack and thus raise the pallet truck bed.

Once the required height is reached, move the control lever to the mid position. This allows the truck to be manoeuvred and the handle assembly to be moved up and down, without raising the pallet any higher.

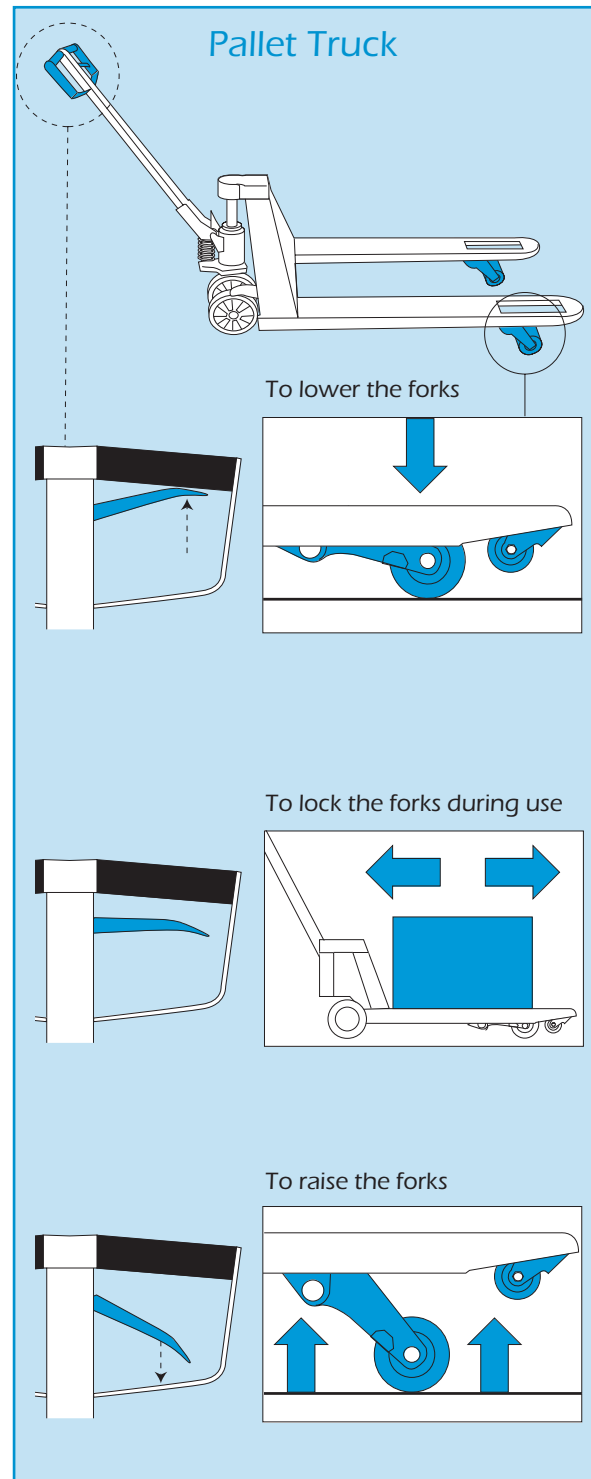
To lower the pallet, raise and hold the control lever to the upper position. This releases the pressure in the hydraulic jack, but be careful and keep hands and feet clear of the load.

## BASIC TECHNIQUES

Check the pallet and load for stability and condition.

When loading and unloading, make sure that the weight is evenly distributed on the pallet so as not to over balance the load. And avoid piling the load up too high, it could topple. Never use the fork tips to lift.

With the handle at the low position, centre the forks



# Know Your Symbols

HSS have created clear Icons to inform the hirer of their responsibilities towards the safe use of hire equipment.

These are designed to reduce the amount of different safety information labels required for each product for hire.

## General use PPE / Warning

Clearly marked minimum PPE will be visible on all equipment,



Correct PPE must be worn



HAV Hand Arm Vibration



Danger Rotating blade



Danger Hot exhaust



Danger Electric shock



Caution Abrasive Wheel



Caution Finger trap

## Fuel and Supply Types



Pe  
Petrol



Di  
Diesel



2t  
2 - Stroke Petrol



EI  
Electric

## Safe Procedures

All hirers must understand and respect the safe procedures of all equipment.

It is the responsibility of the hirer to maintain and return the equipment in a clean condition and good working order.



Ro  
Read OPS Guide



Ou  
Outdoor Use only



HI  
Heavy Lifting



Cd  
Check Oil daily



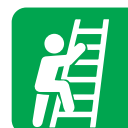
Cf  
Check Fuel daily



Cw  
Check Water daily



Bc  
Battery Care



Sh  
Safe Height Working



Swl  
Refer to Data Plate



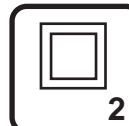
V  
Check Power Voltage Data Plate

## Electrical Safety

Safe wiring procedures.



Ea  
Must be Earthed Class 1



Doi  
Double Insulated Class 2



Enl  
Earth Live Neutral Wire Coding

## Return Responsibility

Charges apply to equipment returned dirty and damaged.



Cc  
Cleaning Charge



Rc  
Repair Charge