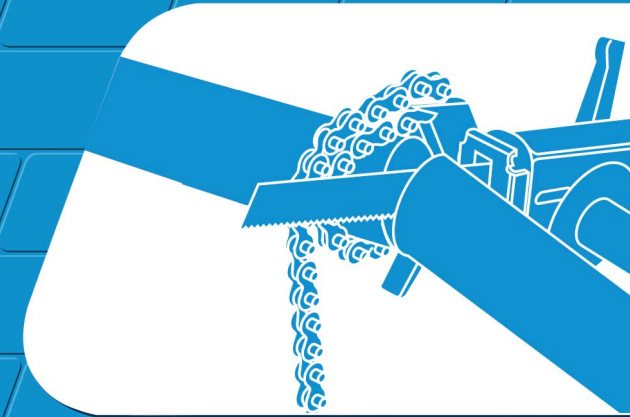


HSS Hire



Reciprocating Pipe Saw

A powerful electric saw supplied with a chain vice to enable perfect right-angled cuts to be made in pipework up to 150mm (6in) in diameter.



Code 68231

Ensure the off-cut has adequate support. It is then less likely to jam the saw blade in the cut.

In a Jam?

If the saw blade jams in the work, switch OFF immediately and unplug the tool. In most cases you can now work the blade free quite easily. However, if a lot of force is needed, apply it by gripping the blade with a pair of pliers rather than by using the tool body as a lever. Then once the blade is free, give the off-cut more support. It is then less likely to trap the blade in future.

When you have finished, simply withdraw the saw from the workpiece, with the motor running, and switch OFF.

EQUIPMENT CARE

Never push the equipment beyond its design limits. If it will not do what you want with reasonable ease, assume you have the wrong tool or blade for the job. Ask at your local HSS Hire Shop for advice.

Keep the equipment clean, (especially the motor's ventilation slots). You will find this less of a chore if you do it regularly rather than wait until the end of the hire period. Always switch OFF and unplug the tool prior to cleaning.

Avoid working the tool continuously for long periods. Some models are fitted with an overload protection switch, if it is being overloaded it will stop. After approx. 1 minute, the overload protector switch may be reset, simply press the switch (see illustration).

When not in use, store the equipment somewhere clean, dry and safe from thieves.

FINISHING OFF

Switch OFF and unplug the saw then remove the saw blade (simply reverse the fitting procedure explained in GETTING STARTED).

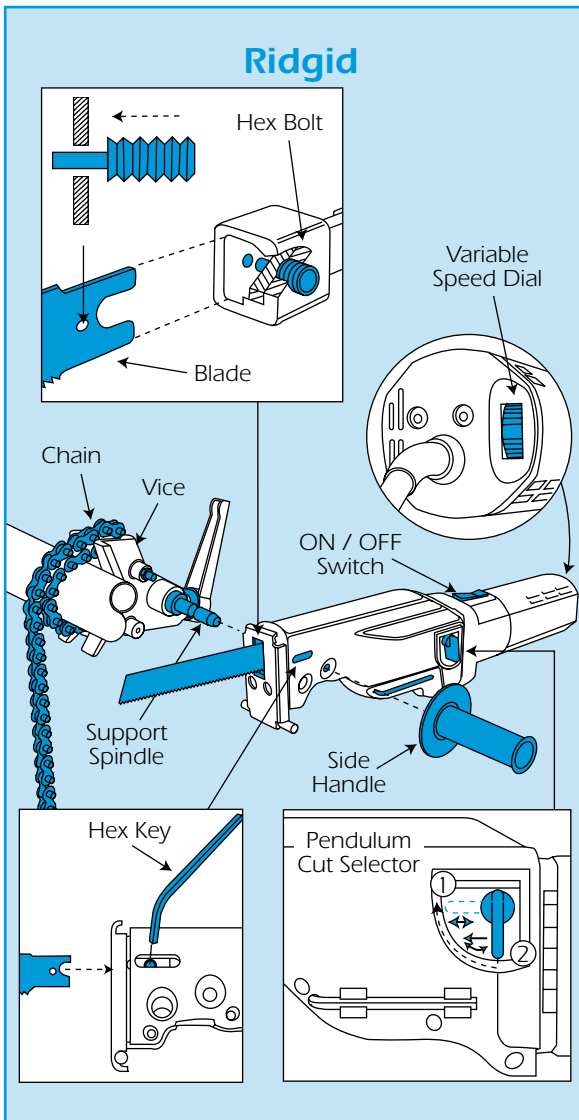
Clean the tool up as far as possible, paying special attention to the motor's ventilation slots.

Finally, **neatly coil the flex** before returning the saw to your local HSS Hire Shop.



©HSS Hire Service Group Ltd 2020 No. 750/01
76 Talbot Road, Old Trafford, Manchester, M16 0PQ

www.hss.com



This machine also has a pendulum cut facility for quick rough cutting. Move the selector to position no.1 for normal cutting and position no.2 for quick rough cutting.

Which ever model you are using...

Grip the tool firmly with both hands, then with the blade clear of the work, switch ON.

Pivot the machine until the blade is in contact with the pipe, then use light pressure while the cut progresses.

Do not force the blade as the motor will overheat and the blade will blunt prematurely. Apply just enough pressure to ensure reasonable progress.

GENERAL SAFETY

For advice on the safety and suitability of this equipment contact your local HSS Hire Shop.

This equipment has been designed to be used by an able bodied adult. If you suffer from either a temporary or permanent disability, you must seek expert advice before using this equipment.

Keep children, animals and bystanders away from the work area.

Never use this equipment if you are ill, feeling tired, or under the influence of alcohol or drugs.

This equipment should only be used by a competent person who has read and understood these instructions.

There is a serious risk of personal injury if you do not follow all instructions laid down in this guide.



Safety Goggles MUST be worn by everyone in the work area.



Some materials when cut contain substances which, when inhaled, can be harmful to health. A suitable mask must be worn when using this equipment.



This equipment generates potentially harmful noise levels. To comply with health and safety at work regulations, ear defenders must be worn by everyone in the vicinity.



Wear practical, protective clothing, gloves and footwear. Avoid loose garments and jewellery that could catch in moving parts, tie back long hair.

Always switch OFF and unplug the tool prior to cleaning, checking or changing blades.

Avoid contact with the blade, the cut surfaces and any swarf, immediately after sawing as high temperatures are generated by the power sawing process.

NEVER start the saw with the blade in contact with the work piece.

Ensure the work area is well lit and ventilated. Do not work near flammable gases or liquids.

Always switch OFF and unplug the equipment when not in use. Never leave it switched ON and unattended.

Never carry or pull the equipment by its flex.

Having switched OFF, always wait for the blade to come to rest before putting the tool down.

When working, adopt a stable, well-balanced stance that lets you see what you are doing while leaving your hands and body behind the cutting edge at all times.

Never use the saw to cut asbestos sheeting, nor any other material that may yield hazardous dust.

Take care when handling or fitting blades – they are sharp.

ELECTRICAL SAFETY

HSS Reciprocating Pipe Saws need a 110V power supply, obtainable from a 110V generator or from the mains via a suitable transformer. Never connect 110V units directly to the 240V mains electricity supply.

If the equipment fails, or if its flex or plug becomes damaged, return it. Never try to repair it yourself.

Keep flexes out of harm's way, and clear of the work area.

Extension leads should be fully unwound and loosely coiled, away from the equipment.

Never run them through water, over sharp edges or where they could trip someone.

Using electrical equipment in very damp or wet conditions can be dangerous.



To reduce the risk of electric shock, use a suitable RCD (Residual Current-Operated Device) available from your local HSS Hire Shop.

Ensure the Saw and power socket are switched OFF before plugging into the power supply.

GETTING STARTED

Fit the saw with the appropriate blade for the job. If in doubt, contact your local HSS Hire Shop for advice.

With the saw unplugged, open its jaws by loosening the small hex bolt with the key provided (on some models it is stored in the tool body). Slide in the new saw blade, locate the hole in the blade over the pin, then re-tighten the hex bolt.

Always double-check that the blade is firmly in place, before attempting to use the saw.

Where appropriate, you should now grip the work in a suitable vice, making sure that the saw blade will not be obstructed.

All that now remains is to plug the saw into its power supply and prepare to switch ON.

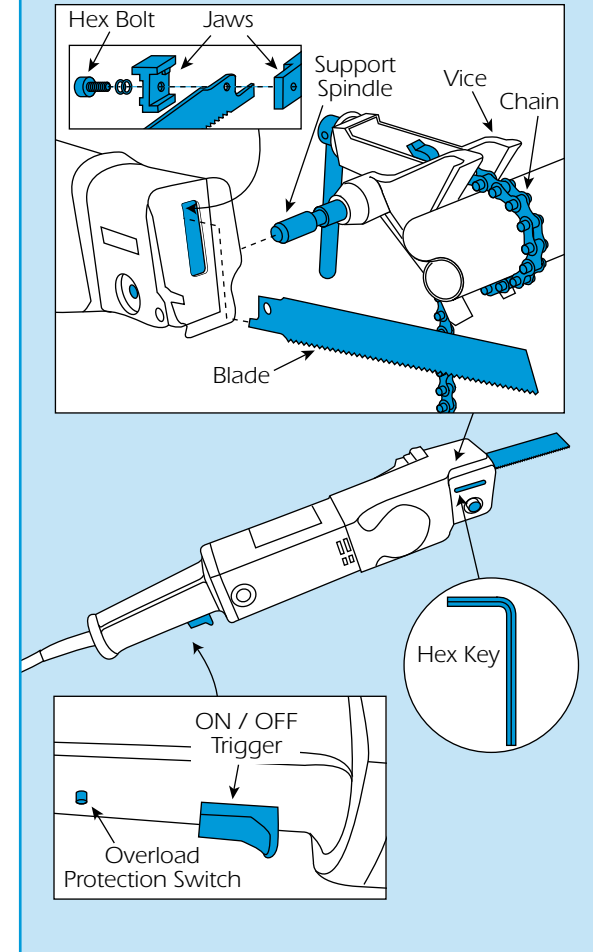
Dependent on model...

To switch the Ridgid model ON, slide the switch forward until it clicks in position and press the rear of the switch to switch OFF.

To switch the Rothenberger model ON simply squeeze the ON/OFF trigger. To switch OFF simply release the trigger.

If using the pipe saw's integral vice, wrap the chain around the pipe and hook the chain into the vices holster. Manoeuvre the vice so that it sits square

Rothenberger



on the pipe with the support spindle level with the bottom of the pipe. Ensure the clamp is secure and fully tightened

Now slot the saw onto the clamp's spindle.

All that now remains is to plug the saw into its power supply and prepare to switch ON.

BASIC TECHNIQUES

3 @ 1,000rpm – for Steel and Iron

4 @ 1,800rpm – for Brass and Copper

5 @ 2,000rpm – for Plastics

6 @ 2,400rpm – for Aluminium

The Ridgid model has a variable speed dial at the end of the motor housing. The machine speed should be set for the material being cut, see chart.

Know Your Symbols

HSS have created clear Icons to inform the hirer of their responsibilities towards the safe use of hire equipment.

These are designed to reduce the amount of different safety information labels required for each product for hire.

General use PPE / Warning

Clearly marked minimum PPE will be visible on all equipment,



Correct PPE must be worn



HAV Hand Arm Vibration



Danger Rotating blade



Danger Hot exhaust



Danger Electric shock



Caution Abrasive Wheel



Caution Finger trap

Fuel and Supply Types



Pe
Petrol



Di
Diesel



2t
2 - Stroke Petrol



EI
Electric

Safe Procedures

All hirers must understand and respect the safe procedures of all equipment.

It is the responsibility of the hirer to maintain and return the equipment in a clean condition and good working order.



Ro
Read OPS Guide



Ou
Outdoor Use only



HI
Heavy Lifting



Cd
Check Oil daily



Cf
Check Fuel daily



Cw
Check Water daily



Bc
Battery Care



Sh
Safe Height Working



Swl
Refer to Data Plate



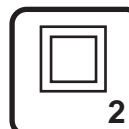
V
Check Power Voltage Data Plate

Electrical Safety

Safe wiring procedures.



Ea
Must be Earthed Class 1



Doi
Double Insulated Class 2



Enl
Earth Live Neutral Wire Coding

Return Responsibility

Charges apply to equipment returned dirty and damaged.



Cc
Cleaning Charge



Rc
Repair Charge