

In general the Fire Points should be sited on exit routes in easily accessible places, which are unlikely to be obstructed. Units should be sited so that it is possible to reach a Site Alert from any point in the building within 45m. The stairwells are ideal locations. This ensures that Site Alerts are in easy reach of personnel and that the sound levels are adequate to warn all persons present.

If the red LED in the switch of any Subsidiary unit starts to pulse during the installation process, this indicates that it has lost contact with the Master unit, and a better location should be found. On large projects, some patience may be required to ensure that the best location for each unit is found.

Once all units have been mounted, and no LED switches remain flashing, the system is now ready for use.

#### TESTING

The HSS Wireless Fire Safety Point system should be tested after installation and weekly thereafter to ensure correct operation. Push the switch on any unit until the alarms sound. Reset the system by pushing the switch on any unit three times in succession. The sirens will continue to sound for a brief period then will silence.

The HSS Wireless Fire Safety Point monitors the connections between units continually. If any Subsidiary unit becomes disconnected from the Master unit, the red LED in the switch of the Subsidiary unit will pulse regularly. This unit should be re-positioned to a location where connection can be re-established. Please note that in buildings where the layout is changing frequently, disconnections will occur, and the user should be aware of this.

If it seems difficult to regain connection, taking the Subsidiary Unit to the Master Unit, and powering down both units (disconnecting the batteries) and powering them up again will restore the connection.

#### EQUIPMENT CARE

Never push the equipment beyond its design limits. If it will not do what you want with reasonable ease and speed, assume you have the wrong equipment for the job. Contact HSS Hire for advice.

Keep the equipment clean - you will find this less of a chore if you clean it regularly, rather than wait until the end of the hire period.

When not in use, store the equipment somewhere clean, dry and secure.

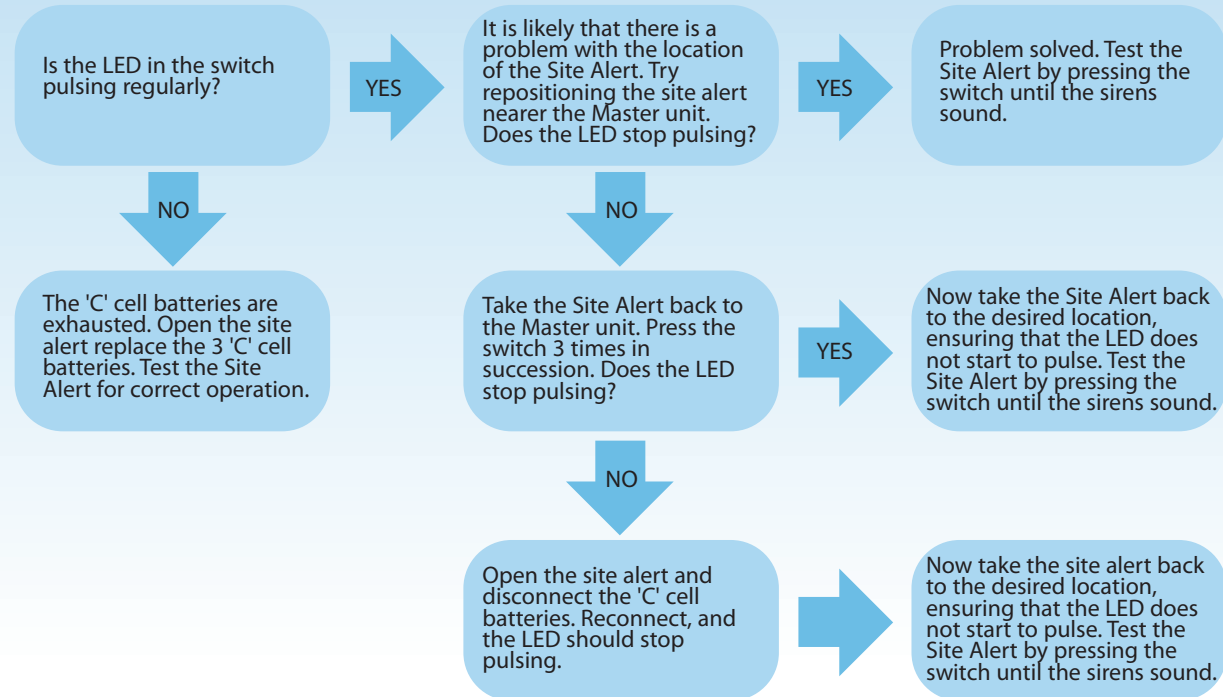
#### FINISHING OFF

Disconnect the batteries in all units

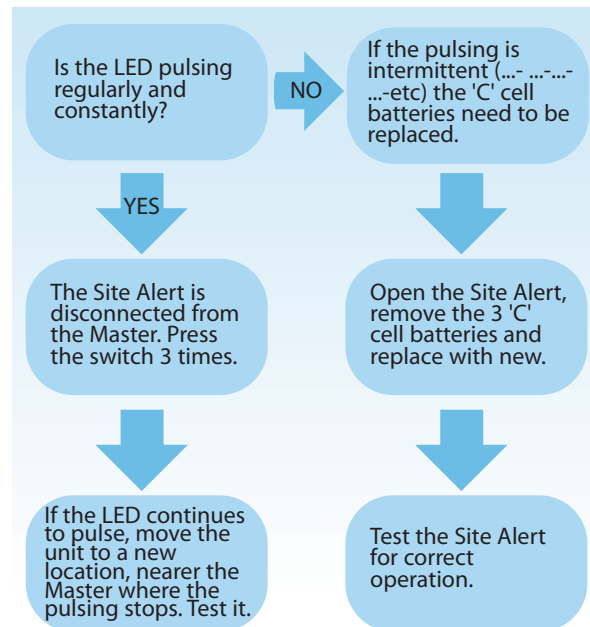
Give them a final clean up ready for return, to HSS Hire.

## TROUBLE SHOOTING

### Site Alert Subsidiary not sounding when system activated



### Site Alert Subsidiary Switch LED is flashing



#### ... have you been trained

The law requires that personnel using this type of equipment in the workplace must be competent and qualified to do so. Training is available at HSS Training 0845 766 7799

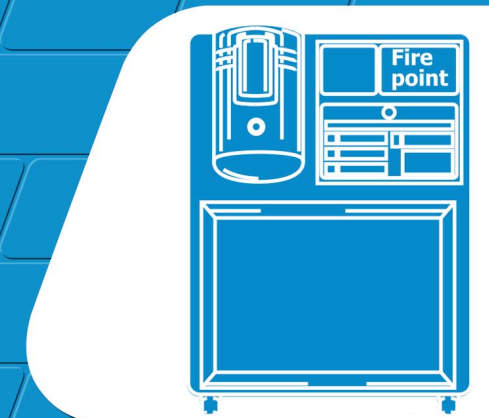
#### ...any comments?

If you have any suggestions to enable us to improve the information within this guide please e-mail your comments or write to the Safety Guide Manager at the address below e-mail: safety@hss.com

©HSS Hire Service Group Ltd 2020 No. 334/01

76 Talbot Road, Old Trafford, Manchester, M16 0PQ

www.hss.com



# Wireless Fire Safety Point

Self-contained, battery operated alarm unit which can be linked wirelessly with up to 30 other units.



Code 50765 / 50767

## GENERAL SAFETY

For advice on the safety and suitability of this equipment contact HSS Hire.

There is a serious risk of personal injury if you do not follow all instructions laid down in this guide.

The hirer has a responsibility to ensure that all necessary risk assessments have been completed prior to the use of this equipment.

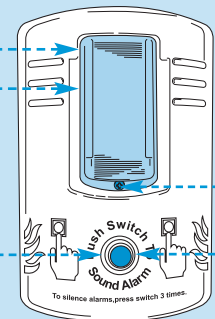
This equipment should only be used by an operator who has been deemed competent to do so by his/her employer.

This equipment should be used by a competent adult who has read and understood these instructions. Anyone with either a temporary or permanent disability, should seek expert advice before using it.

**Do not set up** this equipment if you are **ill, feeling tired, or under the influence of alcohol or drugs.** Use only high quality alkaline batteries.

## IDENTIFIER

These 2 LEDs illuminate if the 9V (PP3) battery needs replacing

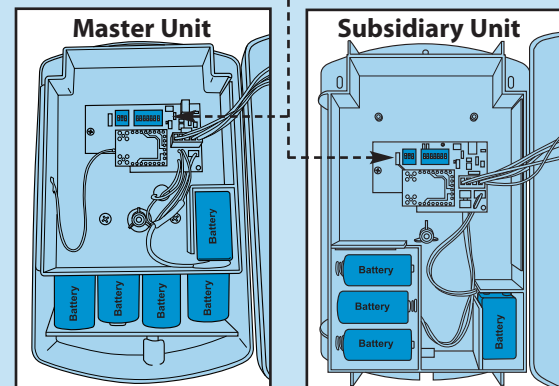


The screw to open the unit

The LED in the switch pulses regularly and constantly if the units has lost connection with the Master

The LED in the switch flashes intermittently (... - ... - ... - etc.) if the C-cell batteries need replacing

DIP Switch for addressing – the address for the Master unit should be the same as the highest number Subsidiary unit on the system



## GETTING STARTED

The HSS Wireless Fire Safety Point is designed to alert the occupants of a building or site in the event of an emergency such as a fire. This is a self-contained, battery operated alarm unit which can be linked wirelessly with up to 30 other units, so that the operation of one unit will cause all other linked units to sound. The HSS Wireless Fire Safety Point is specifically designed for use on construction sites and other temporary situations, where a conventional fire alarm system is not appropriate.

Never use the HSS Wireless Fire Safety Point until you have fully read and understood this User Guide and the machine has been properly set up using the information it contains.

### BEFORE INSTALLATION

Decide how many Site Alerts will be linked together on the system.

Remove screw from the front of each Subsidiary Unit.

Open the cover and set the address for each Subsidiary unit using the DIP switches (see DIP switch address diagram).

Connect the 2 sets of batteries. The red LED in the switch will pulse regularly, indicating that the Subsidiary unit is not yet connected to the Master unit.

Once all Subsidiary units have been addressed and have been the batteries connected, open the Master unit and set the Master unit address on the DIP switches the same as the last Subsidiary unit (i. e. highest numbered address). Connect the 2 sets of batteries in the Master unit.

The red LEDs on the switches on each Subsidiary unit will stop pulsing once they have established contact with the Master unit.

### BATTERIES

The HSS Wireless Fire Safety Point units are powered by standard alkaline batteries. These should be replaced at least annually. Disconnect the old batteries and dispose of them safely. Position the new batteries in the same manner and re-connect. If the device is in storage for any length of time, disconnect the batteries.

The Site Alert has an automatic battery test facility. If the 9V (PP3) battery requires replacement two LEDs on the beacon will illuminate. If the 1.5V batteries require replacement the LED in the switch will flash intermittently (... - ... - ... - etc.). The Master unit contains 8 x 'D' cell batteries, and the Subsidiary units contain 3 x 'C' cell batteries. The LED in the switch in the Master unit will pulse regularly if any Subsidiary unit becomes disconnected. Likewise, the LED in the switch in the Master unit will flash intermittently (... - ... - ... - etc.) if the 3V batteries in any of the Subsidiary units is low.

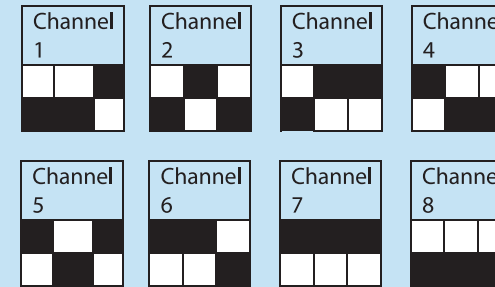
**NOTE:** Low batteries can cause disconnections, so always check the batteries if disconnections are occurring between the Master and Subsidiary units.

## RUNNING MORE THAN 30 UNITS

If more than 30 Subsidiary units are required to operate in close proximity, it is possible to operate up to 8 other systems on different channels. In order to set up a system on a different channel, DIP switches are used to re-code the system (See the DIP switch channel address diagram for further information). Units on different channels do not link together.

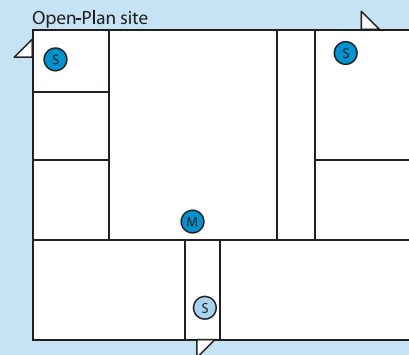
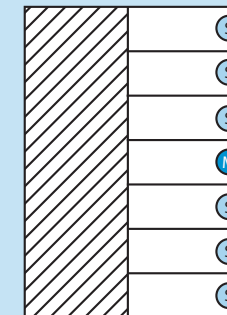
### DIP Switch Channel Address Diagram

Note: The white squares indicate the switch positions.



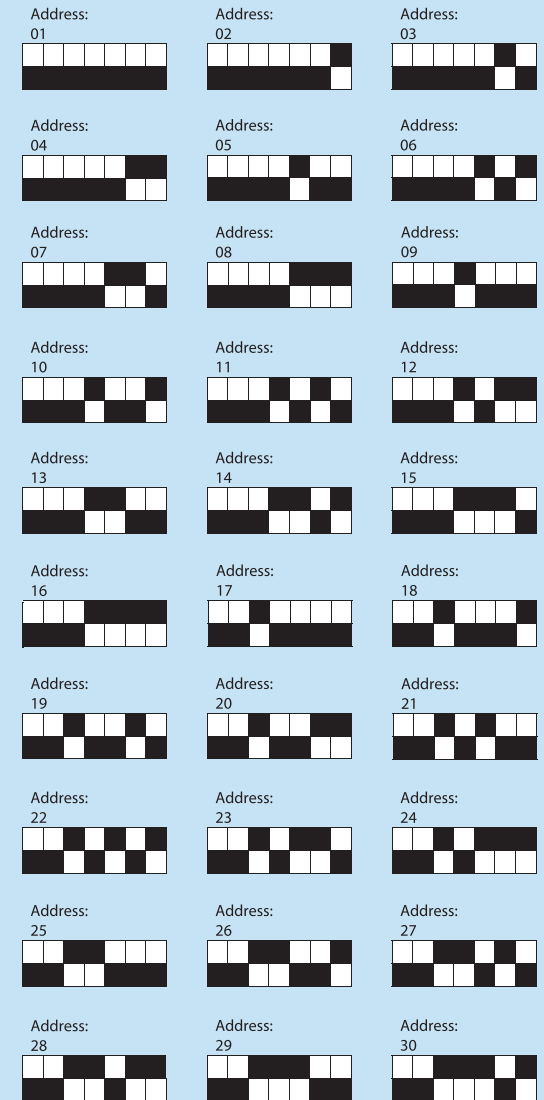
### Typical Site Layouts

- (S) Subsidiary unit
- (M) Master unit



### DIP Switch Address Diagram

Note: The white squares indicate the switch positions.



## BASIC TECHNIQUES

### MOUNTING THE SITE ALERTS

The Site Alerts can now be positioned in the desired locations. The Master unit should be mounted in a central location, within range of all the Subsidiary units.

# Know Your Symbols

HSS have created clear Icons to inform the hirer of their responsibilities towards the safe use of hire equipment.

These are designed to reduce the amount of different safety information labels required for each product for hire.

## General use PPE / Warning

Clearly marked minimum PPE will be visible on all equipment,



**Correct PPE must be worn**



**HAV Hand Arm Vibration**



**Danger Rotating blade**



**Danger Hot exhaust**



**Danger Electric shock**



**Caution Abrasive Wheel**



**Caution Finger trap**

## Fuel and Supply Types



**Pe**  
Petrol



**Di**  
Diesel



**2t**  
2 - Stroke Petrol



**EI**  
Electric

## Safe Procedures

All hirers must understand and respect the safe procedures of all equipment.

It is the responsibility of the hirer to maintain and return the equipment in a clean condition and good working order.



**Ro**  
Read OPS Guide



**Ou**  
Outdoor Use only



**HI**  
Heavy Lifting



**Cd**  
Check Oil daily



**Cf**  
Check Fuel daily



**Cw**  
Check Water daily



**Bc**  
Battery Care



**Sh**  
Safe Height Working



**Swl**  
Refer to Data Plate



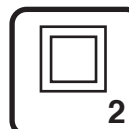
**V**  
Check Power Voltage Data Plate

## Electrical Safety

Safe wiring procedures.



**Ea**  
Must be Earthed Class 1



**Doi**  
Double Insulated Class 2



**Enl**  
Earth Live Neutral Wire Coding

## Return Responsibility

Charges apply to equipment returned dirty and damaged.



**Cc**  
Cleaning Charge



**Rc**  
Repair Charge