

GETTING STARTED

Double check that the hoist you have hired has a sufficient Safe Working Load (SWL) for the item being lifted.

Make sure that the hoist you have hired has a long enough load chain.

Check and confirm that the suspension/anchorage point is tested and certified to the equivalent (or preferably greater) SWL of the hoist.

Visually inspect the hoist, paying special attention to the condition of the chains and hooks.

Check that the lifting hook assembly has not been looped between the chains. Looped chains will damage the equipment and may cause the equipment to fail during a lift.

Chains should be clean and free from dust, dirt, moisture and grease. If the chain is gouged, twisted or has distorted or damaged links DO NOT USE IT, return it to HSS Hire.

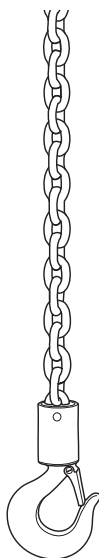
Hooks MUST be distortion free and the gate must return under spring load.

Allow a 10% safety margin to accommodate dynamic forces that may arise during the course of a lift.

To use an electric hoist first connect the power supply to the fixed plug on the unit. Either using a suitable fly lead or alternatively, a loose end cable drum (available for hire from your local HSS Hire.

All the hoist controls are found on the pendant. To raise a load press the button with the up arrow. To lower a load, press the button with the down arrow.

There is a red emergency stop button on the pendant, if pressed the hoist will stop. To reset the button turn it clockwise until it pops back out.



BASIC TECHNIQUES

Attach the hoist to a suitable tested suspension or anchorage point, using the body hook. Make sure the gate is correctly closed before proceeding.

Where the item to be moved has a dedicated lifting eye this should be used.

If the item has no lifting eye, suitable slings/chains must be used.

Before lifting, ensure the load is free and not restrained by fixings etc.

Determine the loads weight and centre of gravity as accurately as possible.

Attach suitable slings / chains to the load and attach to

the lifting hook ensuring the hook is not overcrowded and that the hooks gate closes correctly.

Lift the load a nominal distance to check balance and security of the load.

Use tag lines to control long or bulky loads.

Once raised lower as soon as possible. DO NOT leave the load suspended or unattended for any reason.

EQUIPMENT CARE

Never push the equipment beyond its design limits. If it will not do what you want with reasonable ease and speed, assume you have the wrong equipment for the job. Contact HSS Hire for advice.

Keep the equipment clean - you will find this less of a chore if you clean it regularly, rather than wait until the end of the hire period.

When not in use, store the equipment somewhere clean, dry and secure.

FINISHING OFF

Lower any raised load and detach from the lifting hook.

Detach the hoist from its suspension point and disconnect from the power/air supply and place in the case provided ready for return to HSS Hire.



... have you been trained

The law requires that personnel using this type of equipment in the workplace must be competent and qualified to do so.

Training is available at HSS Training
0845 766 7799

...any comments?

If you have any suggestions to enable us to improve the information within this guide please e-mail your comments or write to the Safety Guide Manager at the address below
e-mail: safety@hss.com

©HSS Hire Service Group Ltd 2020 No. LS64/02

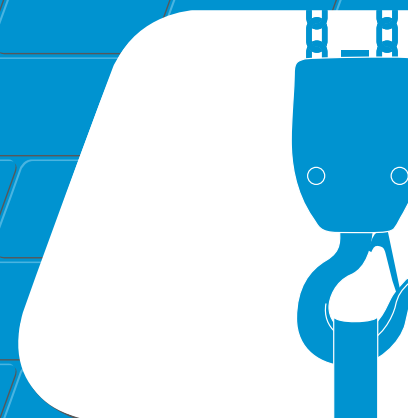
76 Talbot Road, Old Trafford, Manchester, M16 0PQ

www.hss.com

LS64/02

Operating & Safety Guide LS64

HSS Hire



Electric Chain Hoist

Electrically operated hoists, simple to install and easy to operate.



Code 69105/7/8/9/12/13/14/16/22/26/32

GENERAL SAFETY

For advice on the safety and suitability of this equipment contact HSS Hire.


There is a serious risk of personal injury if you do not follow all instructions laid down in this guide.


The hirer has a responsibility to ensure that all necessary risk assessments have been completed prior to the use of this equipment.

This equipment should only be used by an operator who has been deemed competent to do so by his/her employer.


This equipment should be used by an able bodied, competent adult who has read and understood these instructions. Anyone with either a temporary or permanent disability, should seek expert advice before using it.

Keep children, animals and bystanders away from the work area. Cordon off a NO GO area using cones and either barriers or tape, available for hire from your local HSS Hire.

 **Never use this equipment if you are ill, feeling tired, or under the influence of alcohol or drugs.**

 **Wear practical, protective clothing, gloves and footwear and a protective hard hat.**
Avoid loose garments and jewellery that could catch in moving parts, tie back long hair.

 **Prevent hook overcrowding, with a 'Bow' shackle. Join lifting equipment with a 'D' shackle. Protect sharp edges to prevent load damage.**

 **Before lifting a load, check that the hook safety catch is engaged and the load chain is untangled, hanging freely and shows no sign of damage.**

 **Ensure the load is balanced, stable and that personnel stand clear of the raised load.**

Use this type of equipment only on structures that are able to bear its weight and its load.

Make sure you know how to operate this equipment safely and are aware of its limitations before you use it.

It is the operator's responsibility to perform a risk assessment before using this equipment. You are also responsible for the safety of any person in the work area.

Make sure that anyone in the immediate work area is warned of what you are doing.

SAFETY WARNING

This equipment **MUST NOT** be used to carry or lift personnel.

Do not shock load this equipment.

Never leave the equipment loaded or unattended.

Make sure the landing area is unobstructed and **able to accept the load in size and weight.**

Never exceed the equipment's safe working load, see chart.

Comm Code	SWL (ton)	Height of Lift (m)
69105	0.5	9
69107	0.5	12
69108	0.5	15
69109	0.5	25
69112	1.0	9
69113	1.0	12
69114	1.0	15
69116	1.0	25
69122	2.0	12
69126	2.0	25
69132	3.0	15

Always switch OFF and unplug the machine before making adjustments to it.

Never carry or pull the equipment by its power supply cable.

Check the condition of the equipment before use.

If it shows signs of damage or excessive wear, return it to your local HSS Hire.

ELECTRICAL SAFETY

HSS Electric Hoists must be provided with a suitable 110V generated supply, or powered from the mains via a suitable 110V transformer (minimum 3kVA tool rating).


If the equipment fails, or if its power supply cable or plug becomes damaged, **return it.** Never try to repair it yourself.

Keep cables out of harm's way, and clear of the work area.

Extension leads should be avoided, however, if you have no alternative ensure it is fully unwound and loosely coiled, away from the equipment.

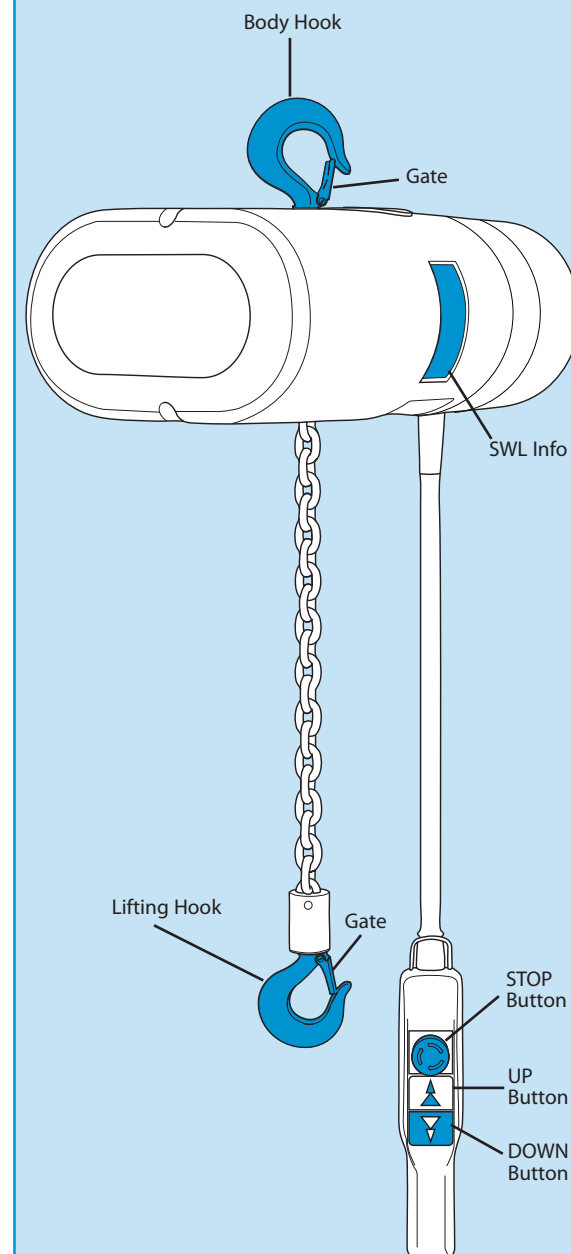
Never run leads through water, over sharp edges or where they could trip someone.

Using electrical equipment in very damp or wet conditions can be dangerous.

 **To reduce the risk of electric shock, always use a suitable RCD (Residual Current-Operated Device) available from your local HSS Hire.**

Ensure the power socket is switched OFF before plugging into the power supply.

IDENTIFIER



Know Your Symbols

HSS have created clear Icons to inform the hirer of their responsibilities towards the safe use of hire equipment.

These are designed to reduce the amount of different safety information labels required for each product for hire.

General use PPE / Warning

Clearly marked minimum PPE will be visible on all equipment,



Correct PPE must be worn



HAV Hand Arm Vibration



Danger Rotating blade



Danger Hot exhaust



Danger Electric shock



Caution Abrasive Wheel



Caution Finger trap

Fuel and Supply Types



Pe
Petrol



Di
Diesel



2t
2 - Stroke Petrol



EI
Electric

Safe Procedures

All hirers must understand and respect the safe procedures of all equipment.

It is the responsibility of the hirer to maintain and return the equipment in a clean condition and good working order.



Ro
Read OPS Guide



Ou
Outdoor Use only



HI
Heavy Lifting



Cd
Check Oil daily



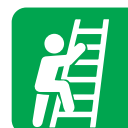
Cf
Check Fuel daily



Cw
Check Water daily



Bc
Battery Care



Sh
Safe Height Working



Swl
Refer to Data Plate



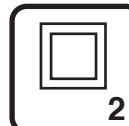
V
Check Power Voltage Data Plate

Electrical Safety

Safe wiring procedures.



Ea
Must be Earthed Class 1



Doi
Double Insulated Class 2



Enl
Earth Live Neutral Wire Coding

Return Responsibility

Charges apply to equipment returned dirty and damaged.



Cc
Cleaning Charge



Rc
Repair Charge