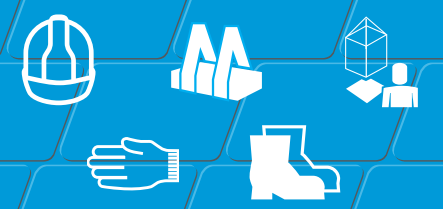
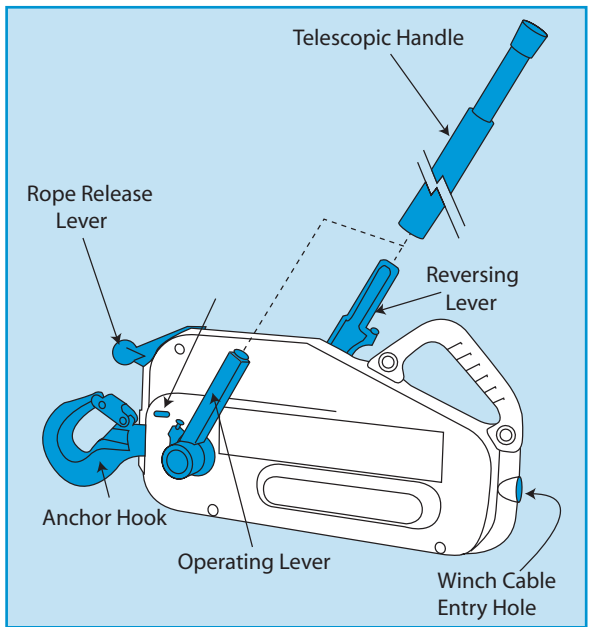


Manual Tirfor Winches

For lifting or pulling loads into position.



Code 69706 / 07 / 08



When you are ready to lower (or release) the load, place the telescopic handle onto the reversing lever and again crank the handle back and forth. The cable will be drawn out on each forward stroke. You can increase the lifting or pulling capacity by following the guides opposite.

EQUIPMENT CARE

Never push the equipment beyond its design limits. If it will not safely do what you want with reasonable ease and speed, assume you have the wrong equipment for the job. Contact your local HSS Hire for advice.

Keep the equipment clean, you will find this less of a chore if you clean it regularly, rather than wait until the end of the hire period.

Never exceed the equipment's Safe Working Load. When not in use, store the equipment somewhere clean, dry and safe from thieves.

FINISHING OFF

Lower any raised load and detach from the cables hook.

Next push in the rope release catch and move the rope release lever fully back to disengage the grip jaws.

Pull the winch cable out all the way, then carefully wind it onto its transit frame.

Detach the winch from its suspension/anchorage point and place complete with handle ready for return to your local HSS Hire.

Increased Pulling Power

Pulling Example - 1

1t	0.925t	1.925t
1t	2.545t	3.545t

Pulling Example - 2

1t	0.925t	2.575t
1t	2.575t	3.545t

Machine Attached to Load

1.925t	1.925t
3.545t	3.545t

Increased Lifting Power

Machine Anchored Above Load

1t	0.925t	1.925t
1t	1.765t	2.765t

Machine Anchored To Load

1.925t	2.765t	
1t	0.925t	1.925t
1t	1.765t	2.765t

Machine Anchored at Ground Level

2.765t	3.575t
1.785t	2.575t



... have you been trained
The law requires that personnel using work equipment have received adequate training and must be competent when using the equipment within the workplace. Training is available at HSS Training Solutions 0845 766 7799

...any comments?
If you have any suggestions to enable us to improve the information within this guide please e-mail your comments or write to the Safety Guide Manager at the address below e-mail: safety@hss.com

©HSS Hire Service Group Ltd 2020 No. LS39/02
76 Talbot Road, Old Trafford, Manchester, M16 0PQ

www.hss.com



GENERAL SAFETY




For advice on the safety and suitability of this equipment contact your local HSS Hire.


There is a serious risk of personal injury if you do not follow all instructions laid down in this guide.


This equipment is designed to be used by an able bodied, competent adult who has read and understood these instructions. Anyone with either a temporary or permanent disability, should seek expert advice before using it.

Keep children, animals and bystanders away from the work area. Cordon off a NO GO area using cones and barriers.


  Never use this equipment if you are ill, feeling tired, or under the influence of alcohol or drugs.

   Wear practical, protective clothing, gloves, footwear and a protective hard hat. Avoid loose garments and jewellery that could catch in moving parts, tie back long hair.

 Do not use cables or chains to lift the load always use suitable slings and protect them from sharp edges.

 Use this equipment for vertical lifts only and secure to a level point able to take the combined weight of the load and the equipment.

 Ensure the load is balanced and stable and that personnel stand clear of the raised load. Attach "tag" lines to control rotation.

 Before lifting a load check that the hook safety catch is engaged and the load cable/chain is untangled, hanging freely and shows no sign of damage.

Make sure you know how to operate this equipment safely and are aware of its limitations before you use it.

It is both the hirers and the operators responsibility to perform a risk assessment before assembling or using this equipment. You are also responsible for the safety of anyone in the work area.

Make sure that anyone in the immediate work area is warned of what you are doing. Never allow anyone under a raised load or in a position where they are at risk if the load shifts.

Never leave the equipment loaded or unattended.

Make sure any landing area is unobstructed and able to accept the load in size and weight.

This equipment MUST NOT be used to carry or raise personnel.

Attach this type of equipment only on structures that are able to bear its weight and its load.

Never exceed the winches safe working load for the item being lifted.

Check the condition of the equipment before use. If it shows signs of damage or excessive wear, return it to your local HSS Hire.

GETTING STARTED

Check that the winch you have hired has a sufficient Safe Working Load (SWL) for the item being lifted.

Make sure that the winch you have hired has a long enough cable for the load you are moving.

Check and confirm that the suspension/anchor point for the winch is tested and certified to the equivalent (or preferably greater) SWL of the winch.

Visually inspect the winch, paying special attention to the condition of the cable and hooks.

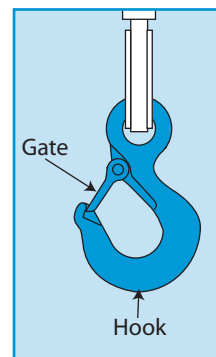
The cable should be clean and free from dust, dirt, moisture and grease. If the cable is gouged, twisted or has distorted in any way DO NOT USE IT, return it to your local HSS Hire.

Hooks MUST be distortion free and the gate must return under spring load.

Attach the winch to a suitable tested suspension/anchorage point, using the anchor hook or bar (see illustration). Make sure the hooks gate is correctly closed or the bars retaining pin is correctly located before proceeding.

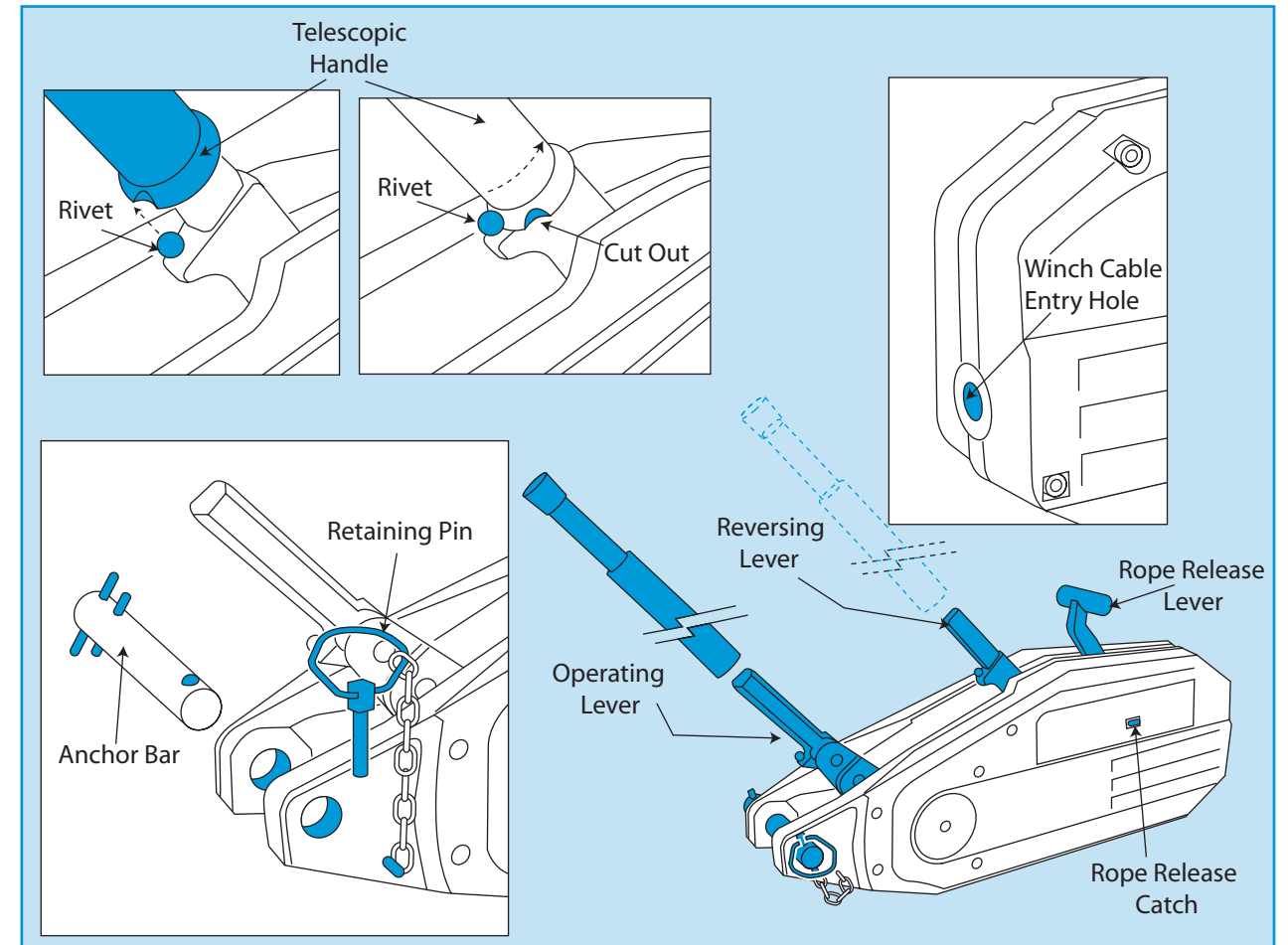
Next push in the rope release catch and move the rope release lever fully back to disengage the grip jaws.

Slide the blank end of the winch cable into the entry hole at the front of the winch and feed it until it appears through the other end.



You can now attach the cables hook to the item being moved and pull the excess cable through the unit.

Once the slack has been taken up, again push in the rope release catch and move the rope release lever fully forward to engage the grip jaws.



BASIC TECHNIQUES

Where the item to be raised has a dedicated lifting eye this should be used.

If the item has no lifting eye, suitable slings must be used.

Before lifting ensure the load is free and not restrained by fixing bolts etc.

Determine the loads weight and centre of gravity as accurately as possible.

Attach suitable slings to the load and attach to the cables hook ensuring the hook is not overcrowded and that the hooks gate closes correctly.

Use tag lines to control long or bulky loads.

The unit is supplied with a telescopic handle which is used for raising and lowering.

To lift, slide the handle over the operating lever, guiding the cut-out past the rivet then twist the handle to lock in place. Ensure the handle is locked, failure to do so could cause you serious personal injury if the handle slips during use.

To lift (or pull) crank the handle back and forth. The cable will be drawn in on each back stroke.

If the load is greater than the unit is designed for, the shear pin(s) in the operating handle will give way and render the unit inoperative.

If this happens, you will be able to lower the load safely but you must then contact your local HSS Hire for advice.

If lifting, lift the load a nominal distance to check balance and security of the load.

Raise the load for the minimum of time, try to lower the load as soon as possible. DO NOT leave the load suspended or unattended for any reason.

Know Your Symbols

HSS have created clear Icons to inform the hirer of their responsibilities towards the safe use of hire equipment.

These are designed to reduce the amount of different safety information labels required for each product for hire.

General use PPE / Warning

Clearly marked minimum PPE will be visible on all equipment,



Correct PPE must be worn



HAV Hand Arm Vibration



Danger Rotating blade



Danger Hot exhaust



Danger Electric shock



Caution Abrasive Wheel



Caution Finger trap

Fuel and Supply Types



Pe
Petrol



Di
Diesel



2t
2 - Stroke Petrol



EI
Electric

Safe Procedures

All hirers must understand and respect the safe procedures of all equipment.

It is the responsibility of the hirer to maintain and return the equipment in a clean condition and good working order.



Ro
Read OPS Guide



Ou
Outdoor Use only



HI
Heavy Lifting



Cd
Check Oil daily



Cf
Check Fuel daily



Cw
Check Water daily



Bc
Battery Care



Sh
Safe Height Working



Swl
Refer to Data Plate



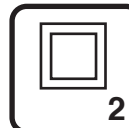
V
Check Power Voltage Data Plate

Electrical Safety

Safe wiring procedures.



Ea
Must be Earthed Class 1



Doi
Double Insulated Class 2



Enl
Earth Live Neutral Wire Coding

Return Responsibility

Charges apply to equipment returned dirty and damaged.



Cc
Cleaning Charge



Rc
Repair Charge