

Keep the equipment clean - you will find this less of a chore if you clean it regularly, rather than wait until the end of the hire period.

When not in use, **store the equipment somewhere clean, dry and safe** from thieves.

FINISHING OFF

If you have finished with the equipment completely, you should now empty it of any water/diesel (if being collected by an HSS vehicle, the driver will refuse to collect unless it has been emptied).

Clean the outside of the container as thoroughly as possible, ready for return to your local HSS Hire Shop.



...any comments?

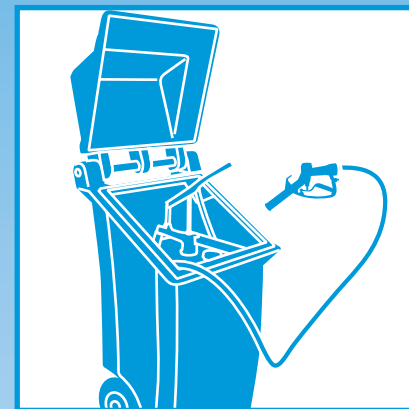
If you have any suggestions to enable us to improve the information within this guide please fax your comments or write to the Product Manager at the address below

Fax: 020 8687 5001

©HSS Hire Service Group Plc 2001 No. 454/01
Group Office: 25 Willow Lane, Mitcham, Surrey CR4 4TS

Web Site: <http://www.hss.co.uk>

HSS Hire Shops



Bunded Diesel Tank

An easily transportable, diesel storage unit for site and warehouse locations.



Code 60123

GENERAL SAFETY

For advice on the safety and suitability of this equipment contact your local HSS Hire Shop.



There is a serious risk of personal injury if you do not follow all instructions laid down in this guide.


The hirer has a responsibility to ensure that all necessary risk assessments have been completed prior to the use of this equipment.


This equipment should only be used by an operator who has been deemed competent to do so by his/her employer.

This equipment should be used by an able bodied, competent adult who has read and understood these instructions. Anyone with either a temporary or permanent disability, should seek expert advice before using it.

Keep children, animals and bystanders away from the work area. Cordon off a NO GO area using cones and either barriers or tape, available for hire from your local HSS Hire Shop.

  Never use this equipment if you are ill, feeling tired, or under the influence of alcohol or drugs.

 Safety goggles MUST be worn by everyone in the work area.

 Wear practical, protective clothing, fuel retardant gloves and footwear. Avoid loose garments and jewellery that could catch in moving parts, tie back long hair.

When filled with diesel, this equipment is heavy, never attempt to lift it.

Ensure the work area is well lit and ventilated, if in doubt, ask about lighting and ventilation equipment at your local HSS Hire Shop.

Fuel Safety

NEVER refuel any diesel engine powered equipment while the engine is hot or running.
Never smoke or allow naked lights into the area while refuelling.

Never inhale fuel vapour.

ALWAYS mop up any spillage as quickly as possible, and change your clothes if you get fuel on yourself.

ALWAYS site the diesel tank in a cool, safe place, well away from the work area.

Double check that all taps and filler caps are securely closed before leaving it unattended.

Choose a site for the equipment that keeps it well away from ignition sources or contaminants.

Check the condition of the equipment before use. If it shows signs of damage or excessive wear, return it to your local HSS Hire Shop.

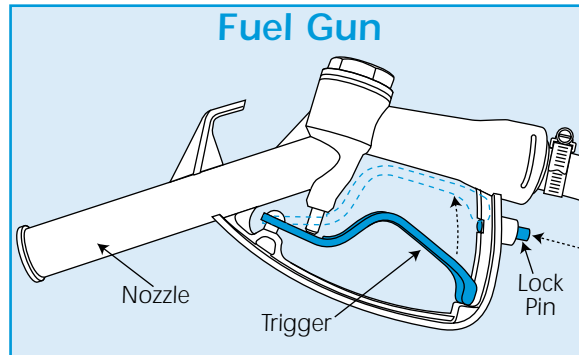
GETTING STARTED

You may only fill the diesel tank with clean diesel or DERV, if the diesel becomes contaminated, contact your local HSS Hire Shop for advise.

DO NOT use the diesel tank to supply any vehicle, which is to be used on the public highway. There may be traces of red die from previous users.

Take the diesel tank to the source of diesel, then unscrew and remove the filler cap, insert the supply hose (ensuring it is held securely) and begin filling.

Fill the diesel tank with a maximum of 100ltr then turn off the supply and re-fit the filler cap securely. Stand the unit on a firm, level surface strong enough to bear its weight. DO NOT park on slopes, soft ground or where there is a risk of subsidence.



To transfer diesel begin by removing the gun from its holster, place the nozzle into the container being filled and lock the trigger open.

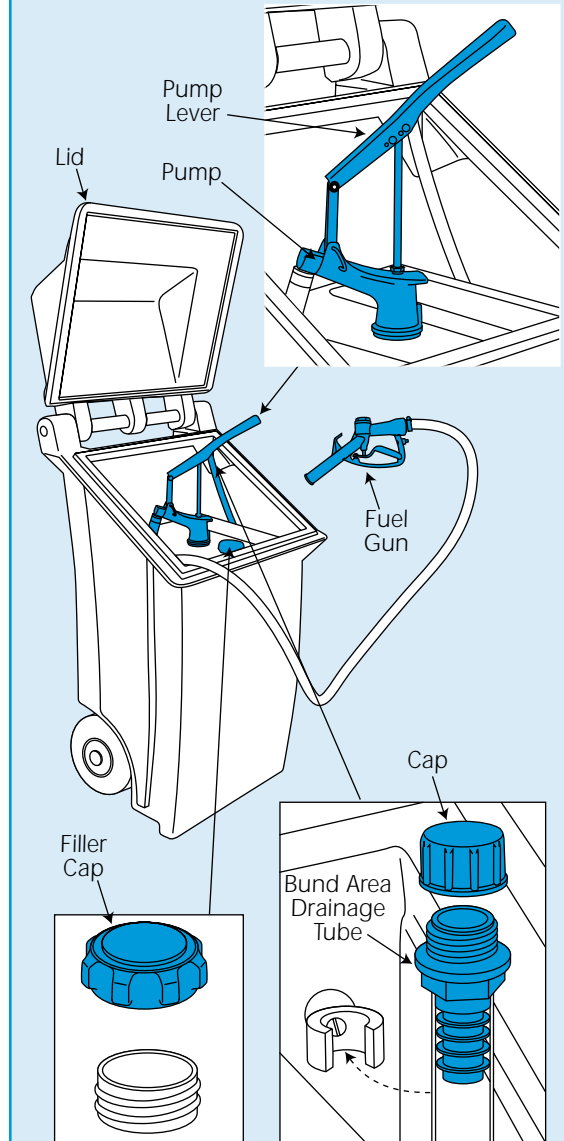
To lock the trigger open, squeeze the trigger, push the lock pin forward and release the trigger. To unlock, simply squeeze and release the trigger.

Now move the pump lever up and down until the required amount of diesel has been transferred.

Once complete, unlock the trigger and replace the gun in its holster.

The diesel tank is fitted with a drain off tube just inside the lid, for attachment to a suitable pump. If you wish to drain the bund area of spilt fuel, make sure that the diesel is discharged into a suitable container and NOT into a sewer or rain system.

Bunded Diesel Tank



EQUIPMENT CARE

Never push the equipment beyond its design limits. If it will not do what you want with reasonable ease and speed, assume you have the wrong tool for the job. Contact your local HSS Hire Shop for advice.